

**T5008D**  
**Sacramento North Trail**  
**Sacramento Ranger District**

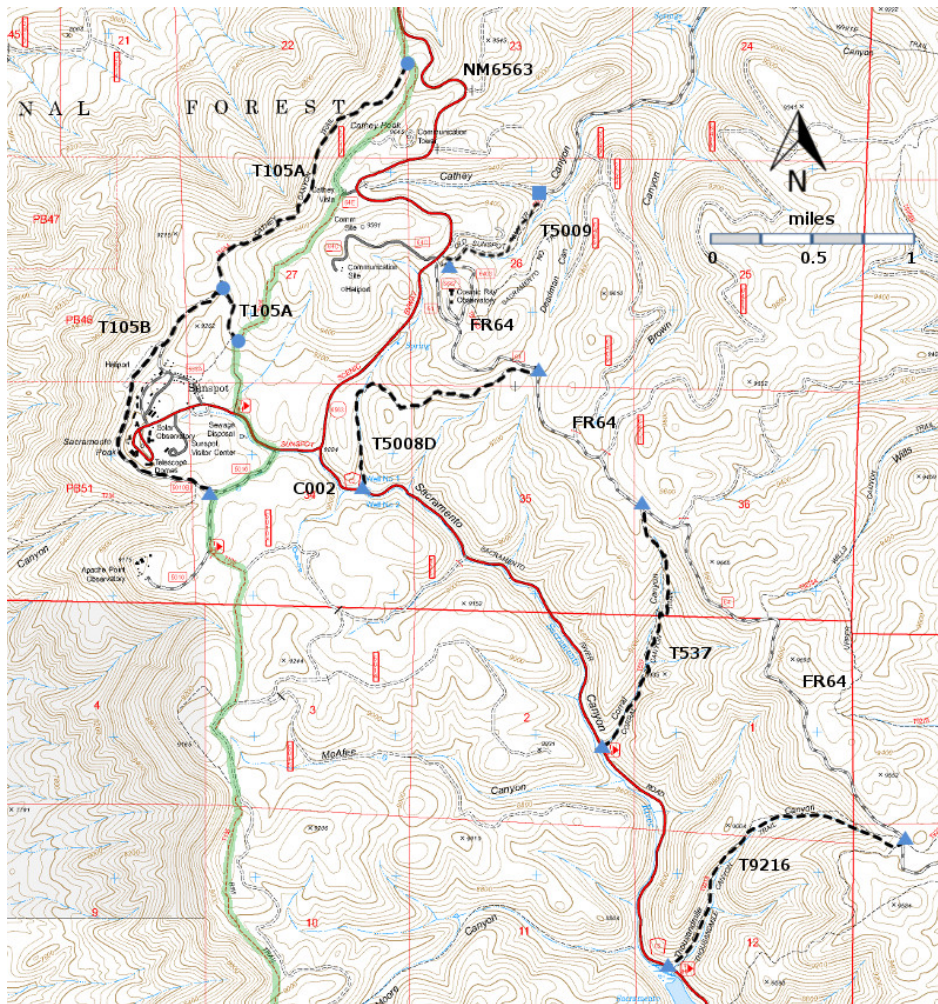


**T5008D**  
 GPS Track (as .GPX)

Left click to open in your browser; then save from browser.

LENGTH	ELEVATION	DIFFICULTY	SCENERY
1.5 miles	8920 - 9380 ft 460 ft difference	Easy	3

Allowed Usage				
✓	✓	✓	✓	✓



[Link to map color/symbol codes](#)

T105A, T105B, T537, T5008D, T5900, and T9216 are shown as black dashed lines on the map. T105 Rim Trail is shown as a green line.

**DESCRIPTION:** From either trailhead, T5008D makes an easy out-and-back walking trail for a family. Beginning at the lower terminus, the trail ascends a meadow at about 8% grade, past rock check dams. At mile 0.4, the somewhat dim path bends to the right up a side canyon. After progressing over a mild saddle, the path splits. Angle left and follow growing evidence of a 15 foot wide primitive timber road, with an abundance of Douglas-fir and southwestern white pine draped with Spanish moss. Maximum gradient is about 10%. Just beyond a large berm that blocks standard vehicles is a pleasant primitive campsite, within view of the upper trailhead at FR64

**ACCESS:** To reach the upper trailhead for T5008D, begin in Cloudcroft at the intersection of US82 and NM130. Drive NM130 south 1.8 miles to the junction with NM6563, Sunspot Highway. Turn right and follow the milepost 13. Go another 0.2 mile, angle left on FR64 and follow it 0.8 mile to the trailhead.

To access the lower trailhead, return to NM6563; turn left and drive to milepost 14. Drive another 0.2 mile to the Sunspot junction, the beginning of paved Sacramento Canyon Road (same as County C002 and FR537). Continue beyond this junction just 0.3 mile, to the unsigned trailhead at a power substation on the left. T5008D begins here and goes up canyon.

#### GPS Coordinates for Key Points

NAD83	Lat/Lon hddd mm ss.s	UTM (13 S)
Upper Trailhead	N32 47 34.5 W105 47 25.3	425994 3628606
Lower Trailhead	N32 47 05.9 W105 48 10.9	424803 3627733

#### Links to Other Resources

[Area Map](#)

[Sacramento Peak Topo Map](#)

Last Hiked: 2005

Updated 1/17/2016