

**T250**  
**Chippeway Trail**  
**Sacramento Ranger District**

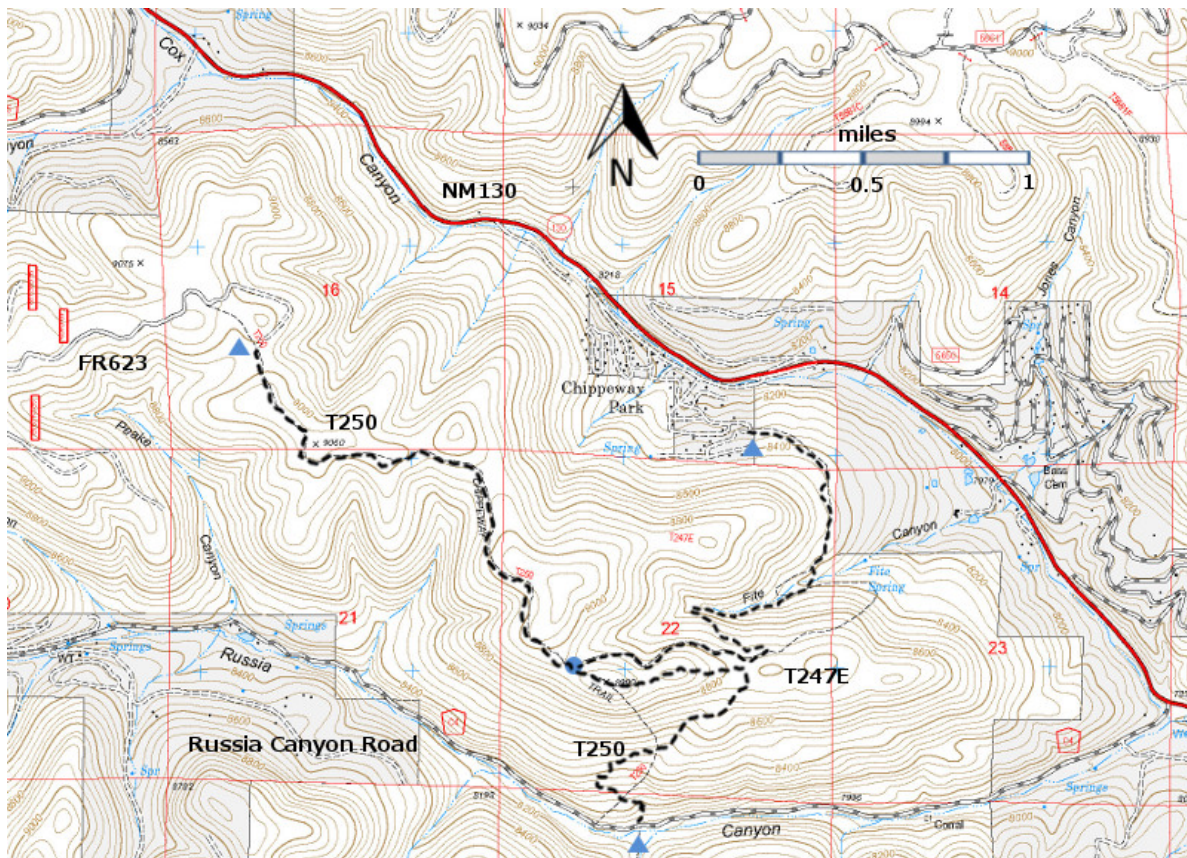


**T250**  
 GPS Track (as .GPX)

Left click to open in your browser; then save from browser.

LENGTH	ELEVATION	DIFFICULTY	SCENERY
3.2 miles	8080 - 9060 ft 980 ft difference	Moderate	2

Allowed Usage				



[Link to map color/symbol codes](#)

T247E and T250 are shown as black dashed lines on the map.

**DESCRIPTION:** From its upper end, T250 begins as a wide and easy-to-follow trail that threads along a ridge for 2.3 miles. A former timber road is used as a part of the trail for 0.7 mile. There are occasional filtered distant views. Abundant opportunities exist to explore other old timber routes. Beginning at mile 2.3, the trail becomes steeper, with average gradients of 30%, 50% maximum, as the trail switchbacks down the side of Russia Canyon to its lower trailhead. The path is easy to follow.

**ACCESS:** To reach the upper trailhead for T250, use a high clearance vehicle. Begin in Cloudcroft at the NM130 and US82 intersection and drive NM130 south 1.8 miles. Turn right on NM6563, Sunspot Highway; drive 4 miles to milepost 4. Go another 0.4 miles and turn left on County Road C004, also signed Russia Canyon Road. After crossing the cattle guard, follow FR 623 along Russia Ridge, straight ahead (or turn left as signed; both join in 0.1 mile). The route passes along the ridge between Russia and Cox Canyons. Drive 5.4 miles from NM6563 to a U-curve going left; the signed trailhead is on the right at the middle of the curve.

To reach the lower trailhead of T250, begin in Cloudcroft at the NM130 and US82 intersection and drive NM130 south 7 miles to milepost 7. Go another 0.5 mile, turn right on FR247, Russia Canyon Road, (same as County Road C004). Follow FR247 1.6 miles to the signed trailhead for T250 on the right, within view of a wooden Lucas Canyon sign on the left.

#### **GPS Coordinates for Key Points**

NAD83	Lat/Lon hddd mm ss.s	UTM (13 S)
Upper Trailhead	N32 54 42.5 W105 43 36.5	432037 3641745
Lower Trailhead	N32 53 22.1 W105 42 26.2	433845 3639256

#### **Links to Other Resources**

[Area Map](#)

[Cloudcroft Topo Map](#)

Last Hiked: April 13, 2014

Updated 1/17/2016