

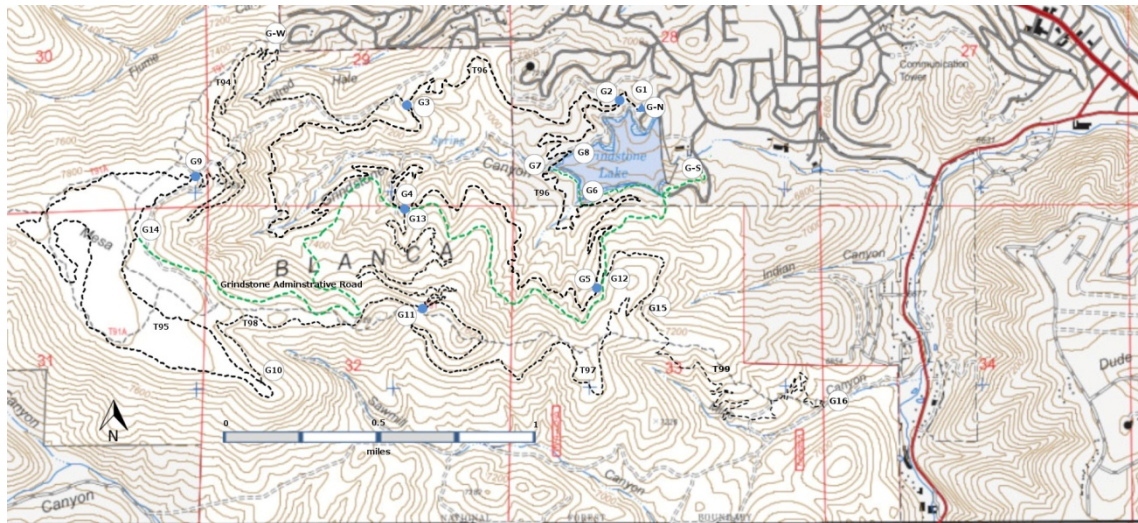
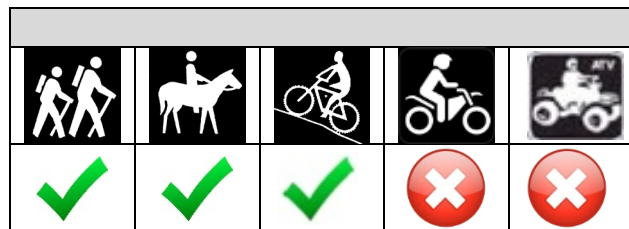
**T94**  
**Alfred Hale Connector Trail**  
**Smokey Bear Ranger District**



**T94**  
 GPS Track (as .GPX)

Left click to open in your browser; then save from browser.

LENGTH	ELEVATION	DIFFICULTY	SCENERY
2.7 miles	7160 - 7830 ft 670 ft difference	Moderate	3



[Link to map color/symbol codes](#)

T94, T95, T96, T97, T98, and T99 are shown as black dashed lines on the map. Descriptions of the locations – such as G3 -- are given in the GPS table near the end

To use the junction-to-junction paths given below, note, for example, that in traversing a trail such as T95 Grindstone Mesa Loop Trail, one goes from G9 to G14 to G10 to G9.)

- T94 Alfred Hale Connector Trail (G3 – G9)**
- T95 Grindstone Mesa Loop Trail (G9 – G14 – G10 – G9)**
- T96 Grindstone Trail (formerly Grindstone Lake Trail/Grindstone Canyon Trail)**  
 (G1 – G2 – G3 – G4 – G5 – G6 – G7 – G8 - G2 – G1)
- T97 Grindstone Ridge Trail (G6 – G12 – G11)**

**T98 North Grindstone Connector Trail (G4 – G13 – G11 – G10)**

**T99 Mine Ridge Trail (G16 – G15)**

**Fisherman's Trail (G-S – G6 – G7)**

**Grindstone Administrative Road (G-S – G12 – G13 – G14)**

**NOTE:** *The Trail Guide: Lincoln National Forest* (2002 edition) describes three trails in the Grindstone Mesa area: T91, T91A, and T91B. When the new trails were developed, with the intent to provide good trails for mountain biking, the new single path trails were built with little use of the old logging roads. In effect, the old trails were abandoned and new trails were built.

The six trails -- T94 Alfred Hale Connector Trail, T95 Grindstone Mesa Loop Trail, T96 Grindstone Trail, T97 Grindstone Ridge Trail, T98 North Grindstone Connector Trail, and T99 Mine Ridge Trail -- were developed by the Forest Service, the City of Ruidoso, the Ruidoso Ecoservants, and the Ruidoso area mountain biking community. One way to think of the trails in the Grindstone Area is that there are two major loops and multiple connectors between them. T96 Grindstone Trail is the lower loop, and T95 Grindstone Mesa Trail is the upper loop. The connectors are as follows: T94 Alfred Hale Connector Trail, Grindstone Administrative Road (closed to motorized vehicles), T97 Grindstone Ridge Trail (with part of T98), and T98 North Grindstone Connector Trail. The trail numbers are not listed on the trail signs. Be sure to remember the name(s) of the trail(s) you want to hike.

**DESCRIPTION:** If you want to get to the open Ponderosa forest on the top of Grindstone Mesa, or if you want to enjoy the scenic views of Ruidoso and the Inn of the Mountain Gods, then T94 is a fine trail for you. However, if you are a trail junkie, and you want to see what a well-designed and well-constructed mountain trail can be, then T94 is definitely for you. It was designed and laid out by the mountain biking community in Ruidoso and, with many switchbacks, has a 4% gradient from T96 to Westminster road and a 5% gradient from there to T96.

Listen to the lingo: "It is a sustainable armored trail with a 5% outslope." Let's break that down for you and me. "Sustainable" means that it was designed, laid out, and constructed well from the beginning so that it should not need a lot of hard-to-come-by maintenance. "Armored" means that, in places where a drainage crosses the trail, it has been paved with flat stones so that erosion is minimized. The "5% outslope" means that there is a small slope, across the trail, so that water runs off the trail where it enters rather than running down the trail. Water bars are not needed when the trail has a 5% outslope. For a nature lover or engineer – it is a wonderful trail.

**ACCESS:** There are three potential points of access for T94 Albert Hale Connector Trail: (1) the junction with T96 Grindstone Canyon Trail [G3], (2) Westminster Road [G-W], and (3) the junction with T95 Grindstone Mesa Trail [G9]. It is better to think of the third choice as a way to access T95.

Access by way of T96: In Ruidoso, go 1.3 miles south from the Smokey Bear Ranger District Office along Mechem Drive (NM48) to where it turns left at a traffic light. This is the intersection of Mechem and Sudderth Drive. Turn right and head west on Sudderth. At mile 0.2 from the traffic light, turn left at a complicated intersection onto Resort Drive. Follow the twists

and turns of Resort Drive 0.7 miles to the well-signed entrance to the Grindstone Lake recreation area. The signed trailhead for T96 is located in the upper parking area [G-N], just to the left of the hiker kiosk [G1]. Follow T96 for 1.3 miles to its signed junction with T94 [G3].

Access by way of Westminster Road: In Ruidoso go 1.3 miles south from the Smokey Bear Ranger District Office along Mechem Drive (NM48) to where it turns left at a traffic light. This is the intersection of Mechem and Sudderth Drive. *Zero your trip odometer here.* Turn right and head west on Sudderth. At mile 0.2 from the traffic light, turn right at a complicated intersection on Main Road, within sight of a 1<sup>st</sup> National Bank office. At mile 0.5, proceed straight ahead on Flume Canyon Drive. At mile 0.7, angle slightly left and continue following Flume Canyon Drive.

At mile 0.8, enter the Black Forest subdivision. Just beyond the imposing entrance to the subdivision, angle slightly right and follow pavement uphill. At mile 1.4, turn left on signed King Richard Drive, a steep, graveled road. At mile 1.8, turn right on Westbury Drive. At mile 2.0, turn left on Westminster Road and follow it for 0.2 mile, 100 feet beyond the top of the hill, to a graveled saddle, just beyond Lancelot Court. Look before you go off the pavement – the mud can be slippery! Park here [G-W]. It is tempting to hike up the old road beyond the closed Forest Service gate. However the unsigned single path access to T94 begins just to the left of the gate. The unsigned junction with T94 is about 100 feet down this trail. Continuing straight leads downhill (0.9 miles) to a junction with T96 [G3]. Turning right leads uphill (1.8 miles, elevation gain 480 feet), through multiple switchbacks to a junction with T95 at its eastern end [G9].

### **Links to Other Resources**

[Ruidoso Area Trails Map](#)  
[Forest Service Resource](#)

Last Hiked: November 2014

2/2/2023

### GPS Coordinates for Key Points

NAD83	Description	Lat/Lon hddd mm ss.s	UTM 13 S	Elevation (ft)
G-N	Vehicle parking, access to North side of Grindstone Lake	N33 19 24.8 W105 41 04.8	436279 3687373	6920
G-S	Vehicle parking, access to South side of Grindstone Lake	N33 19 17.8 W105 40 53.9	436555 3687148	6800
G-W	Vehicle parking, access to T94 from Westminster Road	N33 19 35.3 W105 41 42.1	434408 3687761	7160
G1	T96 Trailhead	N33 19 26.1 W105 41 05.1	436267 3687406	6920
G2	Start of T96 loop	N33 19 28.5 W105 41 09.2	436162 3687482	6960
G3	Junction T94 and T96	N33 19 25.5 W105 41 50.0	435106 3687395	7240
G4	Junction T96 and T98	N33 19 10.1 W105 41 50.7	435085 3686920	7160
G5	Junction T96 and T97	N33 18 57.1 W105 41 13.7	436040 3686514	7180
G6	Junction T96 and Fisherman's Trail (E)	N33 19 10.8 W105 41 16.6	435967 3686938	6900
G7	Junction T6 and Fisherman's Trail (W)	N33 19 16.1 W105 41 23.5	435790 3687102	6920
G8	Junction T96 and shore road	N33 19 19.7 W105 41 19.1	435905 3687211	6940
G9	Junction T94 and T95	N33 19 15.2 W105 42 33.4	433984 3687086	7800
G10	Junction T95 and T98	N33 18 40.9 W105 42 19.3	434344 3686027	7780
G11	Junction T97 and T98	N33 18 53.4 W105 41 47.4	435166 3686408	7580
G12	Junction T97 and Grindstone Administrative Road	N33 18 58.6 W105 41 12.2	436079 3686559	7220
G13	Junction T98 and Grindstone Administrative Road	N33 19 10.1 W105 41 50.7	435085 3686920	7160
G14	Junction T95 and Grindstone Administrative Road	N33 19 04.8 W105 42 44.5	433694 3686768	7840
G15	Junction of T97 and T99	N33 18 53.6 W105 41 06.3	436229 3686407	7267
G16	T99 Trailhead	N33 18 39.2 W105 40 25.6	437279 3685955	6794