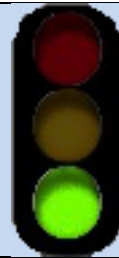


# T93

## Perk Canyon Trail

### Smokey Bear Ranger District



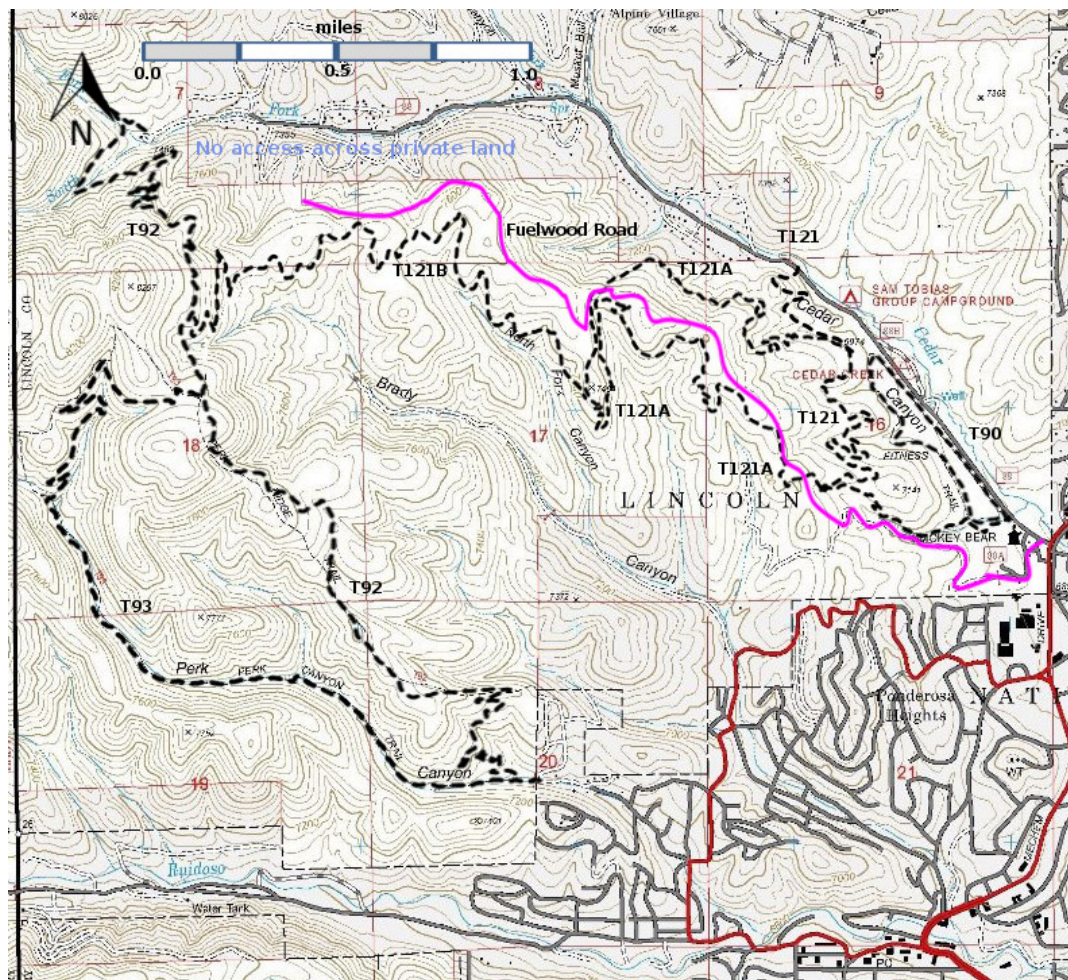
### T93

GPS Track (as .GPX)

Left click to open in your browser; then save from browser.

LENGTH	ELEVATION	DIFFICULTY	SCENERY
3.1 miles	7040-8014 ft 974 ft difference	Moderate	3

✓	✓	✓	✗	✗



[Link to map color/symbol codes](#)

T90, T92, T93, T121, T121A, and T121B are shown as black dashed lines on the map.

**DESCRIPTION:** The western end of T93 has recently been rerouted. It now includes switchbacks and a gentler gradient for cyclist. Hikers may want to revisit T93 to enjoy the improved trail. From its southeastern trailhead, T93 initially follows the bottom of Perk Canyon. The trail crisscrosses a small stream and, in a small glen with maples, there is a waterfall [18" high – but this is New Mexico – take what you can get!]. The trail threads through a mostly mixed conifer and oak corridor and climbs out of the canyon bottom via newly constructed switchbacks to join T92 near its high point.

A very nice 5.6 miles loop hike consists of starting at the lower T93 trailhead and returning to the lower T93 trailhead by taking T92 Perk Ridge Trail east to its lower junction with T93. The altitude gain is 1060 feet.

Hikers who want a gentle, pleasant hike may wish to hike up Perk Canyon and return by the same path. The gradient averages about 4% all the way to the glen with maples at mile 1.9.

**ACCESS:** The upper trail end cannot be reached by car. Access the north trailhead for T92, and hike 2.2 miles south to the junction of T92 and T93.

To access the lower trailhead, in Ruidoso, go 1.3 miles south from Smokey Bear Ranger District Office along New Mexico NM48 to where it turns left at a traffic light. This is the intersection of Mechem and Sudderth Drive. *Zero your trip odometer here. Turn right* and head west on Sudderth. At mile 0.2 from the traffic light, turn right at a complicated intersection on unsigned Main Road, within view of a 1st National Bank office. At mile 0.5, continue following Main Road as it angles right. At mile 0.7, at the Story Book Cabins sign, turn right on signed, paved Ebarb Drive. At mile 1.0, turn left on signed paved Perk Canyon Drive. At mile 1.5, the road and pavement ends, and there is modest parking and the carsonite sign for T93.

#### GPS Coordinates for Key Points

NAD83	Lat/Lon hddd mm ss.s	UTM (13 S)
Trailhead-Southeast	N33 20 27.6 W105 42 01.6	434821 3689311
Trailhead-Northwest Junction of T93 and T92	N33 21 24.2 W105 43 01.7	433277 3691063

Last Hiked: 10/13/2018

1/19/2019