

# T92

## Perk Ridge Trail

### Smokey Bear Ranger District



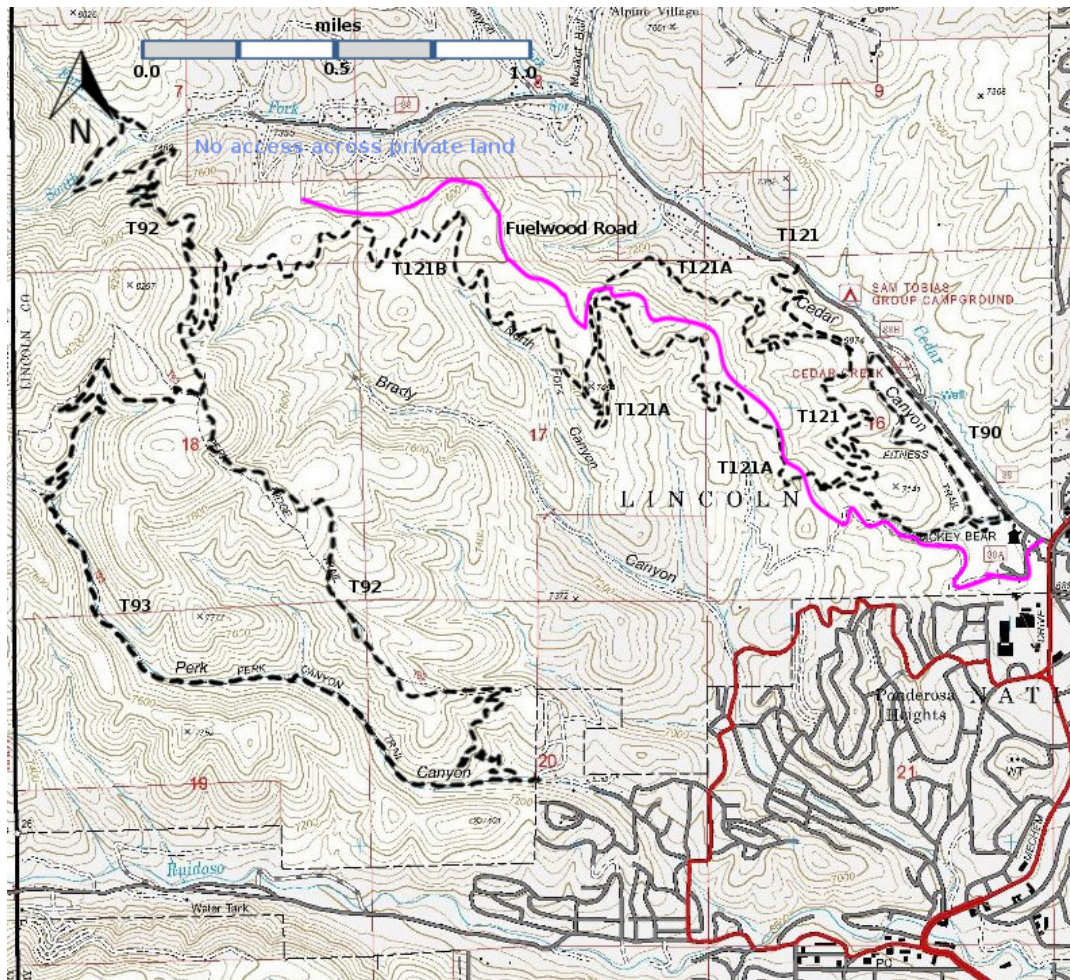
### T92

GPS Track (as .GPX)

Left click to open in your browser; then save from browser.

LENGTH	ELEVATION	DIFFICULTY	SCENERY
4.6 miles	7040-8100 ft 1060 ft difference	Moderate	2

✓	✓	✓	✓	✗



[Link to map color/symbol codes](#)

T90, T92, T93, T121, T121A, and T121B are shown as black dashed lines on the map.

### DESCRIPTION:

T92 has recently been rerouted to avoid private property. As a result both trailheads can now be accessed by car. Hikers will want to revisit this trail to enjoy the new version, which incorporates many switchbacks to provide a lower gradient for cyclists. However, the middle portion still makes use of the “straight up the ridge” trail.

From the north trailhead, T121B and T793 branch off at 1.90 miles and 2.2 miles, respectively. The north and south trailheads are at 7480 feet and 7080 feet, respectively. The maximum elevation is 8100 feet.

T92 passes through ponderosa and fir forests as well as scattered open areas and small meadows. Distant vistas are sparse and usually filtered.

### ACCESS:

To access the south trailhead, in Ruidoso, go 1.3 miles south from Smokey Bear Ranger District office along New Mexico NM48 to where it turns left at a traffic light. This is the intersection of Mechem and Sudderth Drive. *Zero your trip odometer here. Turn right* and head west on Sudderth. At mile 0.2 from the traffic light, turn right at a complicated intersection on unsigned Main Road, within view of a 1st National Bank office. At mile 0.5, continue following Main Road as it angles right. At mile 0.7, at the Story Book Cabins sign, turn right on signed, paved Ebarb Drive. At mile 1.0, turn left on signed paved Perk Canyon Drive. At mile 1.5, the road and pavement ends, and there is modest parking and the carsonite sign for T93. Hike approximately 100 feet along T93 to its junction with T92.

To access the north trailhead, start at the junction of Mechem Drive (NM48) and Cedar Creek Drive (near Smokey Bear Ranger District office) and drive 3.2 miles along Cedar Creek Drive to its end at a small parking area. There is an old two track road leading up the grassy canyon. Do not hike this road, but rather turn right just past a 3 foot high concrete structure.

### GPS Coordinates for Key Points

NAD83	Lat/Lon hddd mm ss.s	UTM (13 S)
Trailhead-South	N33 20 27.4 W105 42 02.6	434795 3689303
Junction of T93 and T92	N33 21 24.2 W105 43 01.7	433277 3691063
Junction of T92 and T121B	N33 21 38.2 W105 43 03.6	433233 3691494
Trailhead-North	N33 22 02.8 W105 43 12.8	432999 3692255

Last Hiked: 10/13/2018

1/14/2019