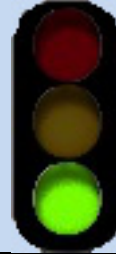


T81

Sand Wash Trail

Smokey Bear Ranger District



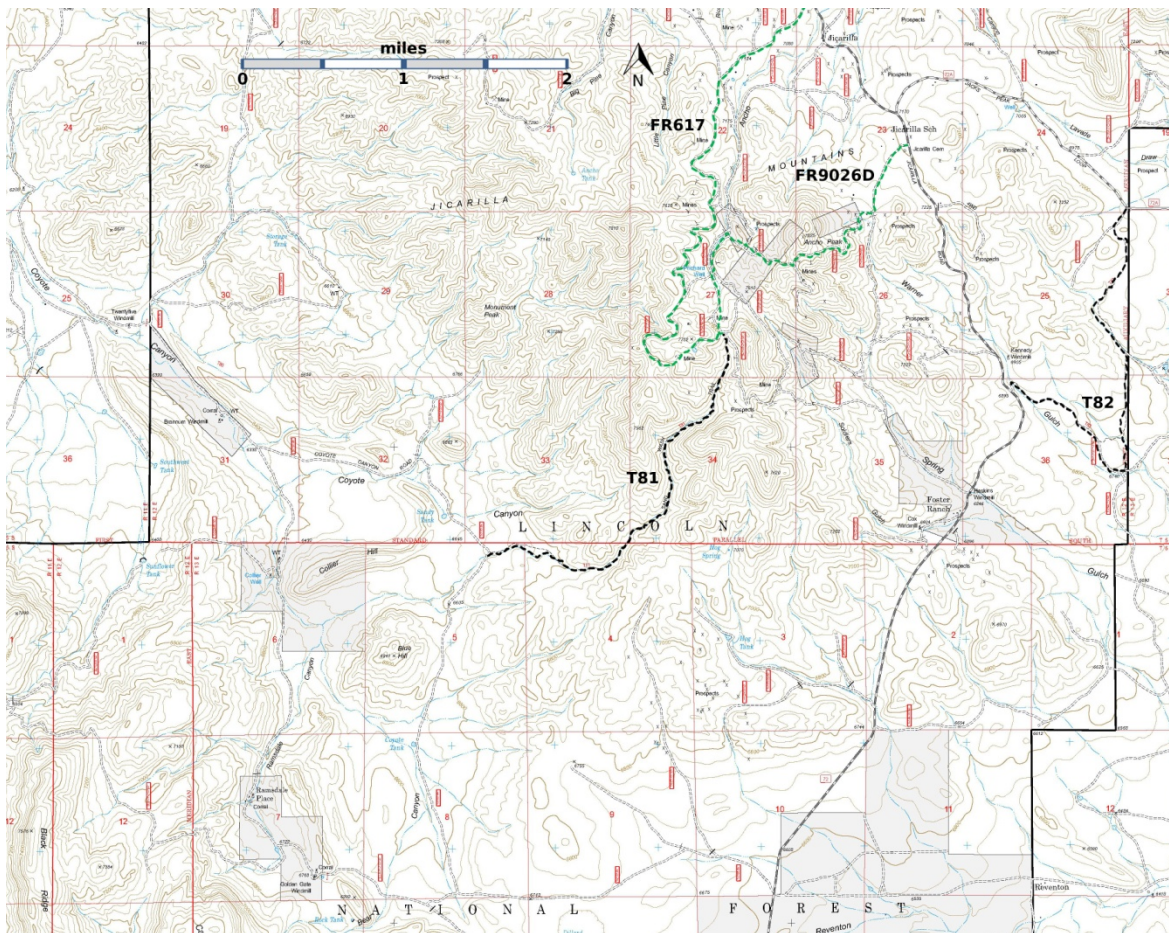
T81

GPS Track (as .GPX)

Left click to open in your browser; then save from browser.

LENGTH	ELEVATION	DIFFICULTY	SCENERY
2.5 miles	6680 7560 ft 880 ft difference	Moderate	1

✓	✓	✓	✓	✓



[Link to map color/symbol codes](#)

T81 and T82 are shown as black dashed lines on the map. Yellow over a trail indicates that that portion of the trail is intermittent or hard to follow. The map image may be downloaded through the White Mountain Wilderness link below. The image can then be expanded and/or manipulated at high resolution.

DESCRIPTION: T81 runs near the bottom of Sand Wash, with an average gradient of 7%. It is easy to hike with only a few step overs/step unders. The upper portion has many beautiful trees.

ACCESS:

CAUTION: The roads north of the junction of FR72 and FR139 (Patos Road) can be (squishy, sticky) muddy when wet. Do this hike when the roads are dry. Also, T81 is in the bottom of Sand Wash. Watch for thunderstorms and take cautions to avoid flash floods.

To reach the south trailhead, start at the intersection of US54 and US380 in Carrizozo, and drive 3.3 miles north on US54 to paved County Road 349. Follow Co349 for 8.5 miles to the old mining town of White Oaks. The road continues as FR72, a well-maintained gravel road. Follow FR72 for 5.4 miles to FR483. Turn left on FR483, a dirt road, and follow it, opening and closing gates as necessary. After 2.1 miles FR483 turns right. Drive 1.8 miles further, STOP and park just before a very steep draw. Hike 0.3 miles to the next draw, Sand Wash. The carsonite T82 sign is 0.1 miles further, broken and lying forlornly at the edge of a grassy area, with no sign of trail tread.

There are at least two ways to reach the north trailhead:

1. Follow the instructions above, but do not turn off of FR72 at its junction with FR433. Proceed 5.2 miles further along FR72 and turn left and park at FR9026D (Jicarilla Cemetery) . [The historic Jicarilla school house is just 0.1 mile further along FR72.] This is the start of a 2.5 mile hike to the T81 trailhead. The wash that is visible at this point is actually the badly eroded FR9026D. Follow the old roads over a ridge with fine distant views, and down into a canyon with the solar/electric Prichard “windmill”, past the windmill and follow roads up to the T81 trailhead. This route is shown as a green dashed line on the map. Remember: T81 is a trail, not a road. The carsonsite sign is lying on the ground. Hike past it and down into Sand Wash. It is strongly advised that hikers download the gpx track FR9026D-T81.gpx and use it as a guide.
2. Follow the instructions above, but do not turn off of FR72 at its junction with FR433. Proceed 6.3 miles further along FR72 and turn left onto FR617. Drive 3.4 miles along FR617 (good road with some very nice views) to an open area. Park here --- this is the end of the good road. The next 0.1 mile of road is steep and rocky. Hike up it to a road fork. Take the left fork and hike 0.1 miles on a road that is not only steep and rocky but also has loose dirt and deep ruts. The T81 trailhead is 0.4 miles from the open space where you (should have) parked your vehicle. This route is shown as a green dashed line on the map. It is strongly advised that hikers download the gpx track FR617-T81.gpx and use it as a guide.

GPS Coordinates for Key Points

NAD83	Lat/Lon hddd mm ss.s	UTM (13 S)
North Trailhead	N33 50 35.0 W105 40 24.2	437699 3744959
South Trailhead	N33 49 26.9 W105 41 54.0	435376 3742877

Links to Other Resources

[Jicarilla/Carrizo Area Map-p3 \(5 MB\)](#)

[White Oaks North Topo Map](#)

[FR9026D-T81.gpx](#)

[FR617-T81.gpx](#)

Last Hiked: 4/9/2016

2/6/2016