

# T77

## North Eagle Creek Trail

### Smokey Bear Ranger District

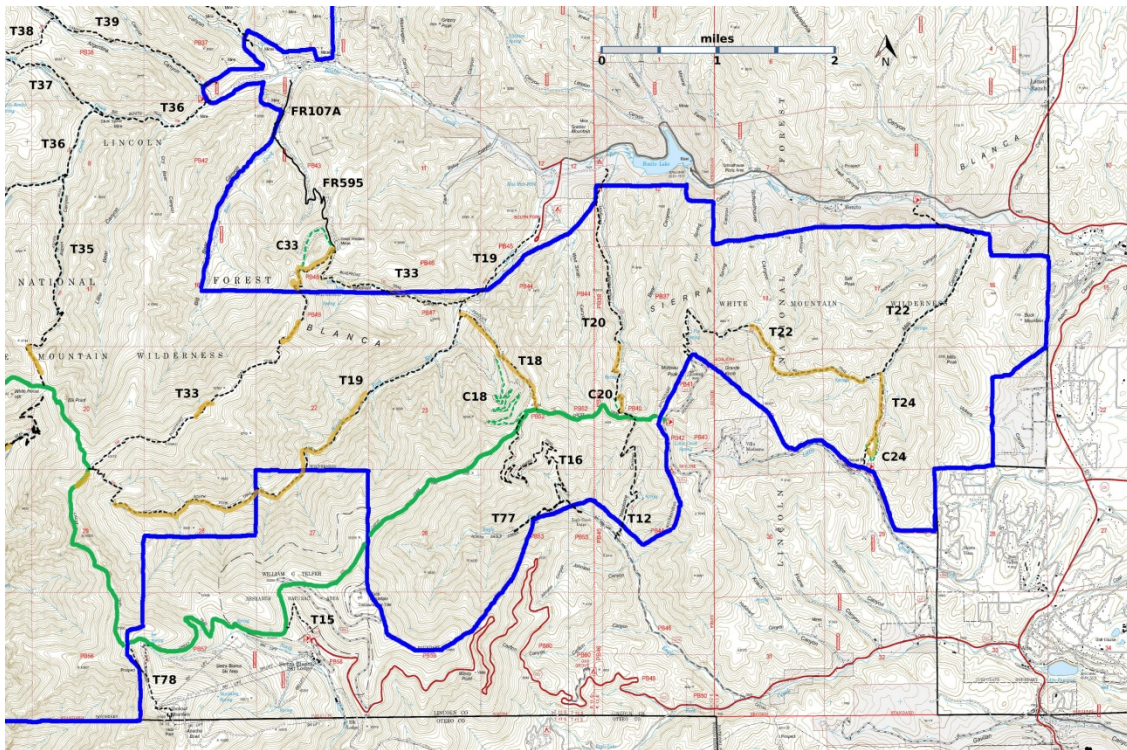
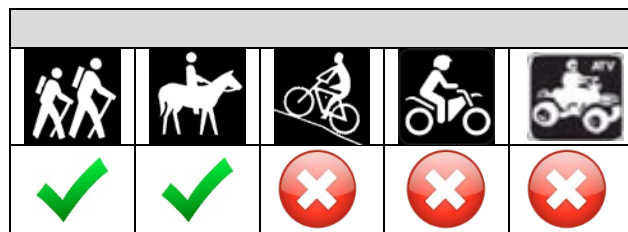


**T77**  
GPS Track (as .GPX)

Left click to open in your browser; then save from browser.

**T77 is now open.**

LENGTH	ELEVATION	DIFFICULTY	SCENERY
0.8 miles See Text	8110 - 8340 ft 230 ft difference	Easy	3



[Link to map color/symbol codes](#)

T12, T15, T16, T18, T19, T20, T20, T24, T33, T35, T36 (partial), T37 (partial), T38, T39 (partial), T77, and T78 are shown as black dashed lines on the map. The solid blue line is the border of the White Mountain Wilderness. The solid green line is T25 Crest Trail. Yellow over a trail indicates that that portion of the trail is intermittent or hard to follow. The map image may

be downloaded through the White Mountain Wilderness link below. The image can then be expanded and/or manipulated at high resolution.

Only highest part of the canyon burned. The canyon bottom is still green and pretty.

**DESCRIPTION:** T77 is a nice out-and-back picnic hike. From the trailhead, follow the path along Eagle Creek to the crossing. Turn left to continue up the creek. A right turn will take you up T16 Miner's Road Trail.

Good news! The Smokey Bear Volunteer Trail Crew cleared this trail. The numerous fallen trees across the trail have been removed, and you will have a nice clear trail. When you reach the three foot high cairn, stop and enjoy the scene – the green of the trees, the sound of the water in the creek, the breeze, the birds and flowers, your lunch. Remind yourself that nice hikers built the cairn to warn you not to go further. The fallen trees are bigger, the terrain is steeper, and the path is harder to find. Return home in good health and in good cheer!

**ACCESS:** To access the lower end of T77 from Smokey Bear Ranger District Office in Ruidoso, drive NM48 north 4.2 miles to the junction of NM532, Ski Run Highway. Turn left and follow paved NM532 for 2.5 miles to the junction of Forest Road FR127A, Eagle Creek Road. Turn right and drive the largely graveled and narrow FR127 for 1.4 miles to the locked gate to the Eagle Creek area. Park and hike 0.8 miles to the trailhead. When you reach Eagle Creek Lodge, cross the concrete bridge and continue up the road. The trailhead is just past the last cabin on the left.

#### GPS Coordinates for Key Points

NAD83	Lat/Lon hddd mm ss.s	UTM (13 S)
Lower Trailhead	N33 24 51.8 W105 44 46.9	430606 3697475
Trail End	N33 24 45.9 W105 45 29.3	429509 3697303

#### Links to Other Resources

[White Mountain Wilderness Trails-p1 \(11 MB\)](#)

[Burned Trails Map \(34 MB\)](#)

[WMW Forest Service Resource](#)

Last Hiked: 7/22/2017

2/7/2021