

T74

Johnnie Canyon Trail

Smokey Bear Ranger District

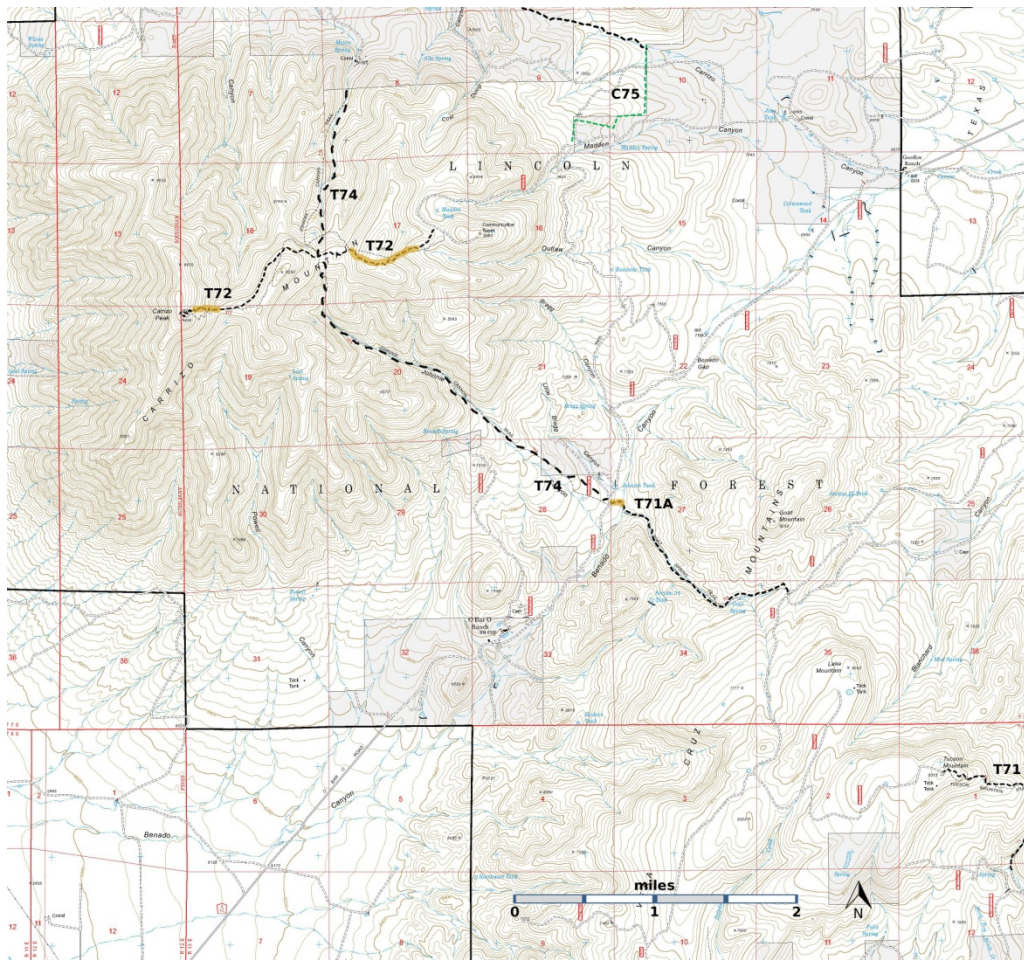
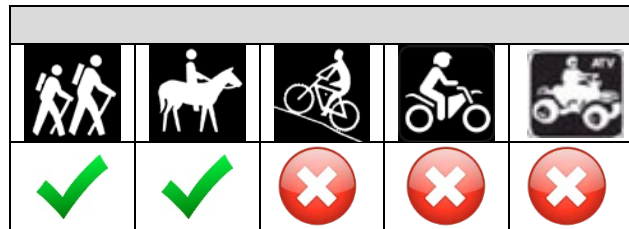


T74

GPS Track (as .GPX)

Left click to open in your browser; then save from browser.

LENGTH	ELEVATION	DIFFICULTY	SCENERY
4.3 miles	6900 - 8800 ft 1700 ft difference	Difficult	2



[Link to map color/symbol codes](#)

T71, T71A, T72, T74, and T75 (partial) are shown as black dashed lines on the map. Yellow over a trail indicates that that portion of the trail is intermittent or hard to follow. The map image may be downloaded through the White Mountain Wilderness link below. The image can then be expanded and/or manipulated at high resolution.

CAUTION: The segment of T74 north of its intersection with T72 is shown incorrectly on many Forest Service maps. This segment generally follows the bottom of the canyon.

NOTE: If T74 is used to reach Carrizo Peak, it is 4.4 miles one way, including 1.4 miles along a portion of T72, Carrizo Peak Trail. It is only 2.5 miles if Carrizo Peak is accessed directly from the T72 trailhead near the upper end of FR441, Carrizo Mountain Road. In other words, it is nearly four extra miles round trip, if Carrizo Peak is reached by hiking T74, in contrast to hiking all of T72. However, the longer mileage route requires just a high clearance vehicle to access the T74 southeastern trailhead, *whereas a 4-wheel drive, high clearance vehicle is mandatory to follow FR 441 to the T72 trailhead!*

DESCRIPTION: T74 connects FR441 on the southeast side of Carrizo Mountain with private property on its northwest slope. Typical gradients along the first 2.6 miles range up to 20%. Grades may increase to 40% from mile 2.6 to the T72 junction at mile 3.0 on a beautiful high saddle. Along this section, T74 has few open areas, one small spring next to the trail at mile 2.2, and limited grass in the forest understory.

In contrast, along the 1.4 miles of T74 northwest of the saddle crossing, there are more springs, abundant meadows, and much grass in the forest understory. The trail sometimes disappears in the open areas, but reappears as it enters wooded sections. Grades range up to 40%. The largely primitive path ends at a signed trailhead on a private boundary.

A hike of T74 -- out and back --- breaks down into a 3mile hike with a 2000 foot rise, a 1.4 miles hike with a 1000 foot descent, and the reverse of the first two segments.

ACCESS: to access the southeastern trailhead of T74, begin in Carrizozo at the US380 and US54 intersection. Drive US380 east 8.7 miles to the turnoff for signed County Road A010, also signed FR441. Turn left and pass through a metal archway. At mile 4.9 from US380, angle right at the O Bar O headquarters area. AT mile 5.3, drive through the gate (leaving it open/closed as you find it), and proceed to mile 6.4 over rough road to the signed trailhead on the left. There is no public access to the T74 trailhead on the northwestern side of Carrizo Peak, near White Oaks.

GPS Coordinates for Key Points

NAD83	Lat/Lon hddd mm ss.s	UTM (13 S)
North End of T74	N33 42 48.7 W105 42 29.1	434390 3730618
Junction of T72 and T74	N33 41 51.4 W105 42 50.0	433841 3728858
Trailhead	N33 40 16.9 W105 40 35.1	437295 3725924

Links to Other Resources

[Jicarilla/Carrizo Area Map-p1B \(5MB\)](#)

[White Oaks South Topo Map](#)

Last Hiked: 4/8/2017

1/9/2018