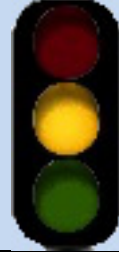


T73

Trail Canyon Trail

Smokey Bear Ranger District

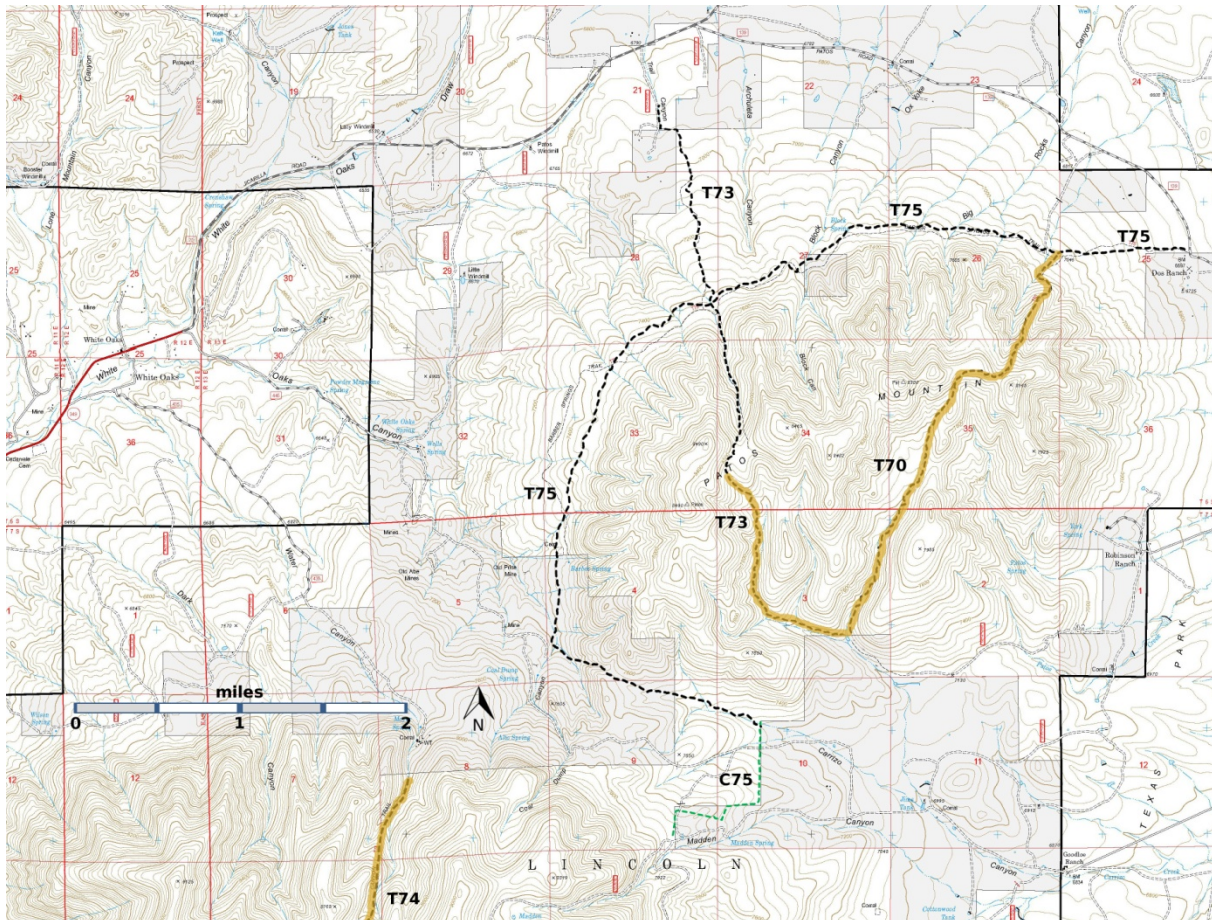


T73

GPS Track (as .GPX)

Left click to open in your browser; then save from browser.

LENGTH	ELEVATION	DIFFICULTY	SCENERY
4.4 miles	6920 - 8160 ft 1240 ft difference	Difficult	2



[Link to map color/symbol codes](#)

T70, T73, T74 (partial) , and T75 are shown as black dashed lines on the map. Yellow over a trail indicates that that portion of the trail is intermittent or hard to follow. The map image may be downloaded through the White Mountain Wilderness link below. The image can then be expanded and/or manipulated at high resolution.

NOTE: In 2002 when John Stockert wrote the description of T73 in the following paragraphs, T73 began at its junction with T75 and ascended to the saddle. Currently, T73 begins 1.3 miles north of its junction with T75 and extends 2.5 miles south of that junction (1.6 miles past the saddle).

DESCRIPTION: T73 is the only trail of the three trails (T70, T73, and T75) not affected by the 1994 Patos Mountain Fire. It begins as an eroded road, becomes a lovely single path to the saddle, and beyond the saddle is a lovely hike with no tread. The distance from the parking point to the junction of T73 and T75 is 1.4 miles. From that junction to the saddle, there is a 1.0 mile hike along a lovely easily followed single path, though large trees and across meadows. From the saddle on, the path shown on Forest Service maps leads down a steep brushy drainage. A much better path is to continue straight across the saddle, following a modest tread and work along the ridge to the drainage. There is no tread on the ridge, and the way is steep and sometimes rocky. Once you descend into the lovely forested drainage, stay on the west side. The cross slope is much less than that on the east side. Continue until you reach the barbed wire fence that marks the boundary of private property. If you work to the south and west along the fence, you will reach the south trailhead for T75.

ACCESS: In an area with many bad roads, access to the north trailhead of T73 is surprisingly easy. From the intersection of US54 and US380 in Carrizozo, drive 3.3 miles north on US54 to paved County Road 349. Follow Co349 for 8.5 miles to the old mining town of White Oaks. The road continues as FR72, a well-maintained gravel road. Follow FR72 for 3.6 miles to the intersection with FR9813 on the right. Leave the gate open or closed, as you find it. Follow FR9813 for 0.4 miles to the designated parking area. Hike 0.1 miles to the unsigned T73 trailhead at the left most of the three gates/roads.

GPS Coordinates for Key Points

NAD83	Lat/Lon hddd mm ss.s	UTM (13 S)
North Trailhead	N33 46 07.7 W105 40 56.6	436811 3736732
Junction of T73 and T75	N33 45 12.8 W105 40 35.3	437349 3735036
Junction of T70 and T73	N33 43 29.7 W105 39 45.2	438618 3731852

Links to Other Resources

[Jicarilla/Carrizo Area Map-p2 \(6 MB\)](#)

[White Oaks South Topo Map](#)

[White Oaks North Topo Map](#)

Last Hiked: 3/14/2016

2/6/2017