

# T72

## Carrizo Peak Trail

### Smokey Bear Ranger District

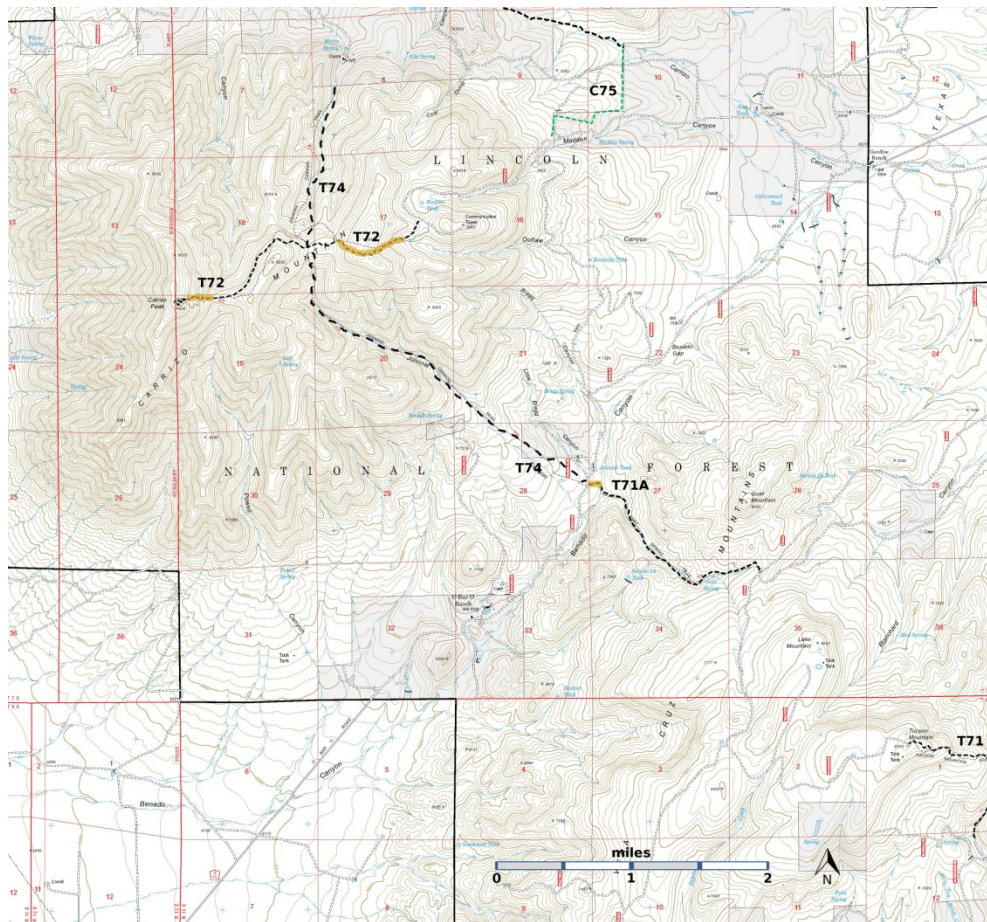
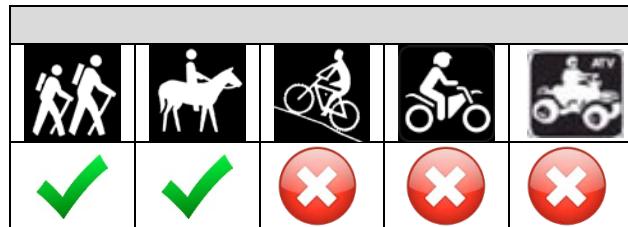


### T72

GPS Track (as .GPX)

Left click to open in your browser; then save from browser.

LENGTH	ELEVATION	DIFFICULTY	SCENERY
2.5 miles	8720 - 9600 ft 880 ft difference	Moderate	4



[Link to map color/symbol codes](#)

T71, T71A, T72, T74, and T75 (partial) are shown as black dashed lines on the map. Yellow over a trail indicates that that portion of the trail is intermittent or hard to follow. The map image may be downloaded through the White Mountain Wilderness link below. The image can then be expanded and/or manipulated at high resolution

Caution: The section of T72 is between its eastern trailhead and its intersection with T74 shown incorrectly on many Forest Service maps.

**NOTE:** If T74 is used to reach Carrizo Peak, it is 4.4 miles one way, including 1.4 miles along a portion of T72, Carrizo Peak Trail. It is only 2.5 miles if Carrizo Peak is accessed directly from the T72 trailhead near the upper end of FR441, Carrizo Mountain Road. In other words, it is nearly four extra miles round trip, if Carrizo Peak is reached by hiking T74, in contrast to hiking all of T72. However, the longer mileage route requires just a high clearance vehicle to access the T74 southeastern trailhead, *whereas a 4-wheel drive, high clearance vehicle is mandatory to follow FR 441 to the T72 trailhead!*

**DESCRIPTION:** T72 involves frequent gradients of 30% to 50% with many switchbacks, especially near its end on Carrizo Peak. It passes around the upper part of Outlaw Canyon and crosses two major saddles on Carrizo Mountain. For those who successfully hike T72 to Carrizo Peak, the inspiring summit of Carrizo Mountain, a glorious, 200 degree, sweeping vista meets the eye. In addition, scattered ridges around the highest point provide acres of meadow and forest to explore.

The first 1.1 miles of T72 (between FR 441 and the T74 intersection) is a primitive track and sometimes unclear, except for the cairns and trail blazes that delineate the route. Look to the right when the meadow at Outlaw Canyon is reached, and again look to the right when the first saddle is reached. Between the T74 intersection and Carrizo Peak, a well-constructed trail exists much of the way (with many downed trees) . It threads through several small meadows, oak thickets and stands of young Douglas-fir, Ponderosa pine, and spruce, and into a magnificent virgin forest. Due to frequent steep grades, hiking very slowly along parts of the trail is paramount, if the hike is to be enjoyed.

Hikers are advised to download the [gpx tract for T72](#) and use it as a guide.

**ACCESS:** To access the eastern trailhead of T72, begin in Carrizozo at the US380 and US54 intersection. Drive US380 east 8.7 miles to the turnoff for signed County Road A010, also signed FR441. Turn left and pass through a metal archway. At mile 4.9 from US380, angle right at the O Bar O Headquarters area. At mile 5.3, drive through the gate (leaving it open/closed as you find it), and proceed to mile 12.4 from US380 over rough road. This includes, beginning at mile 10.8, a 1.0 mile drive along a steep rocky road. with a drop-off on the left, that requires 4WD. *This may be scary for both driver and passengers. [Note from Lynn Melton: This road is difficult on the descent also; keep your speed down.]* Just beyond is a beautiful, pastoral, and impressive old volcanic crater, worth the drive just to see this exquisite area. The T72 access is signed on the

right, just 0.3 mile before FR 441 ends at Madden Peak Electronic Site. The new carsonite sign says “T74” rather than the correct T72. The older wooden sign gives correct information.

### **GPS Coordinates for Key Points**

NAD83	Lat/Lon hddd mm ss.s	UTM (13 S)
Trailhead	N33 41 56.7 W105 41 47.6	435447 3729008
Junction of T72 and T74	N33 41 51.4 W105 42 50.0	433841 3728858
Peak of Carrizo Mountain	N33 41 25.9 W105 43 41.6	432507 3728081

### **Links to Other Resources**

[Jicarilla/Carrizo Area-p1 Map \(5 MB\)](#)

[White Oaks South Topo Map](#)

Last Hiked: 10/27/2017

1/11/2018