

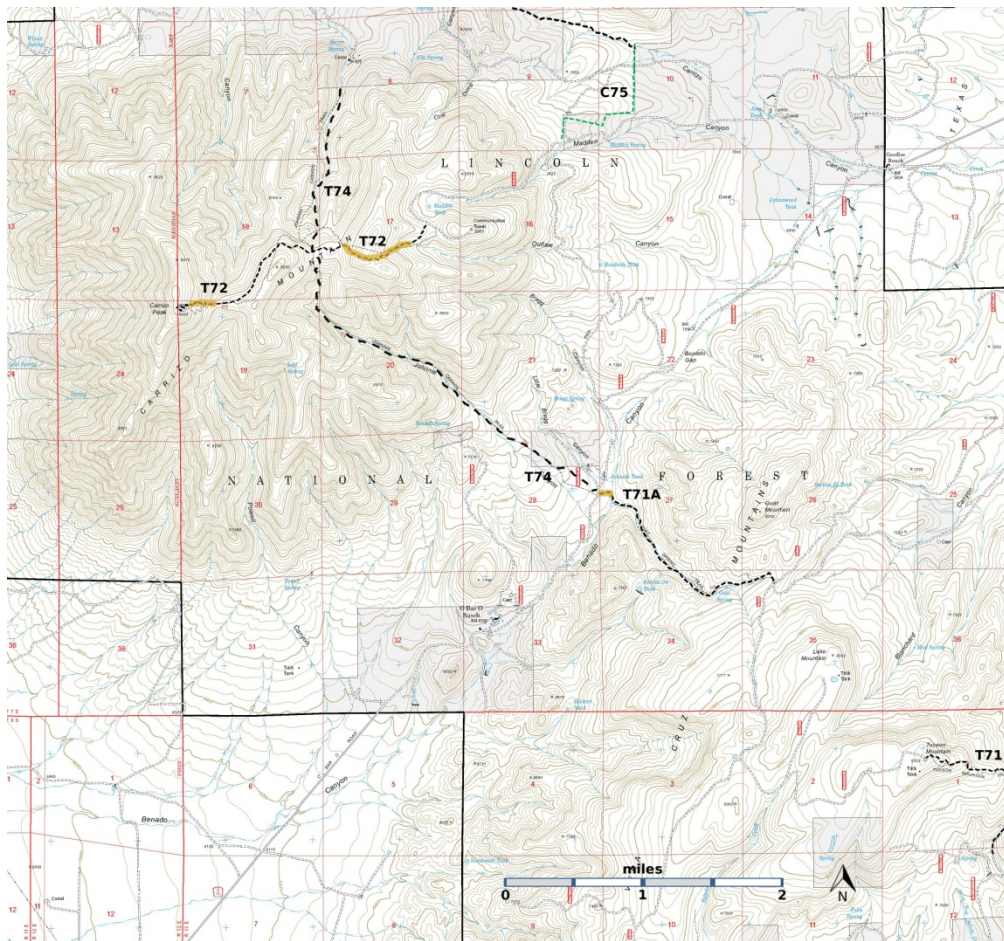
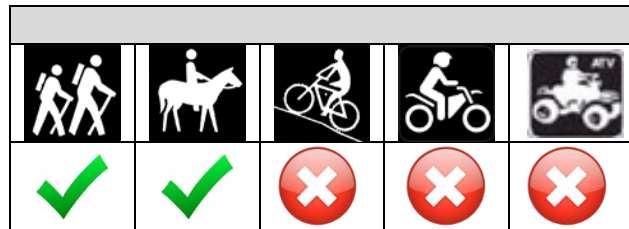
T71 Tucson Mountain Trail Smokey Bear Ranger District



T71
GPS Track (as .GPX)

Left click to open in your browser; then save from browser.

LENGTH	ELEVATION	DIFFICULTY	SCENERY
1.4 miles	7320 - 8320 ft 1000 ft difference	Difficult	3



[Link to map color/symbol codes](#)

T71, T71A, T72, T74, and T75 (partial) are shown as black dashed lines on the map. Yellow over a trail indicates that that portion of the trail is intermittent or hard to follow. The map image may be downloaded through the White Mountain Wilderness link below. The image can then be expanded and/or manipulated at high resolution

NOTE: Many years ago, a seven mile long trail --Tucson Mountain Trail -- ran from FR441 across Tucson Mountain and down its eastern slope. That trail was numbered T71. Only two segments of that trail are now in use. T71A connects FR441 and FR84, and T71 begins at the summit of Tucson Mountain and runs down its eastern slope. However, the signage at both ends of the present T71A still says “T71 Tucson Mountain Trail”. To add to the confusion, at the time of the 2002 edition of the Trail Guide: Lincoln National Forest, the present T71A was numbered T71.

DESCRIPTION: At the T71 trailhead, there is a gate in the fence. Go through the gate and look to the left for a single path trail. Follow the trail for 0.8 miles down the ridge – there are some downed trees. It is marked with blazes and cairns. At mile 0.8, the trail turns right and goes down canyon – there is an old sign post (no sign) near this point. Continue for 0.6 miles down a good trail to the signed lower trailhead. The trail ends at private property, so you will have to retrace your steps. There are occasional good distant views from the ridge.

If you go to the trouble to drive toward T71 trailhead, at the peak of Tucson Mountain, you will encounter a “Y”. The right fork leads toward the peak and the gate mentioned above. The left fork (FR995) ends near a cliff with spectacular panoramic views to the north. Reap this reward for the abuse of your vehicle.

ACCESS: A high clearance vehicle, preferably 4-wheel drive, is needed to reach the eastern trailhead. From the US380 and US54 intersection in Carrizozo, drive US380 east 13.6 miles to milepost 79. Just beyond milepost 79 turn left on County Road C011 and follow it. At mile 1.6 from US380, C011 ends and FR84 begins as a very rough and rutty primitive road [LM: “This is the roughest road I have been on, lots of basketball sized rocks. It took a full hour to drive the five miles from the beginning of FR84 to the T71 trailhead.”]. At mile 4.6, there is an earthen tank. Make a hard right turn on to a bad road that may be signed FR995 (or FR1056 or FR9038). When you encounter the ledge, keep far right. Several roads branch off the correct route, and there is not much in the way of signage to help you. If you manage to stay on the correct route, at mile 1.5 from the earthen tank, you will encounter a “Y”. The left fork comes to a dead end near spectacular views. The right fork leads toward the peak of Tucson Mountain, 0.5 miles further. A link to the GPS track for the correct driving route, including the scenic overlook, is included in the **Links to Other Resources** section.

GPS Coordinates for Key Points

NAD83	Lat/Lon hddd mm ss.s	UTM (13 S)
Peak of Tucson Mountain	N33 38 39.2 W105 38 08.3	441056 3722890
Southeastern Trailhead	N33 38 04.4 W105 37 39.6	441789 3721813

Links to Other Resources

[Jicarilla/Carrizo Area Map-p1 \(5 MB\)](#)

[White Oaks South Topo Map](#)

[FR84-T71-LM.gpx](#)

Last Hiked: 10/8/2016

1/9/2018