

T70

Patos Mountain Trail

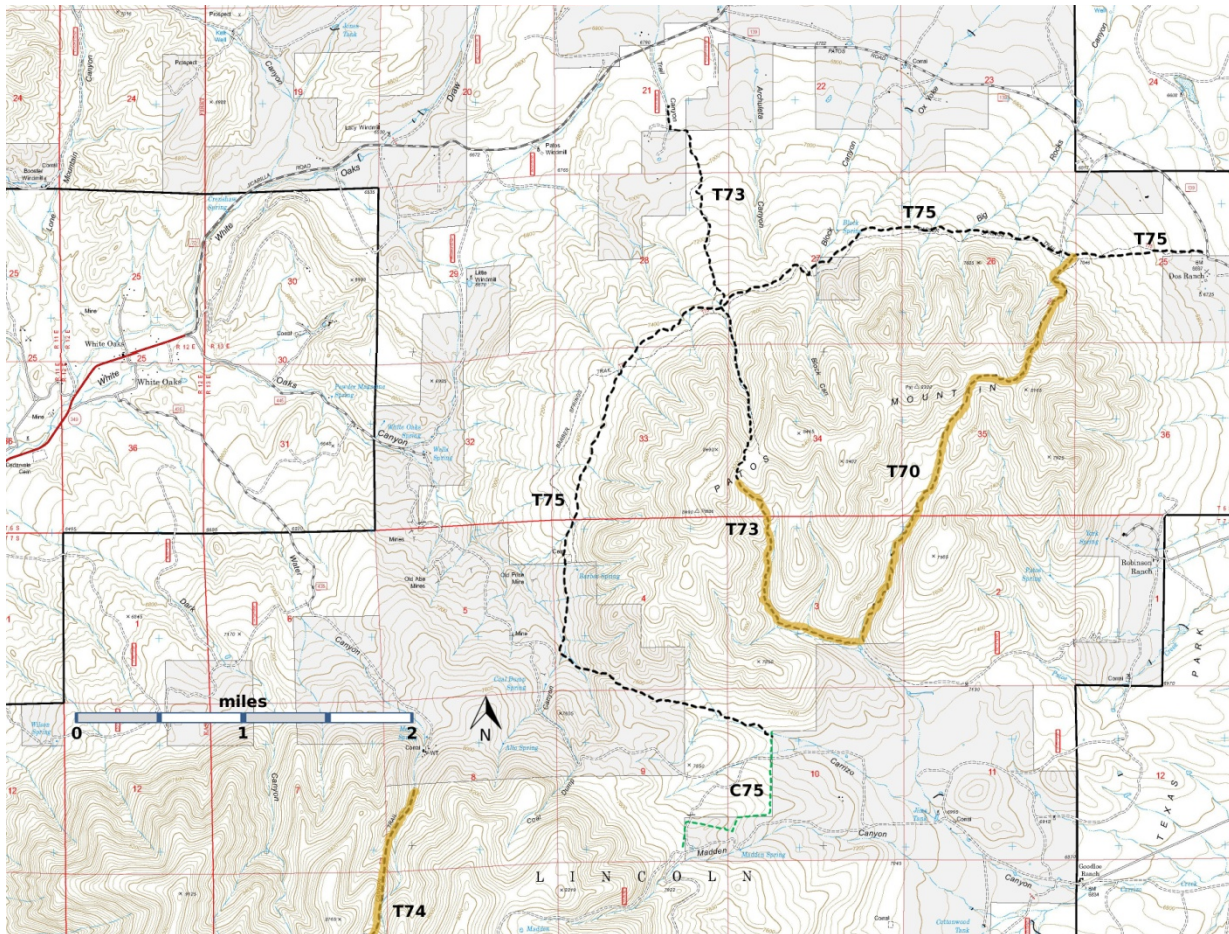
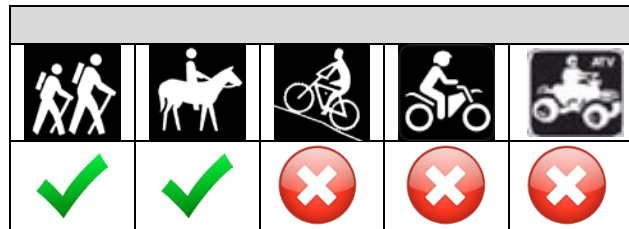
Smokey Bear Ranger District



T70
GPS Track (as .GPX)

Left click to open in your browser; then save from browser.

LENGTH	ELEVATION	DIFFICULTY	SCENERY
3.4 miles	7040 - 8000 ft 960 ft difference	Difficult	2



[Link to map color/symbol codes](#)

T70, T73, T74 (partial) , and T75 are shown as black dashed lines on the map. Yellow over a trail indicates that that portion of the trail is intermittent or hard to follow. The map image may be downloaded through the White Mountain Wilderness link below. The image can then be expanded and/or manipulated at high resolution.

DESCRIPTION: In 1994, shortly after the Patos Mountain fire, John Stockert described T70 as fading out beyond the saddle. It is now worse.

The T70 gpx track linked to this trail page shows the original T70 path. However, that path is over grown with brush, blocked by fallen trees, and tread is very difficult to locate. If you really want to hike this trail, use the Access instructions to reach the wooden T70 sign. Stand at this sign and look south-southwest toward the burned over ridge. Hike cross country toward that ridge, and as you begin to climb the east edge of the ridge, look for a black water tank. Pass a few yard to the west of the tank, and you will find about 100 yards of faint tread. Savor it, because this is the last tread you should expect to find on this hike. Hike along the ridge toward the saddle. Once you reach the saddle, hike west about 0.2 miles and then south southwest , passing to the west of a knob. From this point on, you can hike any of the many animal trails down the canyon to the junction with T73. Hiker are strongly advised to download the GPX track and use it to guide their hike.

On the way up the ridge there are distant views to the north, unfiltered since the trees were burned in 1994. There are also some nice distant views from the saddle

ACCESS: The north trailhead of T70 is accessed from T75. In an area with many bad roads, access to the northeast trailhead of T75 is surprisingly easy. From the intersection of US54 and US380 in Carrizozo, drive 3.3 miles north on US54 to paved County Road 349. Follow Co349 for 8.5 miles to the old mining town of White Oaks. The road continues as FR72, a well-maintained gravel road. Follow FR72 for 4.1 miles to the intersection with FR139 (Patos Road). Turn right and follow FR139 for 3.5 miles. The T75 trailhead is just west of the cattle guard. The sign is old and is several yards south of FR139. The most visible part is a Forest Service “hiker sign”. Hike T75 west 0.8 miles to the T70 junction, marked by a wooden T70 sign. The south trailhead is not marked and is not accessible by vehicle.

GPS Coordinates for Key Points

NAD83	Lat/Lon hddd mm ss.s	UTM (13 S)
Junction of T70 and T75	N33 45 28.3 W105 38 26.8	440657 3735494
Junction of T70 and T73	N33 43 29.7 W105 39 45.2	438618 3731852
South End of T70	N33 43 19.1 W105 39 24.5	439147 3731524

Links to Other Resources

[Jicarilla/Carrizo Area Map-p2 \(6 MB\)](#)

[White Oaks South Topo Map](#)

[White Oaks North Topo Map](#)

Last Hiked: 5/10/2017

2/6/2017