

T65

North Base Trail

Smokey Bear Ranger District



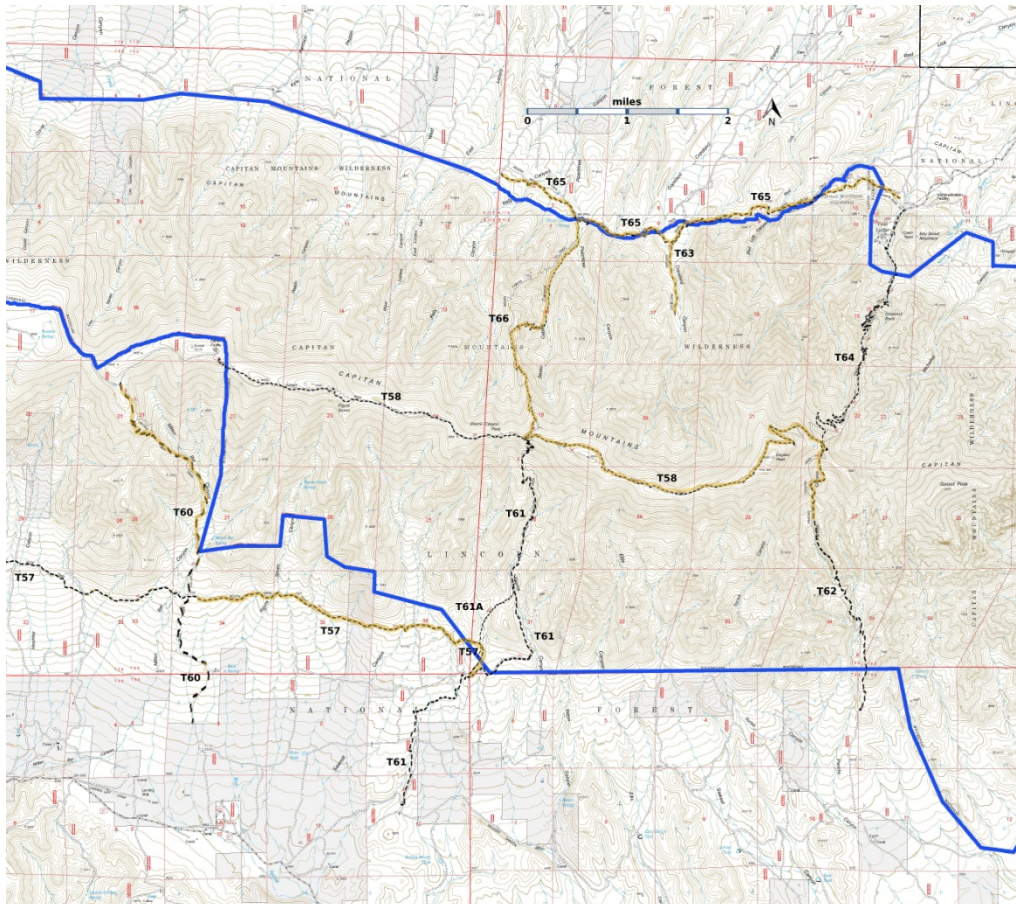
T65

GPS Track(as .GPX)

Left click to open in your browser; then save from browser.

LENGTH	ELEVATION	DIFFICULTY	SCENERY
5.5 miles	6280 - 6980 ft 700 ft difference	Easy	3

Allowed Usage				



[Link to map color/symbol codes.](#)

The Pine Lodge Fire in 2019 burned over parts of T63, T64, and T65. Check for UPDATES.

T57 (partial), T58, T60, T61, T61A, T62, T63, T64, T65, and T66 are shown as black dashed lines on the map. Yellow over a trail indicates that that portion of the trail is intermittent or hard to follow. The map image may be downloaded through the White Mountain Wilderness link below. The image can then be expanded and/or manipulated at high resolution.

CAUTION: T65 is shown incorrectly on many Forest Service maps.

Note: It is strongly recommended that hikers download and follow the GPX track for T65.

DESCRIPTION: T65 connects the Boy Scout Mountain/Pine Lodge Community summer home area with FR616, North Base Road. The trail is just outside the Capitan Mountains Wilderness, closely paralleling its northern boundary. It crosses several major canyons, a few of which have small streams. Generally, gradients vary up to 15%.

The two sections of T65 are connected by the last 0.2 mile of Forest Road FR256 that leads to Seven Cabins Spring. The western section of T65 is 0.9 mile long. It branches off FR256 north 0.2 mile from Seven Cabins Spring at a signed beginning. The eastern segment of T65 is 4.4 miles in length. It starts at a signed location for T66 Seven Cabins Trail, 270 feet from the beginning of T66, Seven Cabins Trail, at Seven Cabins Spring.

Almost all of T66 was burned over in the 2004 Peppin fire. To follow this trail, hikers must constantly look ahead to find sawed logs (cut immediately after the fire) to estimate where the tread was. This works pretty well on the eastern portion where the logs may be 12" in diameter, but in the western portion, where the logs may be only 3" in diameter, finding the path is more difficult. Indeed, we were unable to find the original path in the section between 0.1 miles and 0.3 miles from the western trailhead.

Just east of the T63/T65 intersection, T65 has completely disappeared. If coming from the east, there is a burned sign post near FR163. Exit onto FR163, turn left, and hike 0.2 miles to the weathered T63/T65 signs. If coming from the west, turn left at the weathered T63/T65 signs, hike for 0.2 miles along FR163 to a fallen tree with rocks on it on the left (west) side of the road. Turn east and look for the burned sign post, the start of a vague tread.

ACCESS: For vehicular routes access T65:

(1) To reach the eastern trailhead of T65 in the Boy Scout Mountain/Pine Lodge Community area, begin in Capitan at the US380 and NM246 intersection; drive paved NM246 north and east 32 miles to milepost 32. Go another 0.2 mile; turn right on the signed Boy Scout Mountain Road, also FR130. Follow a maintained, but sometimes rough, dirt road 3.5 miles, angling slightly right at a confusing, unsigned intersection. 0.3 miles further on the right is a large sign for "North Base Trail, No. 65" and a carsonite sign for FR5645. Turn right, and follow a rough road into a primitive RV/camping area, and park before crossing a stream. C65-LM will lead you from the sign to the eastern trailhead.

Hike across the stream and past an iron gate on the left. Just beyond this gate is a camping area with an elevated fire ring. This is probably the real start of T65. Pass to the left of this fire ring onto a visible tread with many fallen trees.

(2) To reach the other trailheads, a high clearance vehicle is mandatory, and a 4-wheel drive is preferable. These are dry weather roads, and are often highly rutted and rough. For accessing T65, in Capitan take NM246 north and east 29 miles to milepost 29. Drive another 0.8 mile, and just beyond a Copeland Canyon sign, turn right (south) on signed FR163, a dirt road. After 5.4 miles of very poor driving conditions, the road reaches T65.

(3) To access a section of T65 that connects to T66, begin in Capitan and drive NM246 27 miles north and east to milepost 27. Go another 0.2 mile and turn right on the signed Seven Cabins Road, also signed FR256 after the turn. At mile 3.9, FR256 angles left. Atop a small rise, and on the right, at mile 5.3 is the junction with the signed *western segment* of T65. Drive another 0.2 mile to the end of FR256 at Seven Cabins Spring where T66, Seven Cabins Trail, begins. The *eastern segment* of T65 meets T66 just 270 feet south of the spring.

(4) To access the western trailhead of T65, go to mile 3.9 along FR256 from its beginning off NM246, mentioned just above, and proceed straight south (instead of angling left). The road immediately becomes FR616, North Base Road; drive 1.3 miles. The trailhead is on the left. The trail may be hard to find; look for small cairns on top of big rocks.

GPS Coordinates for Key Points

NAD83	Lat/Lon hddd mm ss.s	UTM (13 S)
Trailhead (West)	N33 37 55.8 W105 18 38.6	471181 3721416
Junction of T63 and T65	N33 37 28.2 W105 16 50.5	473966 3720558
Junction of T65 and T66	N33 37 27.8 W105 17 55.7	472286 3720549
Trailhead (East)	N33 37 34.6 W105 14 35.3	477450 3720747

Links to Other Resources

[Capitan Mountains Area-p2 \(14 MB\)](#)

[Arroyo Serrano West Topo Map](#)

[Capitan Peak Topo Map](#)

[Kyle Harrison Topo Map](#)

[C65-LM.gpx](#)

Last Hiked: 11/1/2017

1/3/2020