

T64

Capitan Peak Trail

Smokey Bear Ranger District

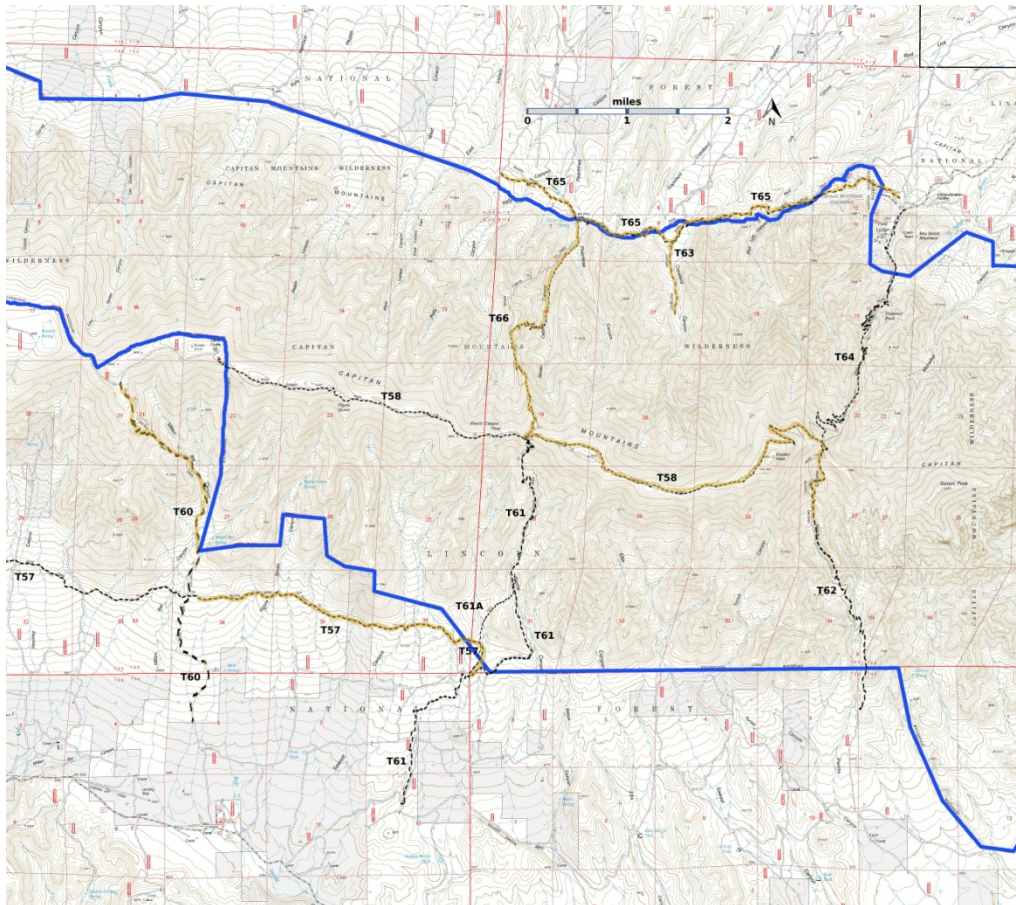


T64
GPS Track (as .GPX)

Left click to open in your browser; then save from browser.

LENGTH	ELEVATION	DIFFICULTY	SCENERY
5.6 miles	6300 - 8600 ft 2300 ft difference	More Difficult	4

Allowed Usage				



[Link to map color/symbol codes](#)

The Pine Lodge Fire in 2019 burned over parts of T63, T64, and T65. Check for UPDATES

T57 (partial), T58, T60, T61, T61A, T62, T63, T64, T65, and T66 are shown as black dashed lines on the map. Yellow over a trail indicates that that portion of the trail is intermittent or hard to follow. The map image may be downloaded through the White Mountain Wilderness link below. The image can then be expanded and/or manipulated at high resolution.

CAUTION: T64 is shown incorrectly on many Forest Service maps, particularly the upper one mile.

DESCRIPTION: With more than 60 switchbacks, T64 provides the easiest gradient (under 15%) of all trails that ascend or descend the Capitan Mountains. With rare exception, T64 is easy to discern. At times it follows ridges and borders the edge of high cliffs, providing spectacular deep canyon and distant views. The most impressive view of Chimney Rock is just prior to sunset, through breaks in trees, at about mile 3.1 from its lower end, although it is signed at mile 1.8. These are the best vistas along any trail in the Capitan Mountains, except for T66, Seven Cabins Trail.

Starting at mile 4.1, after a long, gentle gradient traverse along a side slope, there are five switchbacks along the T64. The T58/T62/T64 junction has wooden signs for the three trails.

To reach Capitan Peak, hike 1.6 miles west along T58, Summit Trail, beyond the common T58/T62/T64 junction. Near a wooden sign giving direction to Capitan Peak, leave T58 and hike south 0.2 mile over rough ascending terrain, gaining about 200 feet in elevation. The resulting panoramic view is worth the effort! The change in elevation from the T58/T62/T64 junction to the peak is about 1480 feet.

ACCESS: For those driving passenger cars, T64 has the most accessible trailhead to the Capitan Mountains Wilderness, if FR130 was graded after the last storm.

To reach the lower trailhead, start in Capitan from the US380 and New Mexico NM246 intersection. Drive paved NM246 north and east 32 miles to milepost 32. After another 0.2 mile, turn right on signed Boy Scout Mountain Road, also signed FR130. Follow the sometimes rough dirt road, angling slightly right at a confusing intersection after 3.5 miles. The signed T64 trail is 0.3 miles further on the left. To reach the upper trailhead, one must approach it from T58 or from T62.

GPS Coordinates for Key Points

NAD83	Lat/Lon hddd mm ss.s	UTM (13 S)
Trailhead (North, Lower)	N33 37 35.6 W105 14 31.6	477544 3720777
Junction of T58, T62, and T64	N33 35 30.2 W105 15 27.5	476094 3716919

Links to Other Resources

[Capitan Mountains-p2 Area \(14 MB\)](#)

[Arabela Topo Map](#)

[Capitan Peak Topo Map](#)

Last Hiked: 5/29/2017

1/14/2019