

T63

Copeland Canyon Trail

Smokey Bear Ranger District



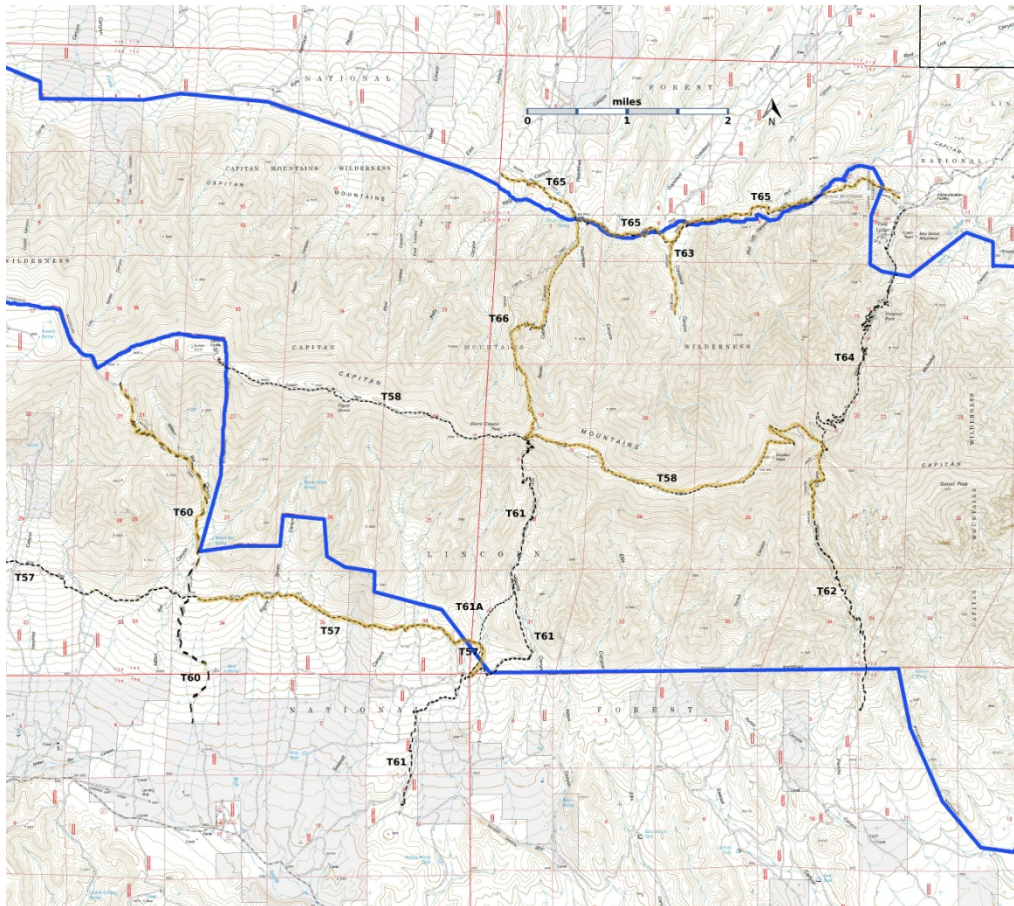
T63

GPS Track (as .GPX)

Left click to open in your browser; then save from browser.

LENGTH	ELEVATION	DIFFICULTY	SCENERY
1.0 miles	6820 - 7240 ft 420 ft difference	Easy	2

Allowed Usage				



[Link to map color/symbol codes](#)

The Pine Lodge Fire in 2019 burned over parts of T63, T64, and T65. Check for UPDATES

T57 (partial), T58, T60, T61, T61A, T62, T63, T64, T65, and T66 are shown as black dashed lines on the map. Yellow over a trail indicates that that portion of the trail is intermittent or hard to follow. The map image may be downloaded through the White Mountain Wilderness link below. The image can then be expanded and/or manipulated at high resolution..

CAUTION: T63 is shown incorrectly on many Forest Service maps.

DESCRIPTION: T63, an old mining road, branches off T65 and heads up canyon into the Capitan Mountains Wilderness. Along the trail are several small open areas and excavation piles from the mining era being reclaimed by nature. Gradients vary up to 15%. Soon the old road becomes difficult to follow because of fallen trees. Further on, a creek passes through three small, interesting pools, all within 250 feet of the first pond. An easy access, with no trail, into the wilderness can be gained by hiking up this somewhat steep-walled valley.

The 2004 Peppin Fire burned parts of T63, T65, and T66. Fortunately, the part of T63 within Copeland Canyon was not burned.

ACCESS: To reach the T63 trailhead, a high clearance vehicle is mandatory, and a 4-wheel drive is preferable. These are dry weather roads, and are often highly rutted and rough. For accessing T63, in Capitan take NM246 north and east 29 miles to milepost 29. Drive another 0.8 mile, and just beyond a Copeland Canyon sign, turn right (south) on signed FR163, a dirt road. After 5.4 miles of very poor driving conditions, there is a T63 carsonite sign.

In the 2002 edition of the *Trail Guide*, the northern end of T63 is its junction with T65 North Base Trail. T65 is incorrectly shown on the same maps, and now the carsonite T63 sign graces the supposed junction of T63 and T65. There is no parking available near the T63 sign; drive 0.3 miles further along FR163 to an open area and the weathered signs at the actual T63/T65 junction

GPS Coordinates for Key Points

NAD83	Lat/Lon hddd mm ss.s	UTM (13 S)
Trail End	N33 36 38.8 W105 16 55.8	473825 3719036
Trailhead (lower)	N33 37 28.2 W105 16 50.5	473966 3720558

Links to Other Resources:

[Capitan Mountains Area-p2 \(14 MB\)](#)

[Arroyo Serrano West Topo Map](#)

[Capitan Peak Topo Map](#)

[Kyle Harrison Topo Map](#)

Last Hiked: 4/9/2017

1/14/2019

