

T62

Pancho Canyon Trail

Smokey Bear Ranger District

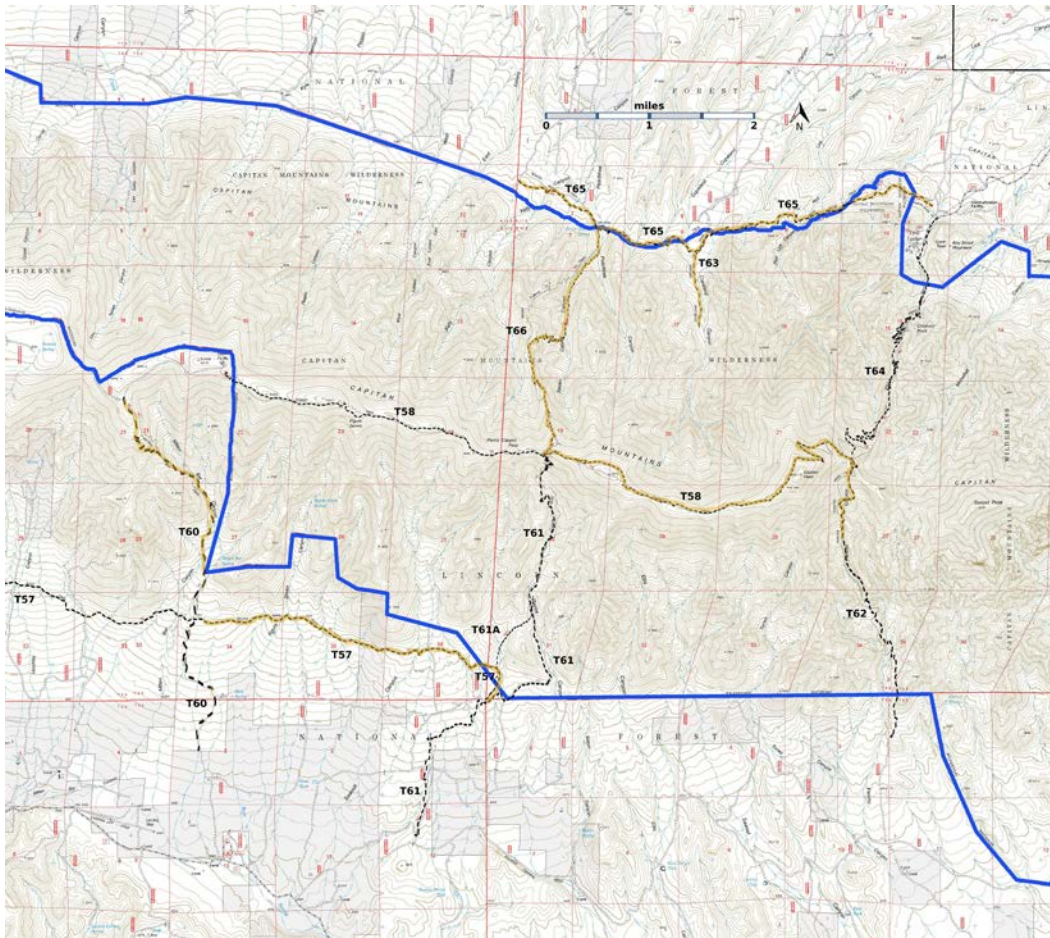


T62
GPS Track (as .GPX)

Left click to open in your browser; then save from browser.

LENGTH	ELEVATION	DIFFICULTY	SCENERY
3.6 miles	6620 - 8600 ft 1980 ft difference	Difficult	2

Allowed Usage				



[Link to map color/symbol codes](#)

T57 (partial), T58, T60, T61, T61A, T62, T63, T64, T65, and T66 are shown as black dashed lines on the map. Yellow over a trail indicates that that portion of the trail is intermittent or hard to follow. The map image may be downloaded through the White Mountain Wilderness link below. The image can then be expanded and/or manipulated at high resolution.

CAUTION: T62 is shown incorrectly on many Forest Service maps, particularly near its upper end

Note: It is strongly recommended that hikers download and follow the GPX track for T62.

DESCRIPTION: After the first mile from its lower end, T62 gradually becomes an intermittently steep trail of 30% to 50% gradient. In 2001, evidence of the 1994 Pancho Canyon Fire, including a scattering of fallen logs across the trail, began at about mile 1.7. Further on, frequent piles of fallen timber were scrambled over. Riparian areas were scattered from mile 0.4 to mile 2.4. At mile 1.0, a stream flowed at about 30 gallons per minute in 1994; when the area was visited in 2001 it was dry, although small puddles existed just down canyon.

Distant views are best near the lower end. Very dramatic effects of the forest fire, interesting landforms, and scenery appear along the trail including the “balanced” rock at mile 1.7.

The upper portion of T62 becomes difficult to follow, and eventually the tread disappears. Near mile 3.0, the fading trail emerges from a canyon onto a ridge, and the tread disappears. Look across the bowl and hike just below a scree slope. Then, look to the right and aim for a rocky point – there is some tread on the approach to this point. Cross the rocky point, veer left and hike down into the next bowl – pass about 30 yards below another scree slope. After this scree slope, there are several large cairns but no tread. Work your way up the tree-strewn slope to the ridge. Once on the ridge, turn left and work your way past a few cairns and many fallen trees to the signed intersection with T58 and T64.

To hike T62 from its upper trailhead, hike straight down the tree-strewn ridge to an old heliport – look for a few rocks with yellow paint on them. Just past the heliport is a stump with a rock on. Turn right and work your way down the tree-strewn slope, past a few large cairns, and pass 30 yards below a scree field. Veer left and aim for a rocky point. Cross the rocky point and aim to pass just below another scree field.. Veer left and aim for the ridge, where you will find cairns and some tread.

ACCESS: To reach the lower T62 trailhead, a high clearance vehicle is needed. Begin in Capitan at the intersection of US380 and NM246. Drive US380 east 8.4 miles to County Road C 002, also signed as FR57. Note *two roads going left* within about ten feet of each other. The one on the right goes to a picnic area. The one on the left, FR57, begins as a good gravel road and at mile 5.3, passes Baca Campground [Site of a 1930’s CCC camp; ruins are still visible]. At mile 6.3, county road maintenance ends. County Road C005 begins, and goes straight ahead; *but don’t follow it*. Instead, turn left on FR57, an unmaintained road. Maximum speed here may be 10 mph. At mile 7.7 is T61, the Pierce Canyon Trail terminus, on the highest point along this road. Beyond this ridge, FR57 deteriorates even more with some severe erosion for another 6.8 miles before reaching FR536 on the left. The lower signed trailhead is accessed by driving, or

walking (strongly recommended), the very rough FR536 north 1.0 mile from its beginning off FR57. Note from Lynn Melton: We mean ROUGH – big rocks with scrape marks on them where someone bottomed out on this road.]

At the north end of FR536, an old wooden sign and “hiker sign” mark the trailhead. Two cairns on the right originally led to the trail, but that path is now overgrown with brush. Stand facing the large rock behind an alligator bark juniper. Scramble uphill, passing to the left of the large rock. You should reach T62 (and a large cairn) after about 30 yards.

To reach the upper trailhead for T62 at its common junction with T64, Capitan Peak Trail, and T58, Summit Trail, consult write-ups for those trails.

GPS Coordinates for Key Points

NAD83	Lat/Lon hddd mm ss.s	UTM (13 S)
Junction of T58, T62, and T64	N33 35 30.2 W105 15 27.5	476094 3716919
Trailhead (South)	N33 33 17.6 W105 15 04.3	476683 3712833

Links to Other Resources

[Capitan Mountains Area-p2 \(14 MB\)](#)

[Capitan Peak Topo Map](#)

Last Hiked: 5/29/2017

1/14/2019