

T61A

Pierce Canyon Alternate Trail

Smokey Bear Ranger District

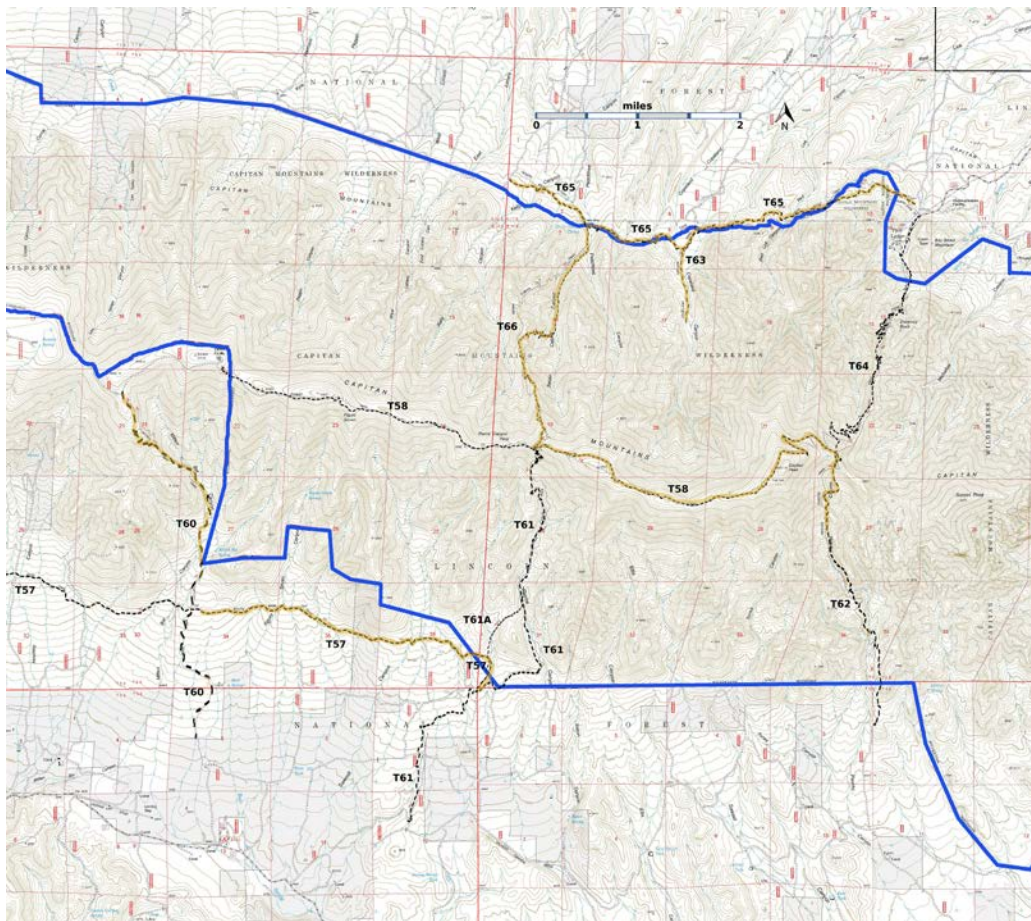


T61A
GPS Track (as .GPX)

Left click to open in your browser; then save from browser.

LENGTH	ELEVATION	DIFFICULTY	SCENERY
0.8 miles	7160 - 7520 ft 360 ft difference	Difficult	1

Allowed Usage				



[Link to map color/symbol codes](#)

T57 (partial), T58, T60, T61, T61A, T62, T63, T64, T65, and T66 are shown as black dashed lines on the map. . Yellow over a trail indicates that that portion of the trail is intermittent or hard to follow. The map image may be downloaded through the White Mountain Wilderness link below. The image can then be expanded and/or manipulated at high resolution.

DESCRIPTION: From its upper end, T61A crosses a small stream and climbs to a rocky ridge. The trail takes on the appearance of a primitive road during its last 0.2 mile before ending at a signed 90 degree turn at T57, South Base Trail. Frankly, the only reason for taking T61A is to cut off 0.4 mile when a loop trip is made on T 61, or if one wants to proceed along T57.

NOTE: The Forest Service worked on T61 and T61A in 2017. As a result, these trails are in pretty good shape..

ACCESS: To reach the lower end of T61A, hike T57 west 0.4 mile from its eastern trailhead at T61. Where T57 makes a left turn at a signed location, continue straight ahead on unsigned, rugged T61A. Reaching the upper end of T61A is kind of automatic for anyone hiking down T61 - two cairns, one of=n each side of the trail. The GPS coordinates for these junctions are given below.

GPS Coordinates for Key Points

NAD83	Lat/Lon hddd mm ss.s	UTM (13 S)
Junction of T57 and T61A	N33 33 49.8 W105 18 53.3	470782 3713841
Junction of T61 and T61A	N33 34 24.4 W105 18 36.0	471230 3714906

Links to Other Resources

[Capitan Mountains Area-p2 \(14 MB\)](#)

[Capitan Peak Topo Map](#)

Last Hiked: 5/24/2017

1/14/2019