

T58 Summit Trail

Smokey Bear Ranger District



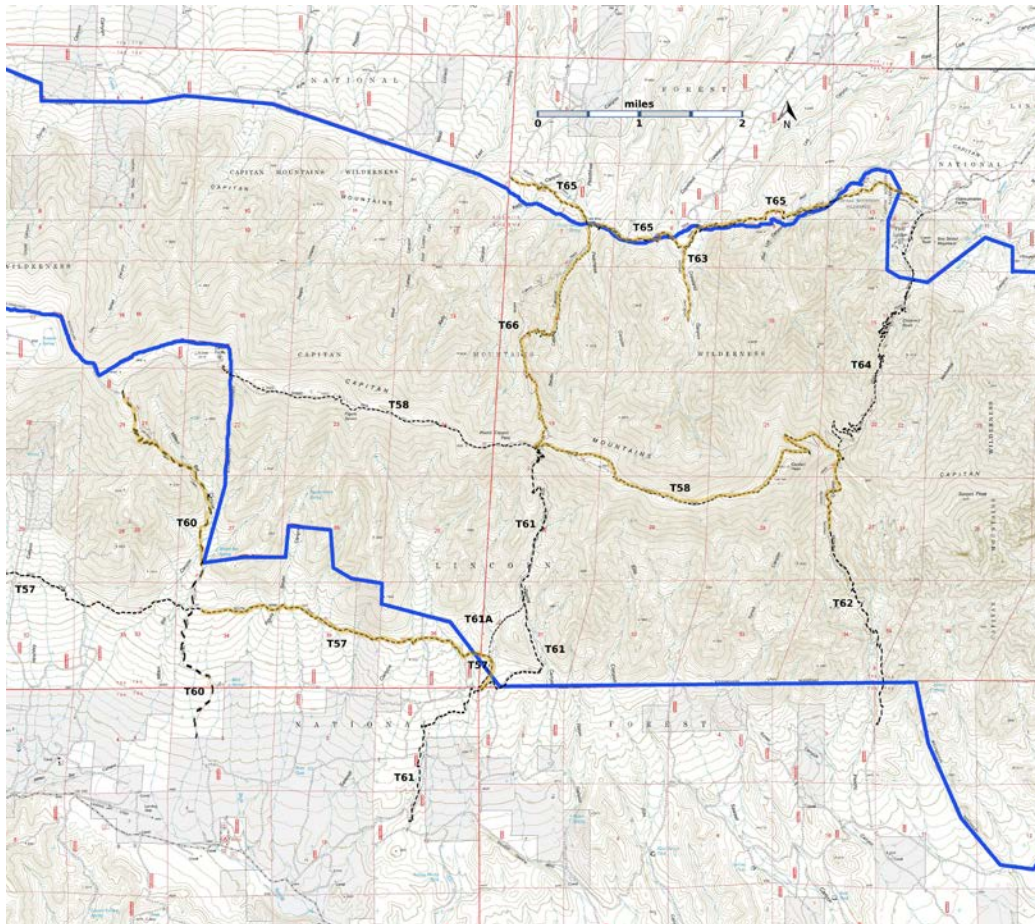
T58

GPS Track(as .GPX)

Left click to open in your browser; then save from browser.

LENGTH	ELEVATION	DIFFICULTY	SCENERY
8.1 miles	8680 - 10200 ft 1520 ft difference	Difficult	4

Allowed Usage				



[Link to map color/symbol codes](#)

T57 (partial), T58, T60, T61, T61A, T62, T63, T64, T65, and T66) are shown as black dashed lines on the map. Yellow over a trail indicates that that portion of the trail is intermittent or hard to follow. The map image may be downloaded through the White Mountain Wilderness link below. The image can then be expanded and/or manipulated at high resolution.

Caution: T58 is shown incorrectly on many Forest Service maps, particularly in the vicinity of the triple intersection of T58, T62, and T64.

DESCRIPTION: The highest and most scenic trail in the Capitan Mountains Wilderness, this path is sometimes clear and flanked by rocks and sometimes become vague when passing through meadows. It follows the main ridge of the Capitan between the western T58 trailhead and its eastern end (beyond Capitan Peak).

In Summer 2015 a volunteer trail crew from Arizona cut 877 trees along T58 and cleared the trail. If you do the arithmetic, that amounts to one fallen tree every 50 feet for the length of the trail! However, the portion of T58 west of the intersection with T61/T66 has many fewer fallen trees than the portion east of this intersection. In this segment it is easy to lose sight of the tread.

Beginning at its western end, at mile 1.1, the trail passes the highest point (not officially designated) on the Capitan Mountains at 10,201 feet. The somewhat vague high point can be missed if not anticipated because it is not signed on the trail. Distant views are not possible from this high point.

T58 passes through mature forests of spruce, white fir, Douglas-fir, southwestern white pine, and quaking aspen, and a number of outstanding meadows. Surprisingly, the meadows make up only about 8% of the trail's environment.

The path favors the south side of the ridge until mile 2.9. Once on the north side, a more delineated route passes through fewer meadows and generally younger but denser trees than on the south exposure.

T58 reaches the common intersection of T60 and T66 at mile 3.7 – Pierce Canyon Pass. Between mile 4.1 and mile 4.8 there is an extensive area of crisscrossed aspen trees blown down by the wind. A friend called it “pickup sticks”. It is almost impassable.

Several hills along the ridge have gradients averaging 10% to 15%, with 25% being the maximum. Trees surrounding the occasional meadows frequently obstruct distant views. Grand panoramas are best from the Capitan Peak area, which is off the trail but can be reached. At mile 6.5, 1.6 miles before the trail ends, the route passes its highest elevation (9,880 feet) on the north side of the peak, near a wooden sign giving direction to Capitan Peak. There is no trail to the peak, and hiking the minimum of 0.2 mile cross-country and 200 feet gain in elevation to it is difficult due to vegetation, rough terrain, and steepness. However, a panoramic viewing bonanza awaits those who do!

T58 provides access to the following trails, in the sequence reached, from its western trailhead, followed by mileage: T61 and T66 intersection, 3.7 miles; T62 and T64 intersection, 8.1 miles. There are wooden signs at the T58/T62/T64 intersection.

ACCESS: T58 can be reached by using a high clearance, 4-wheel drive vehicle, or by hiking up any of the access trails. To reach its western trailhead, begin in Capitan at the NM48 and US380 intersection. Drive US380 east 2.0 miles to FR56, Capitan Pass Road, also known as County Road C001. Turn left and follow FR56 for 16 miles, to the signed T58 trailhead, near the end of FR56 at the electronic site on top of the Capitan Mountains.

The first portion of FR56 is a well-maintained, graveled road. At mile 5.4, the maintained route turns right and becomes FR338, also known as County Road C003. *Do not turn right.* Instead, proceed straight ahead over a rutty set of tracks, signed as FR6, that immediately gives way to a rough, rocky route. *Do not attempt if muddy.* At mile 7.1 (on Capitan Pass) from US380, turn right to continue following FR56.

From here the road is steep (up to 20% gradient) and rocky, until one reaches a ridge at mile 9.3. Beyond here, it is periodically rocky and steep to the T58 trailhead. Park just beyond the trailhead and off the road; don't block FR56. For accessing T58 from any of the other trails, consult the write-up for each one.

GPS Coordinates for Key Points

NAD83	Lat/Lon hddd mm ss.s	UTM (13 S)
Trailhead (west)	N33 36 19.4 W105 21 36.9	466579 3718461
Junction of T58, T61, and T66	N33 35 37.7 W105 18 27.5	471455 3717161
Junction of T58, T62, and T64	N33 35 30.2 W105 15 27.5	476094 3716919

Links to Other Resources

- [Capitan Mountains Area-p2 \(14 MB\)](#)
- [Capitan Peak Topo Map](#)