

T57 South Base Trail

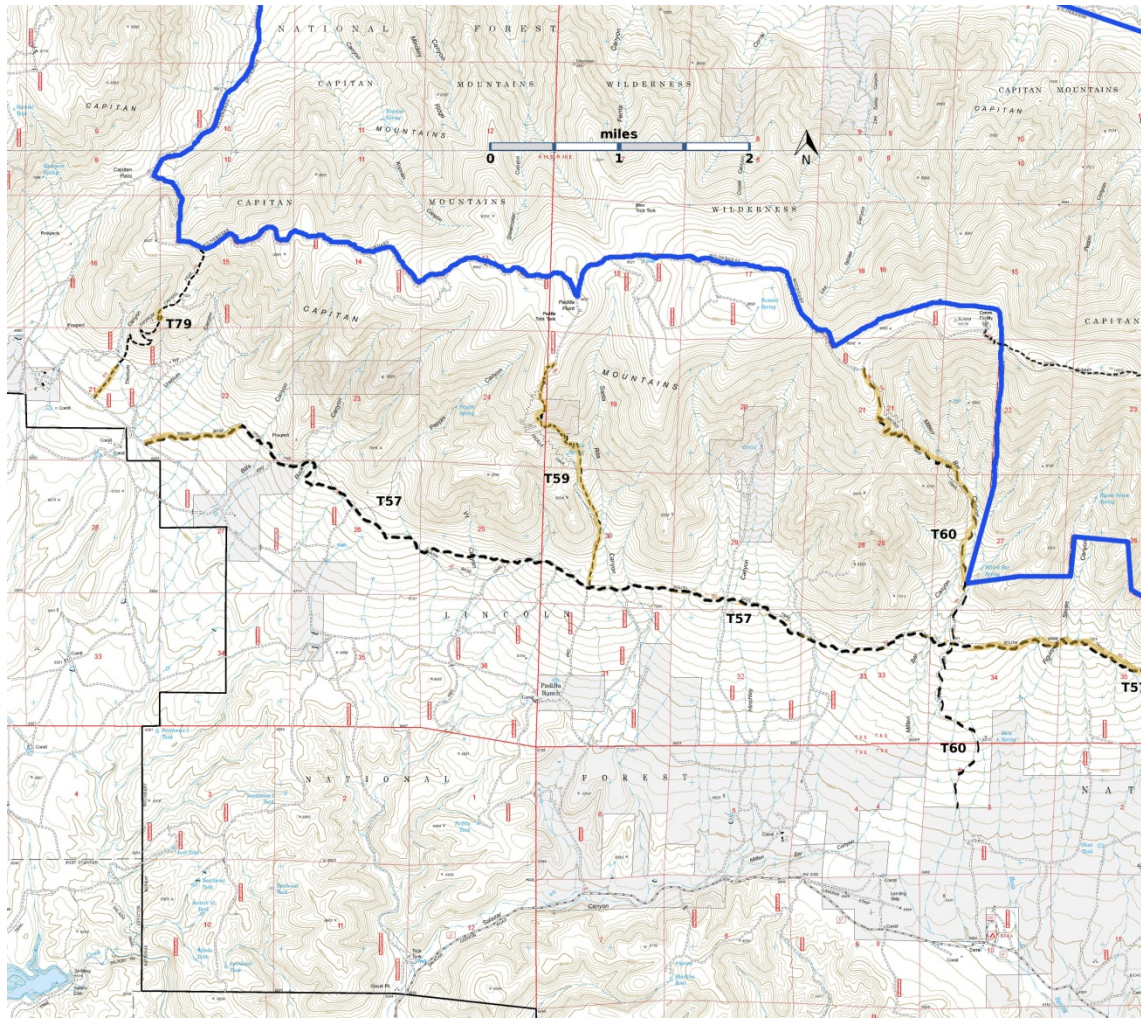
Smokey Bear Ranger District

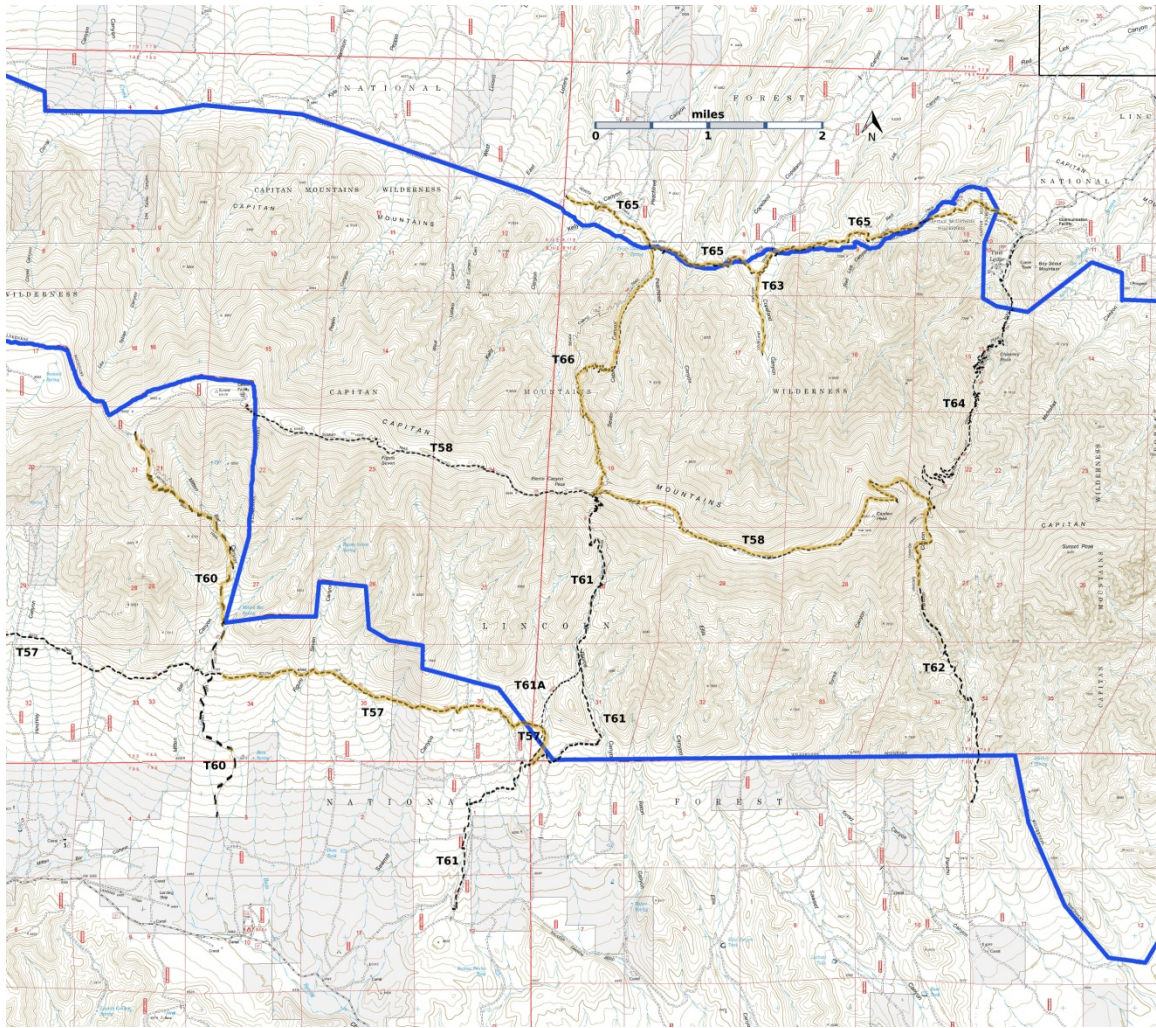


T57
GPS Track (as .GPX)
[See text]
Left click to open in your browser; then save from browser.

LENGTH	ELEVATION	DIFFICULTY	SCENERY
11.2 miles	6720 - 7320 ft 600 ft difference	Moderate	2

Allowed Usage				





[Link to map color/symbol codes](#)

T57, T58, T59, T60, T61, T61A, T62, T63, T64, T65, T66 and T79 are shown as black dashed lines on the two maps. Yellow over a trail indicates that that portion of the trail is intermittent or hard to follow. The map image may be downloaded through the Capitan Mountain Wilderness links below. The image can then be expanded and/or manipulated at high resolution.

DESCRIPTION: T57 provides the only means of accessing the lower railheads for T59 (4.3 trail miles from west end) and T60 (7.4 trail miles from west end). The route extends along the southern base of the Capitan Mountains between its western end on FR338 (near FR56) and its eastern terminus on T61. Path conditions vary considerably, from vague, to a cattle trail, to a very rocky and steep route, to a nice trail often bordered by rocks, to a perfect path covered with pine needles, cones and small broken twigs. Gradients are usually under 15% with some occasionally ranging 30% or more. The trail west of the T60 trailhead is in better shape and more interesting than that to the east. The few distant views are all west of mile 7.7 and are variously filtered through trees.

As the maps show, T57 can be tricky to follow at its western end and at its eastern end. At the western end, the trail is often hard to find in the low brush and sandy soil. Once a cattle gate is reached, T57 becomes a decent single path trail to T59 and T60. About 100 yards east of the T57/T60 intersection (at a cattle gate), T57 becomes very hard to follow. Indeed, at the eastern end, one can look past the wooden T57 sign and not be able to see any path to follow.

Several primitive, old mining roads and unofficial trails intersect T57 and may provide interesting side trips.

ACCESS: T57 is accessible from three locations, each requiring a high clearance vehicle:

(1) To reach its signed, western trailhead, begin in Capitan at the NM48 and US380 intersection. Drive US380 2.0 miles east to Forest Road FR56, Capitan Pass Road, also County Road C001. Turn left and follow FR56 5.4 miles to where the graveled route makes a right turn and becomes FR338, also County Road C003. Follow FR338. The maintained section soon ends at mile 0.3 where it enters Lone Tree Bible Camp. Do not enter the camp but continue straight ahead. Now unsigned, FR338 becomes a dry weather road and is quite rough. Follow FR338 another 0.9 mile to the partially hidden sign for the T57 trailhead on the left, just 0.1 mile beyond a large Uranium Canyon sign.

(2) T57 can be accessed from FR338 at 3.6 *trail miles* from the western T57 trailhead as follows: Drive rough (and squishy muddy in wet seasons) FR338 southeast 4.2 miles from its beginning with FR56 to the unsigned junction for FR9796A that goes left (north), just after passing a draw labeled Peppin Canyon [GPS coordinates for this hard-to-find junction are given below.]. Follow FR 9796A, via an obscure double track, for 0.3 mile to a barbed wire gate. Continue straight ahead for another 0.3 miles, following vague eroded tracks to a cairn on the right. Do not drive past this point. Look northeast for an old, road, marked with occasional cairns that leads in 0.4 miles to T57. This rough connecting trail may be tricky to follow, but T57 is signed when reached. Warning: This section of FR338 contains many large rocks. A high clearance vehicle and substantial driving skill are required.

(3) The eastern trailhead for T57 is reached by hiking T61, Pierce Canyon Trail, for 2.0 miles from its lower trailhead off FR57; see the T61 write-up for its access from FR57. Of the three access routes, this is the most rugged and least interesting.

GPS Coordinates for Key Points

NAD83	Lat/Lon hddd mm ss.s	UTM (13 S)
Trailhead (West)	N33 35 35.7 W105 28 14.0	456339 3717158
Junction of FR57 and FR9796A	N33 34 10.3 W105 25 56.5	459872 3714512
Junction of T57 and T61	N33 33 36.8 W105 19 01.9	470558 3713442

Links to Other Resources

[Capitan Mountains Area-p1 \(10 MB\)](#)

[Capitan Mountains Area-p2 \(14 MB\)](#)

[Capitan Pass Topo Map](#)

[Capitan Peak Topo Map](#)

[T57-LM-seg1.gpx](#)

[FR9796A-LM.gpx](#)

Last Hiked: 4/2/2018

1/14/2019