

T55

Church Mountain Trail

Smokey Bear Ranger District



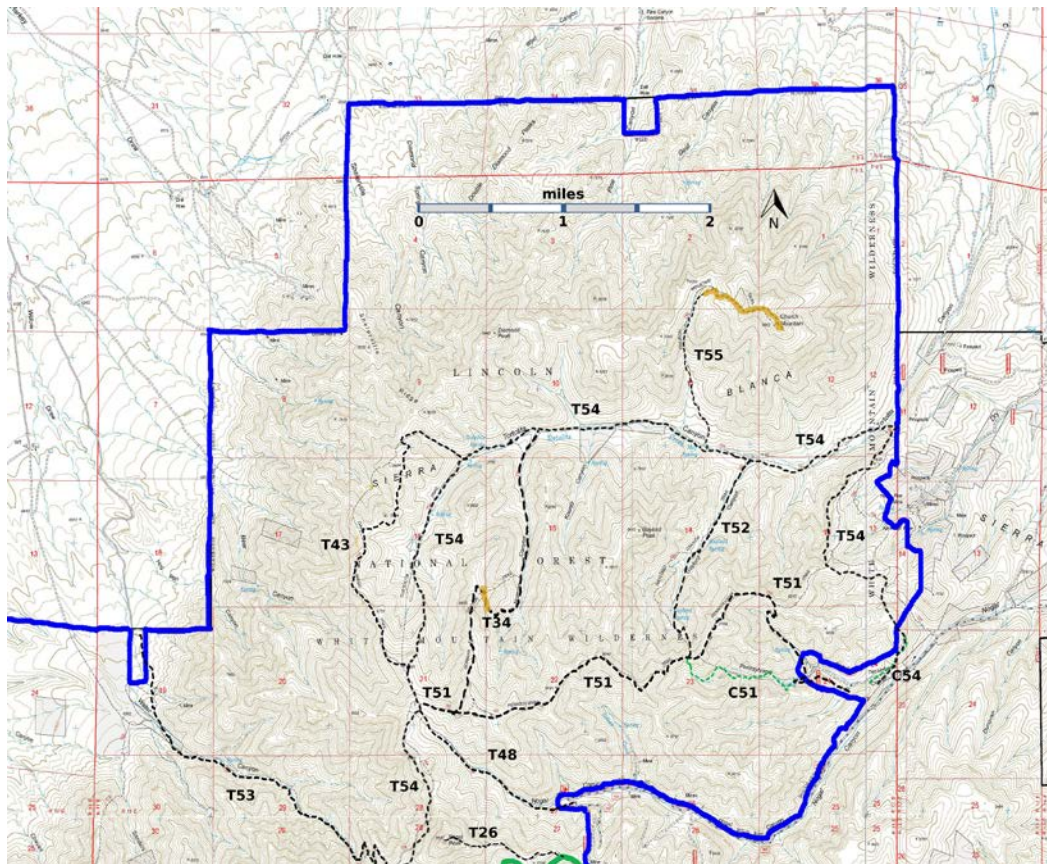
T55

GPS Track (as .GPX)

Left click to open in your browser; then save from browser.

LENGTH	ELEVATION	DIFFICULTY	SCENERY
1.9 miles	7240 - 8720 ft 1480 ft difference	Difficult	3

Allowed Usage				



[Link to map color/symbol codes](#)

T26, T34, T43, T48, T51, T52, T53 (partial), T54, and T55 are shown as labeled, black dashed lines on the map. The solid blue line is the border of the White Mountain Wilderness. The solid green line is T25

Crest Trail. T26, T34, T43, T48, T51, T52, T54, and T55 are shown as labeled black dashed lines on the map. . Yellow over a trail indicates that that portion of the trail is intermittent or hard to follow. The map image may be downloaded through the White Mountain Wilderness link below. The image can then be expanded and/or manipulated at high resolution.

DESCRIPTION: T55 makes its way up the drainage in a spur canyon and becomes faint after passing the old trick tank at mile 1.1. The trail for the remaining 0.8 mile to the summit of Church Mountain is hard to find. I strongly recommend downloading the gpx file and using it as your guide for the latter part of T55. There are nice but not exciting views from the summit.

ACCESS: T55 is accessed from T54.

See the write up for T54 for instructions to reach the signed lower trailhead of T54. The T55 trailhead is approximately 1.4 miles up Tortolita Canyon from the point where T54, descending from the 900 foot high ridge, joins the old road in the bottom of Tortolita Canyon. Bend left immediately after crossing Tortolita creek.

NAD83	Lat/Lon hddd mm ss.s	UTM (13 S)
Summit of Church Mountain	N33 32 52.2 W105 45 40.1	429339 3712280
Trick Tank	N33 33 04.1 W105 46 15.8	428421 3712654
Junction of T54 and T55	N33 32 52.2 W105 45 40.1	429340 3712282

Links to Other Resources

[White Mountain Wilderness Trails-p4 \(7 MB\)](#)

[Church Mountain Topo Map](#)

[Nogal Topo Map](#)

[WMW Forest Service Resource](#)

Last Hiked: 9/23/2018

1/13/2019