

T52
Gaylord Canyon Trail
Smokey Bear Ranger District

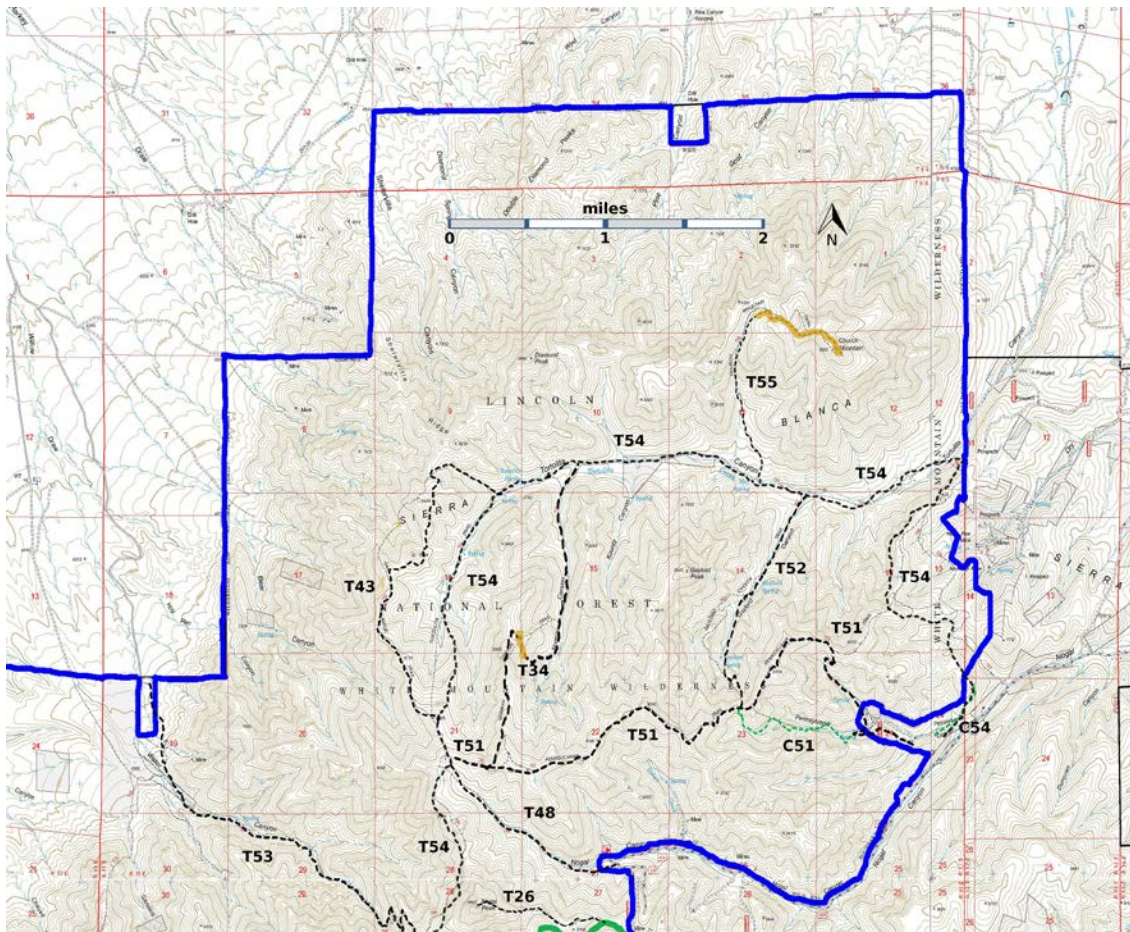


T52
 GPS Track (as .GPX)

Left click to open in your browser; then save from browser.

LENGTH	ELEVATION	DIFFICULTY	SCENERY
1.9 miles	7160 - 8440 ft 1280 ft difference	Difficult	1

Allowed Usage				



[Link to map color/symbol codes](#)

T26, T34, T43, T48, T51, T52, T53 (partial), T54, and T55 are shown as labeled, black dashed lines on the map. The solid blue line is the border of the White Mountain Wilderness. The solid green line is T25 Crest Trail. . Yellow over a trail indicates that that portion of the trail is intermittent or hard to follow. The map image may be downloaded through the White Mountain Wilderness link below. The image can then be expanded and/or manipulated at high resolution.

CAUTION: T52 is shown incorrectly on many Forest Service maps.

NOTE: Although T52 is open to horses and pack animals, there are fallen trees across the lower portion of the trail.

DESCRIPTION: From its upper end, signed T52 descends sharply for about 0.2 miles (>25% gradient) to a switchback to the left, marked by cairns. At the upper end of the meadow, it makes a switchback to the right and descends toward the canyon bottom. From this point the trail (mostly cattle trails) descends along the canyon bottom, sometimes on the east side and sometimes on the west side. Gaylord Spring – with its watering trough made from a log – is reached at mile 0.6. The trail continues along the canyon bottom – again sometimes on the east side and sometimes on the west side – to its signed junction with T54.

If one is hiking up T52 there are two extra instructions:

(1) About thirty yards up canyon from Gaylord Spring, scramble up the hillside to the left to reach the (cattle) trail.

(2) The last – steep-- portion of T52 is easy to follow once you find it. Follow the canyon bottom until the drainage ends at a meadow. Follow a nice single path thread to the end of the meadow and look for a switchback to the left and the trail that ascends from the drainage to the ridge.

ACCESS: T52 may be accessed from T51 or T54.

To reach the upper T52 trailhead, hike approximately 2.2 miles up T51 to the signed T52 trailhead.

See the write up for T54 for instructions to reach the signed lower trailhead of T54. The lower T52 trailhead is approximately 1.1 miles up Tortolita Canyon from the point where T54, descending from the 900 foot high ridge, joins the old road in the bottom of Tortolita Canyon..

GPS Coordinates for Key Points

NAD83	Lat/Lon hddd mm ss.s	UTM (13 S)
Junction of T52 and T54	N33 32 06.4 W105 45 51.4	429038 3710873
130 degree turn at bottom of steep section	N33 31 08.9 W105 46 27.1	428104 3709111
Junction of T51 and T52	N33 30 55.8 W105 46 19.9	428285 3708705

Links to Other Resources

[White Mountain Wilderness Trails-p4 \(7 MB\)](#)

[Church Mountain Topo Map](#)

[Nogal Topo Map](#)

[WMW Forest Service Resource](#)

[Nogal Canyon Trailhead](#) [1996 Information]

Last hiked: 10/11/2017

1/14/2019