

T49

Barber Ridge Trail

Smokey Bear Ranger District

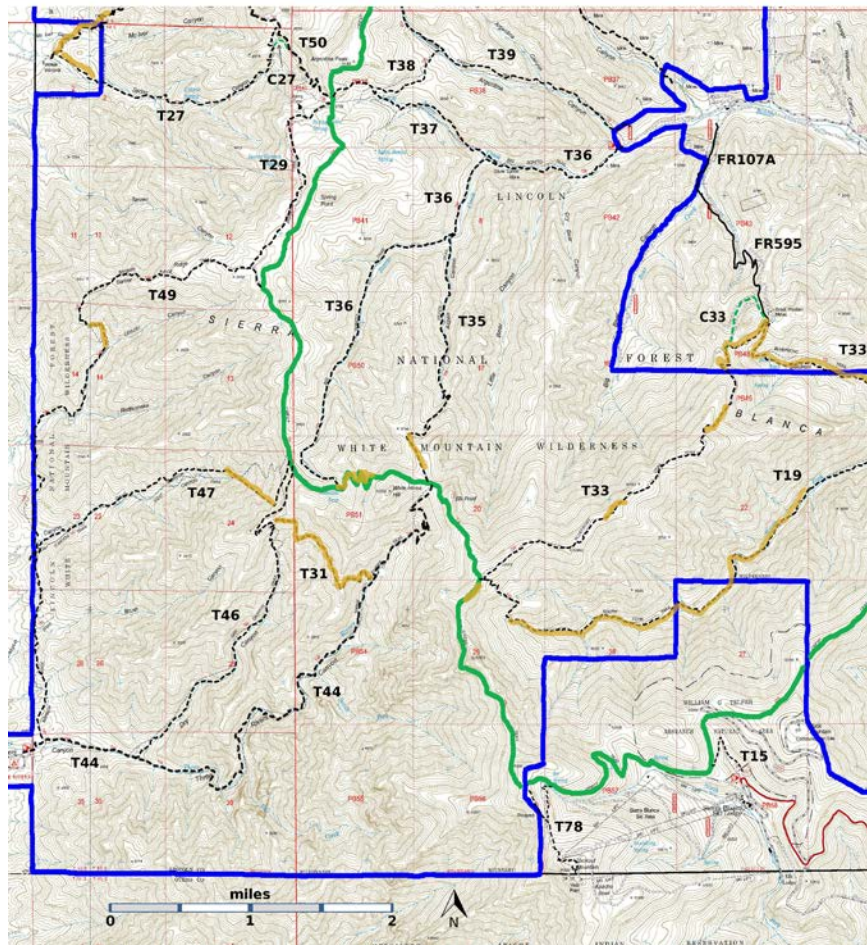


T49
GPS Track (as .GPX)

Left click to open in your browser; then save from browser.

LENGTH	ELEVATION	DIFFICULTY	SCENERY
5.8 miles	6440 - 9000 ft 2560 ft difference	Difficult	2

Allowed Usage				



[Link to map color/symbol codes](#)

T15, T19 (partial), T27, T29, T31, T33 (partial), T35, T36, T38, T39, T44, T46, T47, T49, T50 (partial), and T78 are shown as labeled, black dashed lines on the map. The solid blue line is the border of the White Mountain Wilderness. The solid green line is T25 Crest Trail. Yellow over a trail indicates that that portion of the trail is intermittent or hard to follow. The map image may be downloaded through the White Mountain Wilderness link below. The image can then be expanded and/or manipulated at high resolution.

DESCRIPTION: T49 Barber Ridge Trail connects the Three Rivers trailhead area with T25 Crest Trail. T49 branches off of T44 about 0.2 miles from the lower T44 trailhead. It then leads north, generally following the Lincoln National Forest boundary. This portion of T49 crosses several drainages, and the down-then up rocky hikes – similar to hogbacks – are frustrating. The junction with T47 Goat Canyon Trail is 1.8 miles from the T44 trailhead. About a mile further, T49 turns up canyon and follows the canyon bottom. Near three large cairns T49 climbs out of the canyon to Barber Ridge and follows the south side of the ridge to a saddle and then meadows and Ponderosa forest. About 0.5 miles from the upper trailhead, T29 Phantom Trail branches off to the north, just before the eight foot high “Cathedral Cairn” (my name).

T49 is a long, tiring hike. Added to that is the difficulty in finding a good path to connect the west end of the ridge with the canyon bottom. I have been through this area four times, and each time I took a different path. That is to say, there are multiple, not-very-good paths.

T49 can be a nice excursion hike from T25. Hike a mile or so down T49, with only modest descent, and you can enjoy views into and beyond the canyon. When descending T49, looking west from the “Cathedral Cairn”, there are a series of cairns that lead to the right (north) side of a small hill. Aim instead for the left (south) side of the small hill. That path makes an easier connection with the remainder of T49.

ACCESS: The lower T49 trailhead is 0.2 miles up T44 Three Rivers Trail from the T44 trailhead. The upper T49 trailhead is a junction with T25 Crest Trail.

GPS Coordinates for Key Points

NAD83	Lat/Lon hddd mm ss.s	UTM (13 S)
Junction of T44 and T49	N33 24 11.1 W105 52 51.2	418086 3696320
Junction of T47 and T49	N33 25 26.7 W105 52 55.3	417999 3698650
Junction of T49 and T25	N33 26 56.6 W105 51 08.6	420777 3701396

Links to Other Resources

[White Mountain Wilderness Trails-p2 \(8 MB\)](#)

[Godfrey Peak Topo Map](#)

[Nogal Peak Topo Map](#)

[WMW Forest Service Resource](#)

[Three Rivers Trailhead](#) [1996 Information]

Last Hiked: 9/27/2015

1/14/2019