

T48
Nogal Canyon Trail
Smokey Bear Ranger District

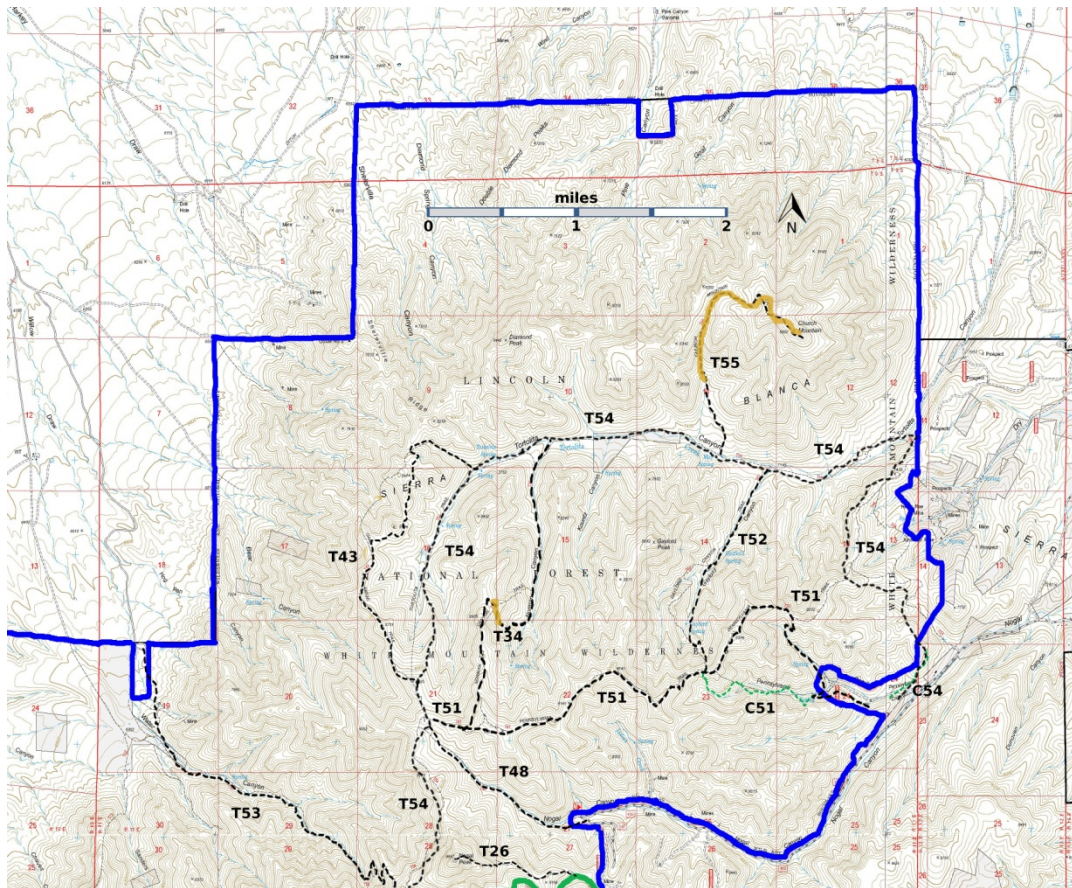


T48
 GPS Track (as .GPX)

Left click to open in your browser; then save from browser.

LENGTH	ELEVATION	DIFFICULTY	SCENERY
1.4 miles	8280 - 9060 ft 780 ft difference	Moderate	3

Allowed Usage				



[Link to map color/symbol codes](#)

T26, T34, T43, T48, T51, T52, T53 (partial), T54, and T55 are shown as labeled, black dashed lines on the map. The solid blue line is the border of the White Mountain Wilderness. The solid green line is T25 Crest Trail. Yellow over a trail indicates that that portion of the trail is intermittent or hard to follow. The map image may be downloaded through the White Mountain Wilderness link below. The image can then be expanded and/or manipulated at high resolution.

DESCRIPTION: This trail is frequently rough and has a variable gradient. It begins by threading through shrubbery and soon passes into a large meadow bordered by Nogal Peak on the left. Seen from here are open areas with sweeping hillsides, splendid panoramic vistas, and scattered groups of trees that invite exploration. Views extend to the open ridge at the head of the canyon.

T48 ends at the junction with T54 and is a means of accessing T34 and T51 to the north; see their write-ups. To the south, T54 is relatively easy to follow for 1.3 miles as it threads along the main ridge of the White Mountains and the west flank of Nogal Peak. It ends on T25, Crest Trail.

If you have a “designated driver” or two cars, T48 can be part of a wonderful, easily hiked loop around Nogal Peak. Start at the T25 trailhead off of FR108, hike T25 to T54. Take T54 to T48, and amble down T48 to the car. In late August, the wildflowers at the top can be wonderful! By starting at the T25 trailhead, you have to ascend only 400 feet, and you get to end the hike going down hill.

ACCESS: To reach the lower trailhead from Smokey Bear Ranger District Office in Ruidoso, drive NM48 north 8.3 miles to NM37. Turn left and follow NM37 northwest 9 miles to milepost 9. Go another 0.5 mile; turn left on FR400, also known as County Road C015, and follow the graveled, then dirt road 7.2 miles to a sharp left curve, marking the T48 trailhead and the end of FR400. This is also the beginning of FR108, Tanbark Canyon Road. Reaching the T48 trailhead via FR108 from FR107, Rio Bonito Road is also possible, but a high clearance vehicle and possibly 4-wheel drive may be required. The distance is 4.4 miles.

GPS Coordinates for Key Points

NAD83	Lat/Lon hddd mm ss.s	UTM (13 S)
Junction of T48 and T54	N33 30 37.0 W105 48 28.2	424945 3708153
Lower Trailhead	N33 30 06.4 W105 47 16.2	426824 3707193

Links to Other Resources

[White Mountain Wilderness Trails-p4 \(7 MB\)](#)

[Church Mountain Topo Map](#)

[WMW Forest Service Resource](#)

[Nogal Canyon Trailhead \[1996 Information\]](#)

[My Life Outdoors-Nogal Peak](#)

Last Hiked: 11/11/2017

1/11/2018