

T46 Dry Canyon Trail

Smokey Bear Ranger District



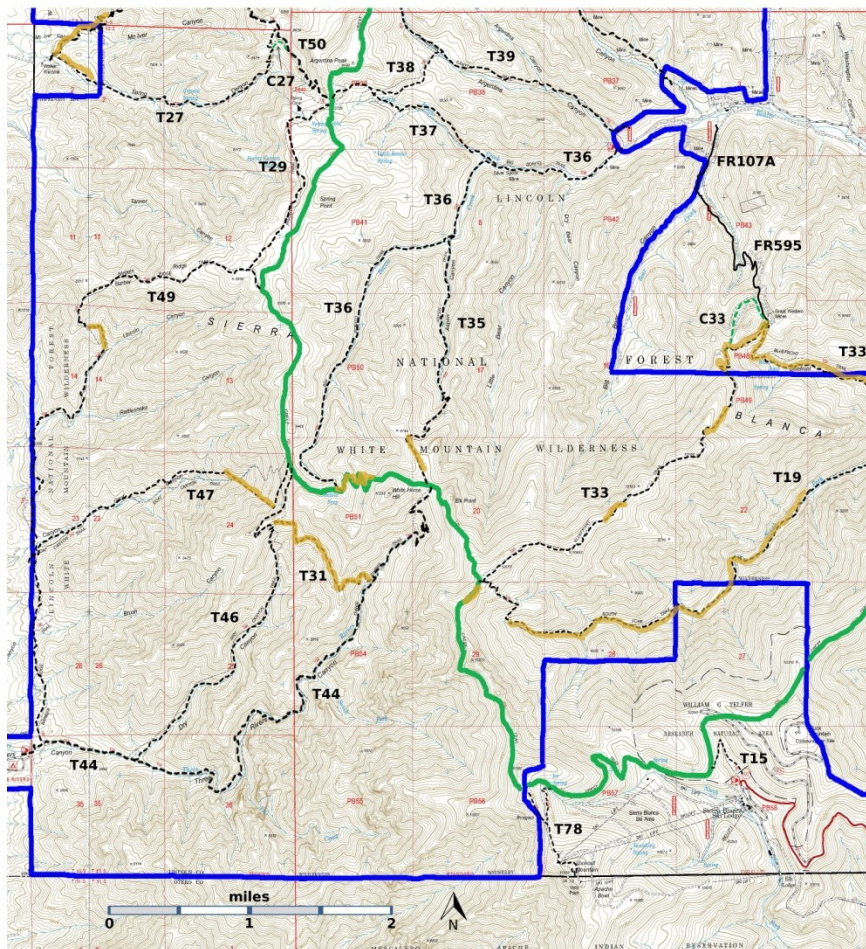
T46

GPS Track (as .GPX)

Left click to open in your browser; then save from browser.

| LENGT H | ELEVATION | DIFFICULTY | SCENERY |
|------------|--------------------------------------|------------|---------|
| 3.1 miles | 6720 - 9300 ft 2680 ft difference | Difficult | 3 |

| Allowed Usage | | | | |
|---------------|--|--|--|--|
| | | | | |
| | | | | |



[Link to map color/symbol codes](#)

CAUTION: T46 Dry Canyon Trail was severely damaged in the 2021 Three Rivers Fire. Repair will not begin until the rock slides and mudslides subside.

T15, T19 (partial), T27, T29, T31, T33 (partial), T35, T36, T38, T39, T44, T46, T47, T49, T50 (partial), and T78 are shown as labeled, black dashed lines on the map. The solid blue line is the border of the White Mountain Wilderness. The solid green line is T25 Crest Trail. Yellow over a trail indicates that that portion of the trail is intermittent or hard to follow. The map image may be downloaded through the White Mountain Wilderness link below. The image can then be expanded and/or manipulated at high resolution.

NOTE: T46 Dry Canyon Trail is shown incorrectly on current Forest Service maps. The junction with T44 is on the east side of a small drainage, not the west. The switchbacks are not correct on the Forest Service maps. The upper end of T46 does not descend to intersect T47 Goat Canyon Trail; rather, it continues, more or less level, to a junction with T25 Crest Trail.

DESCRIPTION: T46 Dry Canyon Trail is a lovely tough hike. From its junction with T44 Three Rivers Trail, T46 follows the drainage. The canyon narrows and cliffs can be seen on both sides. T46 crosses the drainage one last time and, through a series of switchbacks climbs up into an open meadow. One last switchback, at the end of the ridge, and T46 heads for its junction with T25.

T46 can also be a nice excursion hike from T25. Follow T46 for 0.8 miles, with little descent, around the end of the ridge to the first descending switchback. Enjoy the fine views into and across Dry Canyon.

ACCESS: The junction of T44 and T46 is 0.8 miles up T44 from its lower trailhead. The junction of The upper end of T46 makes a junction with T25 Crest Trail. The T46/T25 and T47/T25 junctions are about 20 yards apart. The view at the summit is spectacular, with Goat Canyon on the west and Bonito Canyon on the east!

GPS Coordinates for Key Points

| NAD83 | Lat/Lon hddd mm ss.s | UTM (13 S) |
|-------------------------|-----------------------------|-------------------|
| Junction of T44 and T46 | N33 24 06.8 W105 52 07.7 | 419208 3696178 |
| Junction of T46 and T25 | N33 25 49.5 W105 50 53.4 | 421154 3699327 |

Links to Other Resources

[White Mountain Wilderness Trails-p2 \(8 MB\)](#)

[Godfrey Peak Topo Map](#)

[Nogal Peak Topo Map](#)

[WMW Forest Service Resource](#)

[Three Rivers Trailhead](#) [1996 Information]

Last Hiked: 10/20/2015

1/14/2019