

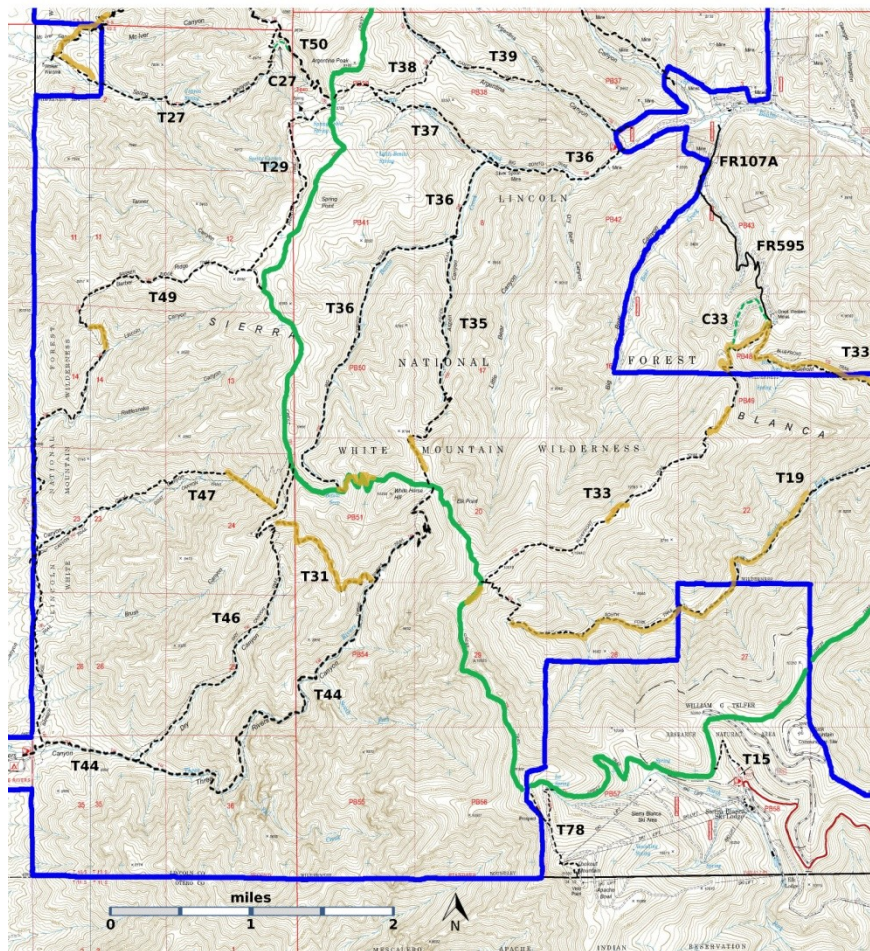
T44
Three Rivers Trail
Smokey Bear Ranger District



T44
 GPS Track (as .GPX)
 Left click to open in your browser; then save from browser.

LENGT H	ELEVATION	DIFFICULTY	SCENERY
6.1 miles	6440 - 9860 ft 3420 ft difference	Difficult	4

Allowed Usage				



[Link to map color/symbol codes](#)

CAUTION: T44 Three Rivers Trail was severely damaged in the 2021 Three Rivers Fire. Repair will not begin until the rock slides and mudslides subside.

T15, T19 (partial), T27, T29, T31, T33 (partial), T35, T36, T38, T39, T44, T46, T47, T49, T50 (partial), and T78 are shown as labeled, black dashed lines on the map. The solid blue line is the border of the White Mountain Wilderness. The solid green line is T25 Crest Trail. Yellow over a trail indicates that that portion of the trail is intermittent or hard to follow. The map image may be downloaded through the White Mountain Wilderness link below. The image can then be expanded and/or manipulated at high resolution.

DESCRIPTION: T44 (T46, T47, T49 accessible from T44), T53, and T23 (accessible from T25) are the only routes accessible from the west side of the White Mountain Wilderness.. T44 is one of the most varied trails in Lincoln National Forest. From the lower trailhead, good trail extends about 1.6 miles up canyon and is sporadic beyond that. The variety of vegetation and landforms is considerable. Several natural camping sites are scattered along the canyon bottom, including a significant, primitive campground at mile 3.7 from the lower trailhead. Here also is the mouth of Fall Creek that provides about a third of the water for Three Rivers during part of the year. Mature, stately, mixed conifers are abundant along the lower two-thirds of the path. There are at least 15 switchbacks and about 24 stream crossings (no bridges) along T44.

If accessed from the upper trailhead, there is a well-constructed trail with switchbacks. Open vistas are available until about one mile down canyon, near the beginning of Three Rivers stream.

ACCESS: To reach the lower trailhead for T44, begin in Tularosa where US54 separates from US70. Drive US54 north 16 miles to milepost 96. Go 0.6 mile more, and note a large Forest Service sign on the right indicating Petroglyphs Picnic Ground, White Mountain Wilderness and Three Rivers Campground. Turn right and follow County Road B030 (leads into County Road B036; also known as FR579), east 13.4 miles to its end in Three Rivers Campground at the T 44 trailhead.

For those wishing to hike down T44, two access routes are suggested:

(1) The upper T44 trailhead can be reached most quickly by hiking up from the end of FR107, Rio Bonito Road, via T36 for the first 1.5 miles. Take T35 for the next 2.4 miles to its common trailhead with T44 at T25; it is 6.1 miles down T 44 to Three Rivers Campground. Total walking distance is 10.0 miles one way. For those who plan to have someone pick them up at Three Rivers Campground, it is an 87 mile, one way drive from the upper end of FR107, via FR107, NM37, NM48, US70, US54, and FR579, to that campground! To find T36, consult that trail write-up.

(2) An alternative, yet more spectacular route for reaching the upper end of T44 is to begin from the lower T15 trailhead at the U-curve on NM532, at the gate to Ski Apache Ski Area. Take T15 for 0.6 mile to T25; turn left on T25 and hike 5.3 miles to the T44 trailhead. The route

crosses the highest elevation point of T25 at 11,200 feet, and passes along the least commonly used portion of the T25, yet provides some of the most splendid vistas found anywhere in Lincoln National Forest. *Be careful*; it is easy to lose the trail in a few locations. Grass may be tall enough to obscure the trail by lying over it. To stay on the trail, shuffle your feet to "feel" where the trail goes. To access T15, consult that trail write-up. Total hiking distance, including descent of T44, is 12.0 miles. Total driving distance between the T15 trailhead and the beginning of T44 at Three Rivers Campground is 85 miles via NM532, NM48, US70, US54, and FR579.

GPS Coordinates for Key Points

NAD83	Lat/Lon hddd mm ss.s	UTM (13 S)
Trailhead	N33 24 07.6 W105 52 57.4	418022 3696233
Junction of T44 and T25	N33 25 45.0 W105 49 48.6	422826 3699175

Links to Other Resources

[White Mountain Wilderness Trails-p2 \(8 MB\)](#)

[Godfrey Peak Topo Map](#)

[Nogal Peak Topo Map](#)

[WMW Forest Service Resource](#)

[Three Rivers Trailhead](#) [1996 Information]

Last Hiked: 7/8/2017

1/14/2019