

T43 Oak Ridge Trail

Smokey Bear Ranger District



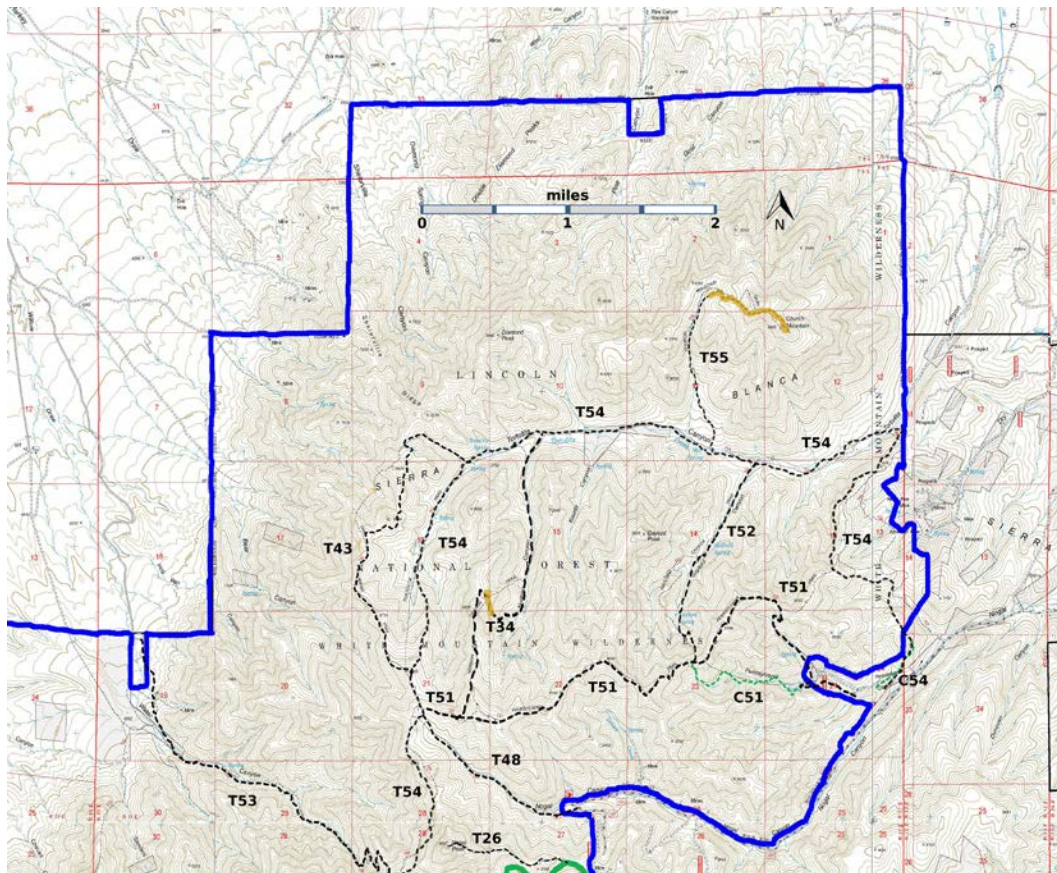
T43

GPS Track (as .GPX)

Left click to open in your browser; then save from browser.

LENGTH	ELEVATION	DIFFICULTY	SCENERY
2.5 miles	7780 - 8950 ft 830 ft difference	Difficult	2

Allowed Usage				



[Link to map color/symbol codes](#)

T26, T34, T43, T48, T51, T52, T53 (partial), T54, and T55 are shown as labeled, black dashed lines on the map. The solid blue line is the border of the White Mountain Wilderness. The solid green line is T25 Crest Trail.

CAUTION: T43 is shown incorrectly on many Forest Service maps.

DESCRIPTION: T43 branches off of the initial portion of T54, as it goes north. There is a fallen wooden sign at the point that T43 leaves T54. The first 0.1 mile of T43 passes through a grassy area, and the tread can be faint. Stay on the contour, pass to the high side of an isolated juniper tree, and look for a gap in the trees. Just beyond this gap, there is large cairn, which marks the descent down the ridge. About 0.3 miles further, T43 makes a short (20 feet) jog to the left and then continues along the ridge. We built a cairn at this point and put a dead tree across the straight ahead path.

T43 has multiple “hogbacks” before descending smoothly into Tortolita Canyon to meet T54. T43 is signed at the lower junction with T54.

ACCESS: From T54. Use T48 or T51 to reach T54.

GPS Coordinates for Key Points

NAD83	Lat/Lon hddd mm ss.s	UTM (13 S)
Junction of T43 and T54 (north)	N33 32 05.3 W105 48 04.4	425607 3710865
Junction of T43 and T54 (south)	N33 30 52.8 W105 48 29.0	424956 3708636

Links to Other Resources

[White Mountain Wilderness Trails-p4 \(7 MB\)](#)

[Church Mountain Topo Map](#)

[WMW Forest Service Resource](#)

Last Hiked: 11/11/2017

1/14/2019