

T40

Turkey Canyon Trail

Smokey Bear Ranger District



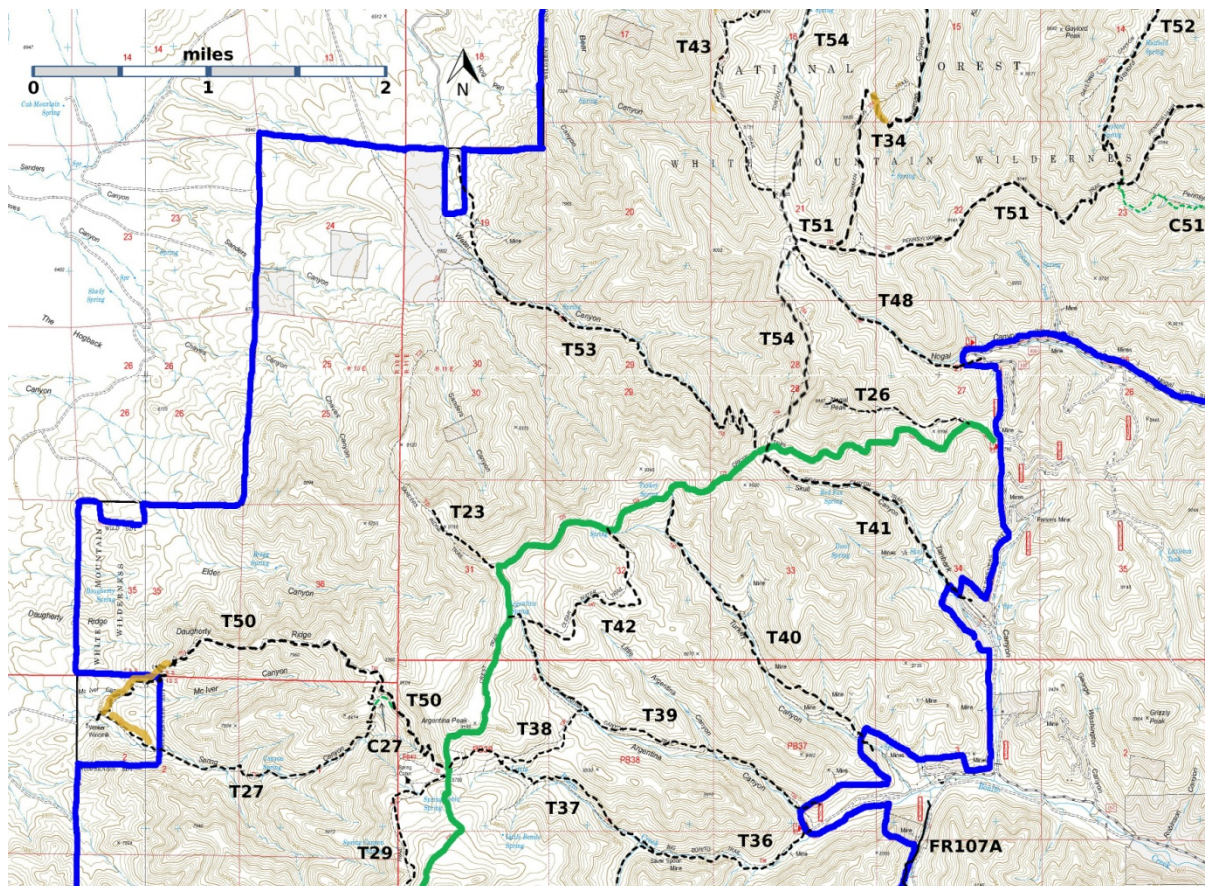
T40

GPS Track (as .GPX)

Left click to open in your browser; then save from browser.

LENGTH	ELEVATION	DIFFICULTY	SCENERY
1.6 miles	7940 - 9140 ft 1200 ft difference	Moderate	3

Allowed Usage				



[Link to map color/symbol codes](#)

T23, T26, T27, T29 (partial), T34 (partial), T36 (partial), T37, T38, T39, T40, T41, T42, T43 (partial), T48, T50, T51 (partial), T52 (partial), T53, and T54 (partial) are shown as labeled black dashed lines on the map. The solid blue line is the border of the White Mountain Wilderness. The solid green line is T25 Crest Trail. Yellow over a trail indicates that that portion of the trail is intermittent or hard to follow. The map image may be downloaded through the White Mountain Wilderness link below. The image can then be expanded and/or manipulated at high resolution.

DESCRIPTION: Named for the large number of turkeys originally found here, the lower end of T40 follows an old, easy grade road to about mile 1.5. It provided access to gold mines many decades ago. At mile 0.4 from the lower end is a very large Douglas-fir, five feet in diameter and estimated to be 300 years old. The tree is just 0.1 mile beyond a nice primitive camping spot at a stream crossing. The route passes through mainly forested areas with open under story and a few open areas. After mile 2.2, the trail steepens to about 30% gradient for its last 0.3 mile as the upper trailhead is approached. Turkey Canyon Creek flows intermittently for over two miles, through the lower end of the canyon. A few small springs are near the trail. Turkey Spring is in an enclosed area at the upper trailhead where T 40 joins T 25. The trail signs are located at the northeast corner of the corral. Tubs for watering riding stock are in place. If the year has been dry, the spring will not be running.

T40 and T41, including a portion of T 25 that connects their upper termini, plus 1.6 miles of road, make an ideal loop route of 6.4 miles. The easiest way to make this hike is to park off the road at the junction of FR107 and FR108. Hike up FR107 for 0.3 mile, passing through a riding stable area; continue another 0.2 mile to the signed T40 trailhead on the right. After taking T40 and reaching T25 in 2.5 miles, turn right at Turkey Springs and proceed 0.7 mile along T25 to the upper terminus of T41. Up to this point from the T40 trailhead, T25 passes through oak and locust thickets and crosses the crest of the White Mountains twice (highest elevation about 9,200 feet). Distant views are possible at a few locations. Follow T41 to its lower trailhead, in 1.6 miles, and then hike the 0.3 mile access road, FR108A, to its junction with FR108. Turn right and hike down canyon 0.8 mile to FR107, the parking site. Note: FR108A is not signed at its junction with FR108.

ACCESS:

To reach T40 from Smokey Bear Ranger District Office in Ruidoso, drive NM48 north 8.3 miles to NM37. Turn left and travel NM37 for 1.3 miles to FR107, Rio Bonito Road, signed Bonito Lake. Turn left and follow the narrow, paved, sometimes rough route past Bonito Lake and beyond the end of the pavement beyond the junction with FR108 at mile 7.1, through the riding stable in 0.3 miles, to the T40 junction just 0.2 mile beyond the stables. Park along FR107.

GPS Coordinates for Key Points

NAD83	Lat/Lon hddd mm ss.s	UTM (13 S)
Junction of T25 and T40	N33 29 27.1 W105 49 10.9	423852 3706007
Lower Trailhead	N33 27 59.3 W105 47 40.0	426178 3703284

Links to Other Resources

[White Mountain Wilderness Trails-p3 \(6 MB\)](#)

[Nogal Peak Topo Map](#)

[WMW Forest Service Resource](#)

Last Hiked: 11/5/2014

1/8/2018