

T38 Cut Across Trail

Smokey Bear Ranger District



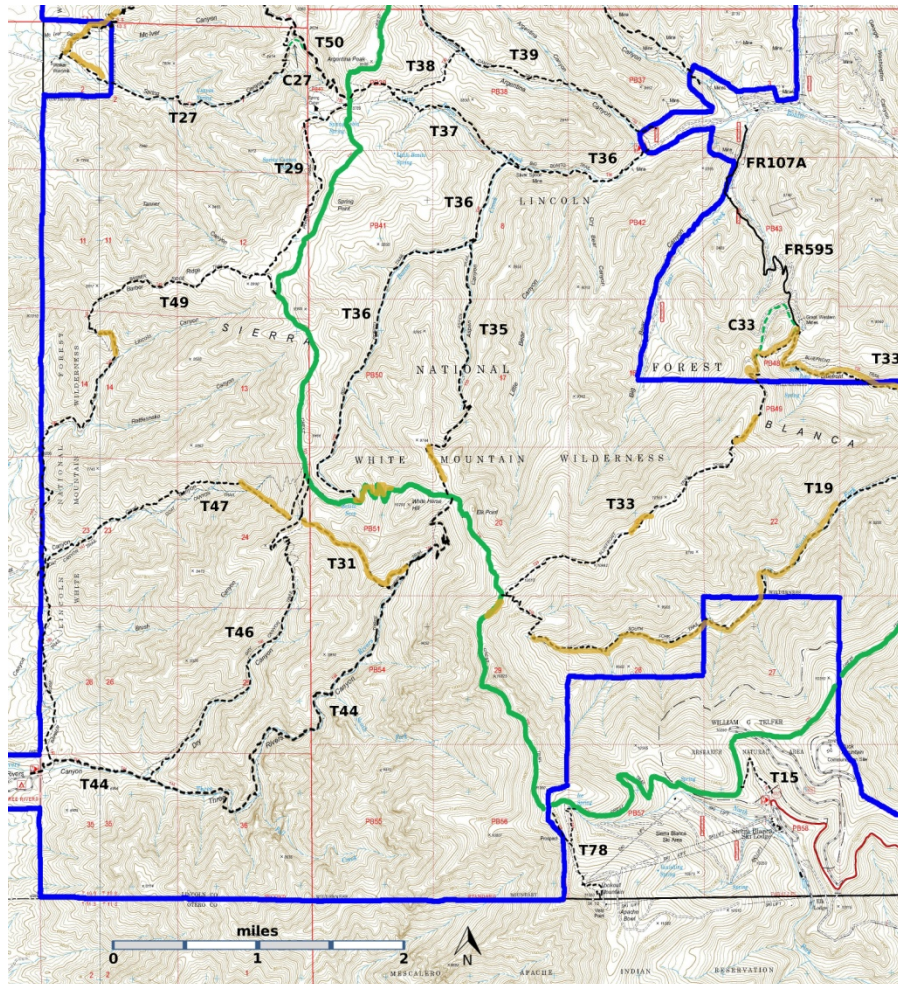
T38

GPS Track(as .GPX)

Left click to open in your browser; then save from browser.

LENGTH	ELEVATION	DIFFICULTY	SCENERY
0.9 miles	8450 - 8700 ft 250 ft difference	Easy	3

Allowed Usage				



[Link to map color/symbol codes](#)

T15, T19 (partial), T27, T29, T31, T33 (partial), T35, T36, T38, T39, T44, T46, T47, T49, T50 (partial), and T78 are shown as labeled, black dashed lines on the map. The solid blue line is the border of the White Mountain Wilderness. The solid green line is T25 Crest Trail. Yellow over a trail indicates that that portion of the trail is intermittent or hard to follow. The map image may be downloaded through the White Mountain Wilderness link below. The image can then be expanded and/or manipulated at high resolution.

DESCRIPTION: T38 crosses the ridge between Argentina and Little Bonito Canyons. The ridge is an especially scenic spot with a broad, open, and shaded area; perfect for a rest stop or picnic. Just beyond are incredible high mountain views toward the south and east. T38 can be part of a relatively short and interesting round trip of 5.0 miles. The least steep way is to hike T36 to T37 to T38, and return along T39.

ACCESS: T38 may be accessed from T37 or T39. To reach T37 or T39 from Smokey Bear Ranger District Office in Ruidoso, drive NM48 north 8.3 miles to NM37. Turn left and follow NM37 1.3 miles to FR107, Rio Bonito Road, signed Bonito Lake. Turn left and follow the narrow, paved, sometimes rough road past Bonito Lake, beyond the end of the pavement, through the riding stable area, and to the end of the road at mile 8.3. Corrals are available here for those who bring horses. The corral area is open for camping. T36 and T39 have a common lower trail head, but the signage can be confusing. The big yellow and brown sign for T36 is at the end of FR107, where it should be. The big yellow and brown sign for T39 is about 0.2 miles prior to the T36 sign, where it should not be. You may want to park in the open area near the T39 sign and walk to the T36 sign, where there is less room for parking. To add to the confusion, between the T39 sign and the T36 sign, along FR107, there is a small sign on the right for the T39 trailhead -- a case of providing signage for an informal trail. Ignore it.

To reach the south end of T38, hike T36 1.2 miles to its junction with T37. Hike T37 for 1.2 miles to its junction with T38. The junction of T37 with T25 is just 0.2 miles further. To reach the north end of T38, hike T39 1.6 miles to its junction with T38.

GPS Coordinates for Key Points

	Lat/Lon hddd mm ss.s	UTM (13 S)
Junction of T37 and T38 (south end of T38)	N33 28 04.1 W105 50 26.1	421892 3703466
Junction of T38 and T39 (north end of T38)	N33 28 21.1 W105 49 41.9	423038 3703981

Links to Other Resources

- [White Mountain Wilderness Trails-p2 \(8 MB\)](#)
- [Nogal Peak Topo Map](#)
- [WMW Forest Service Resource](#)
- [Argentina Trailhead](#) [1996 information]

Last Hiked: 9/17/2015

1/7/2018