

T37

Little Bonito Trail

Smokey Bear Ranger District



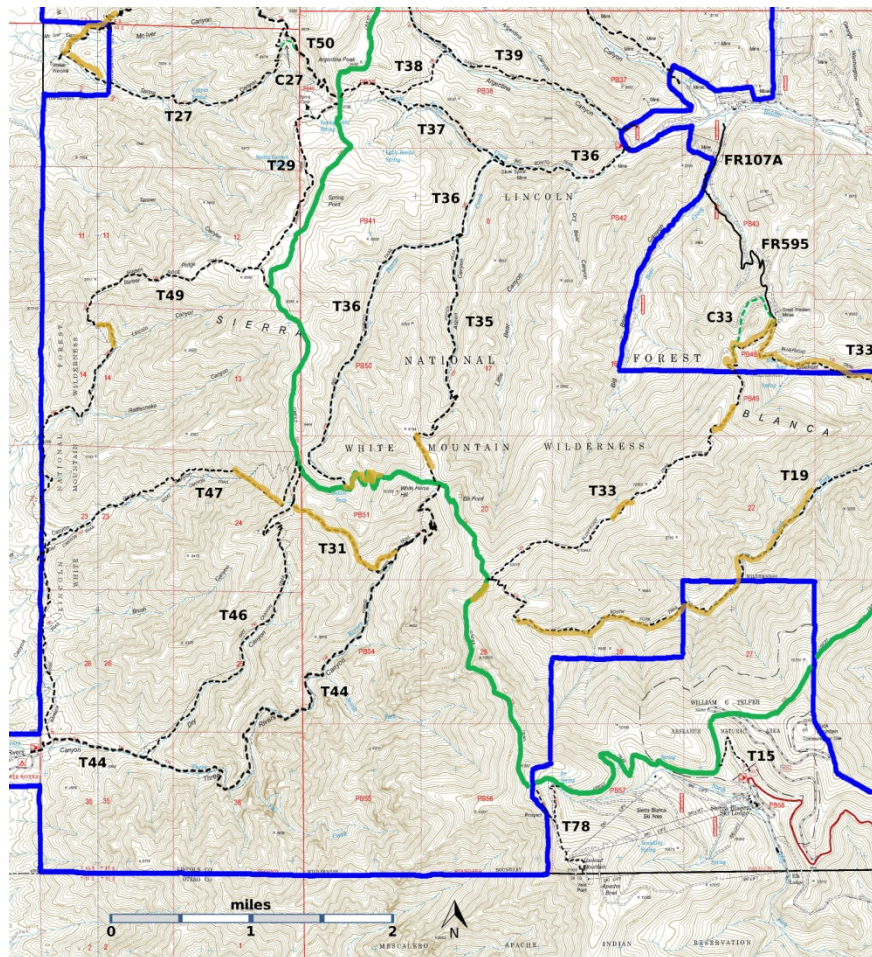
T37

GPS Track (as .GPX)

Left click to open in your browser; then save from browser.

| LENGTH | ELEVATION | DIFFICULTY | SCENERY |
|-----------|-------------------------------------|------------|---------|
| 1.4 miles | 8060 - 8780 ft 720 ft difference | Moderate | 3 |

| Allowed Usage | | | | |
|---------------|--|--|--|--|
| | | | | |
| | | | | |



[Link to map color/symbol codes](#)

T15, T19 (partial), T27, T29, T31, T33 (partial), T35, T36, T38, T39, T44, T46, T47, T49, T50 (partial), and T78 are shown as labeled, black dashed lines on the map. The solid blue line is the border of the White Mountain Wilderness. The solid green line is T25 Crest Trail. Yellow over a trail indicates that that portion of the trail is intermittent or hard to follow. The map image may be downloaded through the White Mountain Wilderness link below. The image can then be expanded and/or manipulated at high resolution.

DESCRIPTION: T37 is a nice trail for a one-day round trip to and from T25. T37 goes through an array of vegetation, including Ponderosa pine, oak thickets, aspen, and lush alpine wildflower meadows in season. It is a moderate grade and has no switchbacks. At mile 1.2, the trail intersects highly scenic T38, which along with T39, provides a round trip of 5.0 miles from the end of FR 107. From the junction of T37 with T38, T37 ends in 0.3 mile at T25, its lowest elevation on the crest of the White Mountains. From the common trailhead of T37 and T50, hike T50 for 0.4 mile down canyon for a superior view of the Tularosa Basin.

ACCESS: The lower end of T37 is accessed from T36. To reach the T36 trailhead from Smokey Bear Ranger District Office in Ruidoso, drive NM48 north 8.3 miles to NM37. Turn left and follow NM37 1.3 miles to FR107, Rio Bonito Road, signed Bonito Lake. Turn left and follow the narrow, sometimes rough, paved road past Bonito Lake, beyond the end of the pavement, through the riding stable area, and to the end of the road at mile 8.3. Corrals are available here for those who bring horses. Camping is also permitted. The signed trailhead for T36 is at the end of the road. Trailheads for T37 and T35 can be reached by going up T 36 for 1.2 and 1.5 miles, respectively.

GPS Coordinates for Key Points

| NAD83 | Lat/Lon hddd mm ss.s | UTM (13 S) |
|-------------------------|-----------------------------|-------------------|
| Junction of T25 and T37 | N33 28 04.5 W105 50 28.2 | 421653 3703458 |
| Junction of T36 and T37 | N33 27 44.5 W105 49 23.3 | 423508 3702850 |

Links to Other Resources

[White Mountain Wilderness Trails-p2 \(8 MB\)](#)

[Nogal Peak Topo Map](#)

[WMW Forest Service Resource](#)

[Argentina Trailhead](#) [1996 information]

Last Hiked: 9/25/2015

1/7/2018