

T36

Big Bonito Trail

Smokey Bear Ranger District



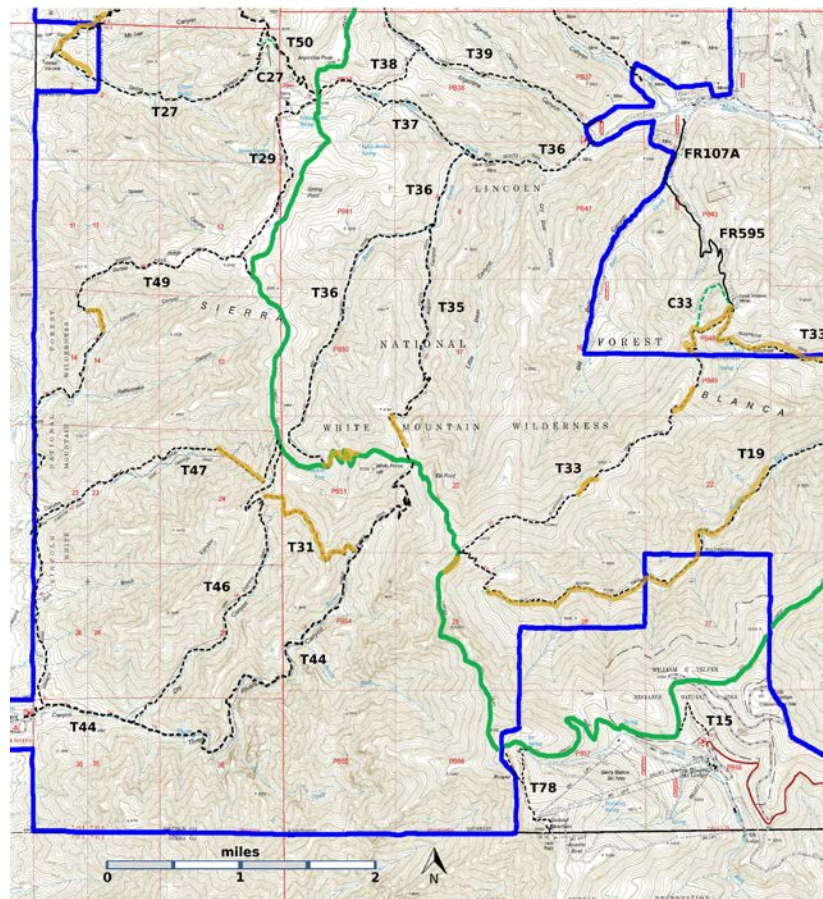
T36

GPS Track (as .GPX)

Left click to open in your browser; then save from browser.

LENGTH	ELEVATION	DIFFICULTY	SCENERY
4.6 miles	7820 - 9380 ft 1560 ft difference	Moderate	4

Allowed Usage				



[Link to map color/symbol codes](#)

T15, T19 (partial), T27, T29, T31, T33 (partial), T35, T36, T38, T39, T44, T46, T47, T49, T50 (partial), and T78 are shown as labeled, black dashed lines on the map. The solid blue line is the border of the White Mountain Wilderness. The solid green line is T25 Crest Trail. Yellow over a trail indicates that that portion of the trail is intermittent or hard to follow. The map image may be downloaded through the White Mountain Wilderness link below. The image can then be expanded and/or manipulated at high resolution.

DESCRIPTION: T36 is a nice trail for a one-day round trip to and from T25. T36 follows intermittent Bonito Creek and meets T25 at Bonito Seep, a distinctive, high country spring out in the open. En route to the spring, the trail passes through a number of small meadows with wildflowers and nice aspen groves. T36 crosses Bonito Creek seven times. In the Spring snowmelt may cause the creek to rise above the stepping stones. In the rainy season, thunderstorms can have a similar effect.

ACCESS: To reach the T36 trailhead from Smokey Bear Ranger District Office in Ruidoso, drive NM48 north 8.3 miles to NM37. Turn left and follow NM37 1.3 miles to FR107, Rio Bonito Road, signed Bonito Lake. Turn left and follow the narrow, sometimes rough, paved road past Bonito Lake, beyond the end of the pavement, through the riding stable area, and to the end of the road at mile 8.3. Corrals are available here for those who bring horses. Camping is also permitted. The signed trailhead for T36 is at the end of the road.

GPS Coordinates for Key Points

NAD83	Lat/Lon hddd mm ss.s	UTM (13 S)
Junction of T25 and T36	N33 25 43.9 W105 50 29.7	421765 3699148
Lower Trailhead	N33 27 48.3 W105 48 17.2	425216 3702953

Links to Other Resources

[White Mountain Wilderness Trails-2 \(8 MB\)](#)

[Nogal Peak Topo Map](#)

[WMW Forest Service Resource](#)

[Argentina Trailhead](#) [1996 information]

Last Hiked: 11/4/ 2015

1/14/2019