

T35 Aspen Trail

Smokey Bear Ranger District



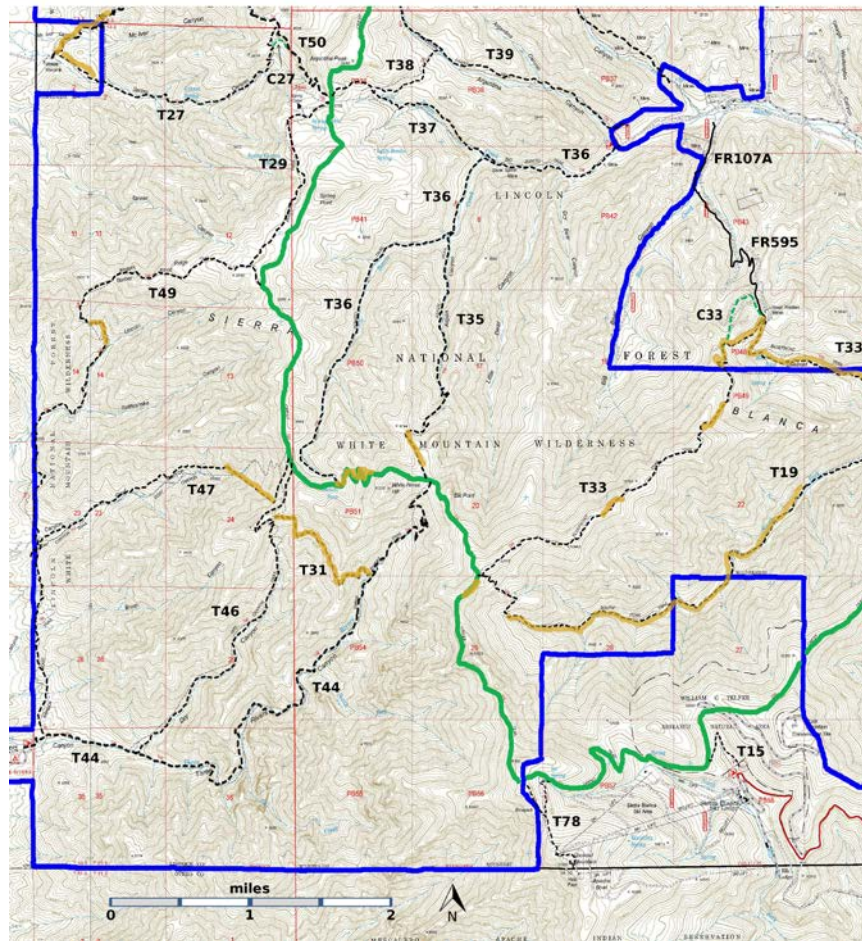
T35

GPS Track (as .GPX)

Left click to open in your browser; then save from browser.

LENGTH	ELEVATION	DIFFICULTY	SCENERY
2.3 miles	8220 - 9860 ft 1640 ft difference	Moderate	4

Allowed Usage				



[Link to map color/symbol codes](#)

T15, T19 (partial), T27, T29, T31, T33 (partial), T35, T36, T38, T39, T44, T46, T47, T49, T50 (partial), and T78 are shown as labeled, black dashed lines on the map. The solid blue line is the border of the White Mountain Wilderness. The solid green line is T25 Crest Trail. Yellow over a trail indicates that that portion of the trail is intermittent or hard to follow. The map image may be downloaded through the White Mountain Wilderness link below. The image can then be expanded and/or manipulated at high resolution.

DESCRIPTION: T35 is a nice trail for a one-day round trip to and from T25 [$2 \times (1.5 + 2.3) = 7.6$ miles round trip, 2040 ft elevation change!] T35 passes through a number of small meadows before entering aspen groves and follows an intermittent stream most of the way. As the path approaches T25, it passes through grass and herbs that are sometimes so tall and thick they obscure the trail. Landmarks to look for are White Horse Hill and Elk Point as one nears T25. Quoting from a Forest Service publication, "Many people hike this trail during the fall when the trees turn their many shades of buttery yellow to tangerine orange."

ACCESS: The lower end of T35 is accessed from T36. To reach the T36 trailhead from Smokey Bear Ranger District Office in Ruidoso, drive NM48 north 8.3 miles to NM37. Turn left and follow NM37 for 1.3 miles to FR107, Rio Bonito Road, signed Bonito Lake. Turn left and follow the narrow, sometimes rough, paved road past Bonito Lake, beyond the end of the pavement, through the riding stable area, and to the end of the road at mile 8.3. Corrals are available here for those who bring horses. Camping is also permitted. The signed trailhead for T36 is at the end of the road. Trailheads for T37 and T35 can be reached by going up T36 for 1.2 and 1.5 miles, respectively.

GPS Coordinates for Key Points

NAD83	Lat/Lon hddd mm ss.s	UTM (13 S)
Junction of T35 and T36	N33 25 44.9 W105 49 48.2	423111 3701984
Junction of T25 and T35	N33 25 44.9 W105 49 48.2	422835 3699171

Links to other Resources

[White Mountain Wilderness Trails-p2 \(8 MB\)](#)

[Nogal Peak Topo Map](#)

[WMW Forest Service Resource](#)

[Argentina Trailhead](#) [1996 information]

Last Hiked: 11/4/2015

1/14/2019