

# T34

## Norman Canyon Trail

### Smokey Bear Ranger District



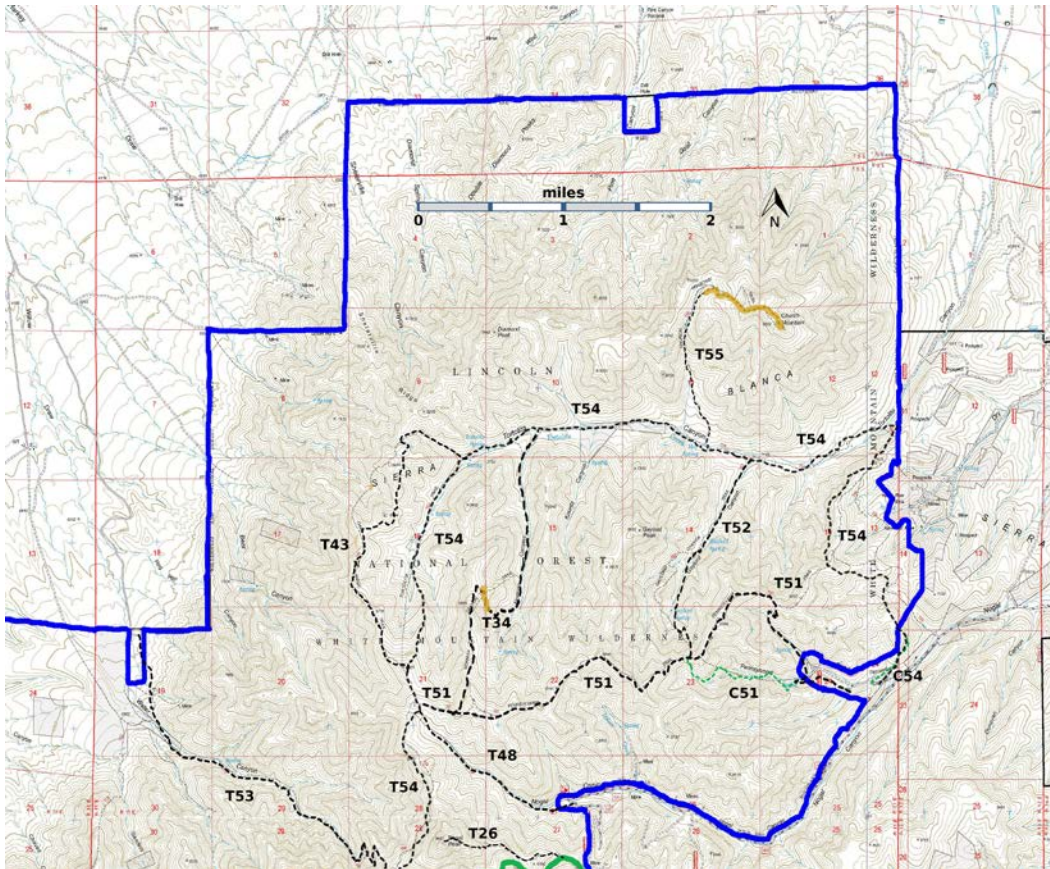
### T34

GPS Track (as .GPX)

Left click to open in your browser; then save from browser.

LENGTH	ELEVATION	DIFFICULTY	SCENERY
2.2 miles	7680 - 9200 ft 1520 ft difference	Difficult	1

Allowed Usage				



[Link to map color/symbol codes.](#)

T26, T34, T43, T48, T51, T52, T53 (partial), T54, and T55 are shown as labeled, black dashed lines on the map. The solid blue line is the border of the White Mountain Wilderness. The solid green line is T25 Crest Trail.

**CAUTION:** T34 is shown incorrectly on many Forest Service maps.

**DESCRIPTION:** T34 goes up Norman Canyon and, although the lower end threads through partially open under story, it soon passes along a narrow canyon bottom with considerable growth. It reappears on the ridge and terminates at its unsigned junction with T51.

The view along the ridge is spectacular, and is worth an “out and back “ hike. A series of rock cairns are now in place along the ridge.

As one hikes from the upper end of T34, along/near the ridge, the bowl at the upper end of Norman Canyon can be seen occasionally to the right. T34 makes a switchback to the right in order to descend from the ridge to this bowl. The switchback is marked by two small cairns near a small juniper tree. Pass between the cairns, turn right, and look for more cairns. This segment for the ridge to the bowl is intermittent, and there are animal trails in the area.

Near the junction of T34 and T54, T34 forks there is a carin at this point. The eastern fork is, by far, the easier trail to follow. If one hikes up T54 for 0.1 mile from the eastern junction of T34 and T54, there is a nice wooden sign for T34. However, there is no T34 tread to follow at this junction.

If one hikes up T34 from T54, there is a wooden sign in the bowl indicating that T34 turns right at the sign. We found no tread to the right. Hike past this sign to the end of the bowl and into the scrub to find the tread for T34.

**ACCESS:** The upper end of T34 makes a junction with T51. This junction may be reached in two ways: (1) hike 3.6 miles up T51 or (2) hike 1.4 miles up T48 to its junction with T51 and T54, and then hike 0.3 miles along T51 to its unsigned junction with T34. The second route starts 800 feet higher and is shorter.

The lower end of T34 makes a junction with T54. The T34 trailhead is approximately 2.9 miles up Tortolita Canyon from the point where T54, descending from the 900 foot high ridge, joins the old road in the bottom of Tortolita Canyon. See the write up for T54 for instructions to reach the signed lower trailhead of T54. Alternatively, one can use T48 to gain access to T54 on the ridge at the head of Nogal Canyon. See write-up for T 48 to reach this trail. Follow T54 north then east for 2.4 miles to the lower T34 trailhead.

Note: At one time, the upper end of T34 intersected T54 and the upper end of T51 branched off of T34. Now T51 intersects T54 and T34 branches off of T51.

## GPS Coordinates for Key Points

NAD83	Lat/Lon hddd mm ss.s	UTM (13 S)
Junction of T34 and T54	N33 32 04.8 W105 47 37.2	426309 3710844
Junction of T34 and T51	N33 30 37.1 W105 48 08.1	425489 3708150

## Links to Other Resources

[White Mountain Wilderness Trails-p4 \(7 MB\)](#)

[Church Mountain Topo Map](#) [Nogal Topo Map](#)

[WMW Forest Service Resource](#)

[Nogal Canyon Trailhead](#) [1996 Information]

Last Hiked: 4/26/2017

1/14/2019