

# T31 Maverick Trail

Smokey Bear Ranger District



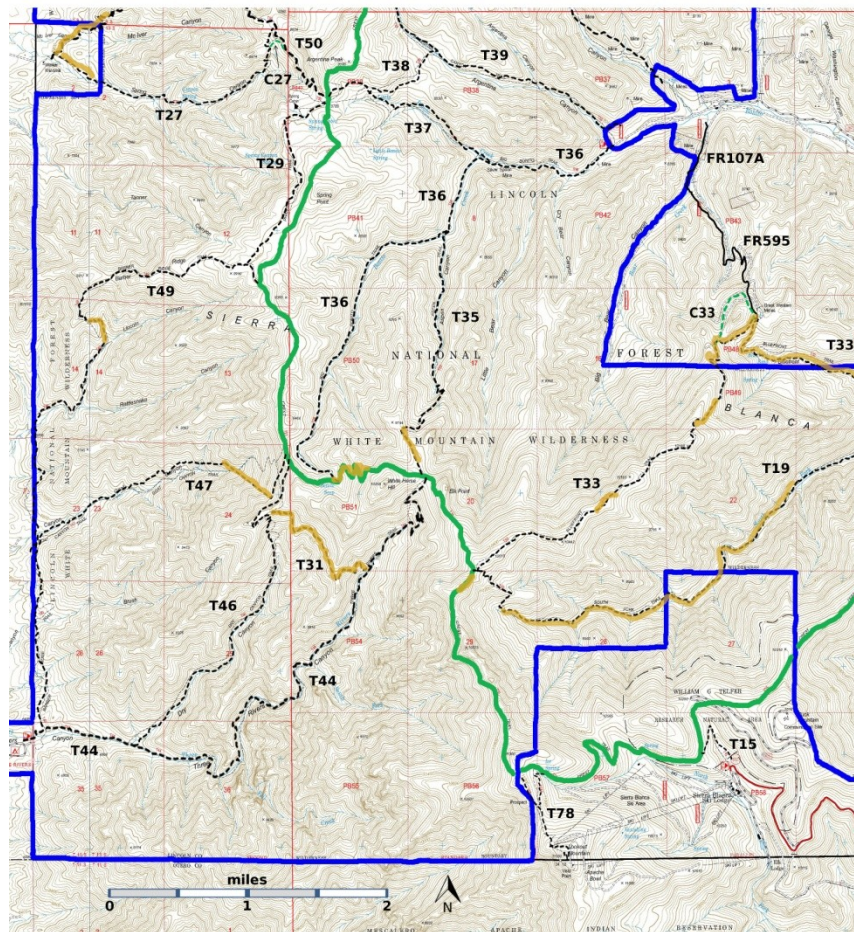
## T31

GPS Track (as .GPX)

Left click to open in your browser; then save from browser.

LENGT H	ELEVATION	DIFFICULTY	SCENERY
1.1 miles	9080 - 9260 ft 160 ft difference	Moderate See text	2

Allowed Usage				



[Link to map color/symbol codes](#)

**CAUTION: T31 Maverick Trail was severely damaged in the 2021 Three Rivers Fire.**

T15, T19 (partial), T27, T29, T31, T33 (partial), T35, T36, T38, T39, T44, T46, T47, T49, T50 (partial), and T78 are shown as labeled, black dashed lines on the map. The solid blue line is the border of the White Mountain Wilderness. The solid green line is T25 Crest Trail. Yellow over a trail indicates that that portion of the trail is intermittent or hard to follow. The map image may be downloaded through the White Mountain Wilderness link below. The image can then be expanded and/or manipulated at high resolution.

**DESCRIPTION:**

T31 is not in the 2002 Edition of Trail Guide: Lincoln National Forest, and it is not shown on the topographic maps. It is described in the Tree Rivers Trailhead link below with the sentence “The bad news is that the trail does not exist anymore.”

T44 Three Rivers Trail and T46 Dry Canyon Trail are probably old cattle trails. In that case, T31 would have been a crossover trail from T46 to T44, for use when the creek in T44 is high, i.e., in the spring when it is time to move cattle from lower winter pastures to the high pastures. We worked with Google Earth to design low gradient paths to connect the two trailheads and then hiked the best design. In the vicinity of the saddle we found clear deep tread. To the west of the saddle, there was little in the way of established trail, but it was an easy hike through grassy, burned-over ponderosa forest. To the east of the saddle there were multiple animal trails – but no “this is it” trail -- and a lot of brush.

At the west trailhead T46 ascending makes a sharp switchback to the left. The east trailhead has no distinguishable features. Hint: hike T31 from west to east. For T31 plan on a cross country “not much tread, no cairns, no blazes” hike. Download the T31 gpx track and use it as your guide.

**ACCESS:** The junction of T31 and T44 is 0.7 miles down from the junction of T25 and T44. The junction of T31 and T46 is 0.5 miles down from the junction of T25 and T46.

**GPS Coordinates for Key Points**

NAD83	Lat/Lon hddd mm ss.s	UTM (13 S)
Junction of T31 and T46	N33 25 34.5 W105 50 57.8	421036 3698865
Junction of T31 and T44	N33 25 21.4 W105 50 07.9	422322 3698453

**Links to Other Resources**

[White Mountain Wilderness Trails-p2 \(8 MB\)](#)

[Godfrey Peak Topo Map](#)

[Nogal Peak Topo M](#)

[WMW Forest Service Resource](#)

[Three Rivers Trailhead](#) [1996 Information]

Last Hiked: 5/19/2018

1/13/2019