

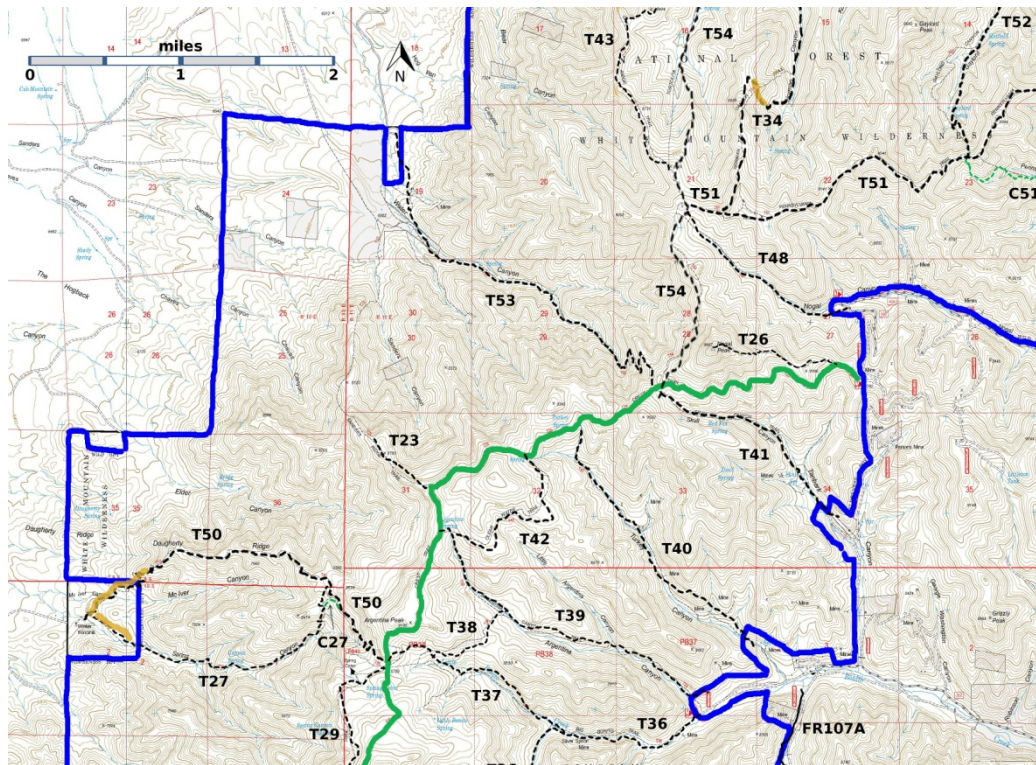
T26
Nogal Peak Trail
Smokey Bear Ranger District



T26
 GPS Track (as .GPX)
 Left click to open in your browser; then save from browser.

LENGTH	ELEVATION	DIFFICULTY	SCENERY
1.0 miles	8860 - 9920 ft 1060 ft difference	Difficult	4

Allowed Usage				



[Link to map color/symbol codes](#)

T23, T26, T27, T29 (partial), T34 (partial), T36 (partial), T37, T38, T39, T40, T41, T42, T43 (partial), T48, T50, T51 (partial), T52 (partial), T53, and T54 (partial) are shown as labeled black dashed lines on the map. The solid blue line is the border of the White Mountain Wilderness. The solid green line is T25 Crest Trail.

DESCRIPTION: T26 generally follows a ridge toward the summit of Nogal Peak. The path, either in the open or in oak scrub, is generally visible. Conditioned hikers should allow two hours to reach the summit from the T25 trailhead at FR108. In the first 0.7 miles, the trail ascends 400 ft; in the remaining 0.3 miles -- to reach the summit of Nogal peak -- it ascends 650 ft. *Those who have health problems should not attempt this trail.*

About 0.3 miles from the summit, T26 curves to the left and then makes a sharp right turn toward the summit. The more visible path is straight ahead (a side trail with lovely views), but a line of rocks across T26 should help the hiker to find this turn.

Breathtaking 360-degree views await the exhausted hiker on the summit. Landmarks include much of the White Mountain Wilderness, Monjeau Peak, Sierra Blanca Peak, Tularosa Basin and the White Sands, Carrizozo, Carrizo Peak, Capitan Mountains, and much more. Wildflowers are abundant in season; at least 50 species may be present. In Smokey Bear Ranger District, this is the shortest trail from a road to a grand, 360- degree vista, except from Monjeau Peak.

ACCESS: See the T25 write-up to reach its northeastern trailhead from FR108. From the T25 trailhead, hike 0.3 mile along T25 to the signed junction with T26. Distance from FR108 to the summit is 1.3 miles.

GPS Coordinates for Key Points

NAD83	Lat/Lon hddd mm ss.s	UTM (13 S)
Summit of Nogal Peak	N33 29 50.7 W105 48 12.2	425373 3706722
End of T26	N33 29 51.2 W105 47 54.7	425825 3706734
Junction of T25 and T26	N33 29 46.1 W105 47 16.1	426820 3706569

Links to other Resources

[White Mountain Wilderness Trails - p3 \(6 MB\)](#)

[Nogal Peak Topo Map](#)

[WMW Forest Service Resource](#)

[Crest Nogal Peak Trailhead](#) [1996 Information]

Last Hiked: 11/1/2014

1/11/2018