

T24 Dry Mills Trail

Smokey Bear Ranger District



T24

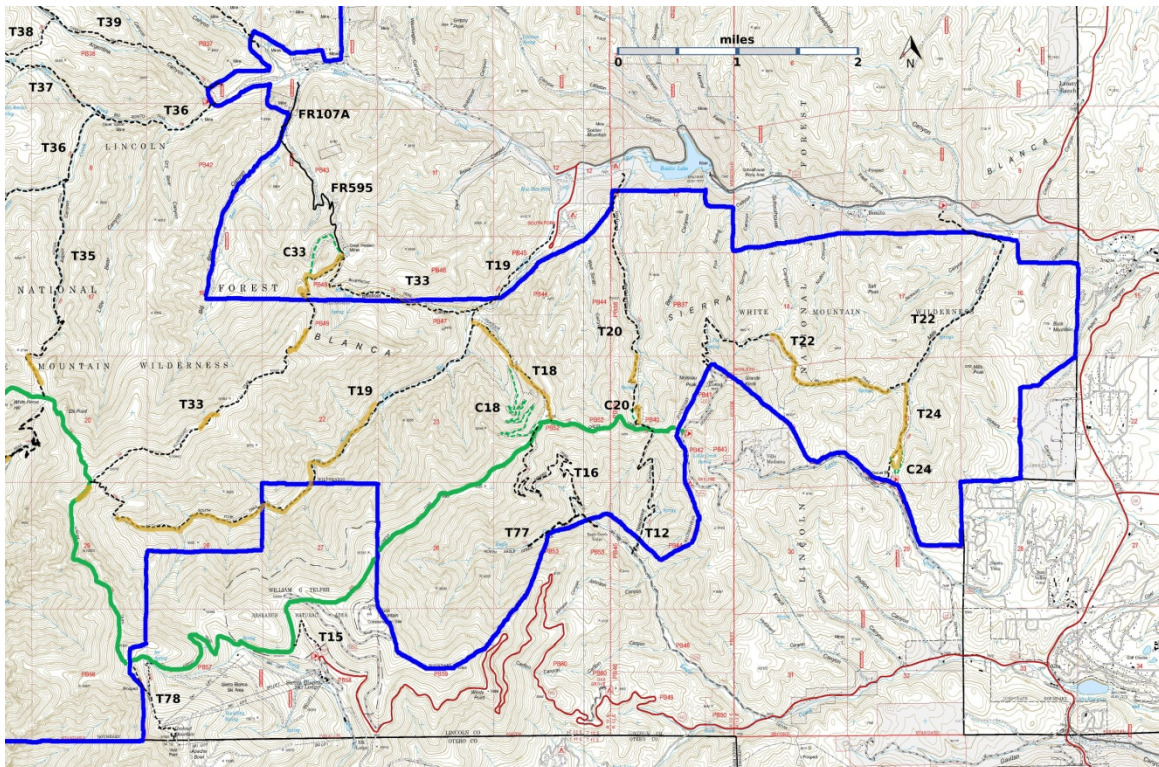
GPS Track (as .GPX)

Left click to open in your browser; then save from browser.

T24 is now open.

LENGTH	ELEVATION	DIFFICULTY	SCENERY
0.9 miles	7500 -7920 ft 420 ft difference	Moderate	1

Allowed Usage				



[Link to map color/symbol codes](#)

T12, T15, T16, T18, T19, T20, T22, T24, T33, T35, T36 (partial), T37 (partial), T38, T39 (partial), T77, and T78 are shown as black dashed lines on the map. The solid blue line is the border of the White Mountain Wilderness. The solid green line is T25 Crest Trail. Yellow over

a trail indicates that that portion of the trail is intermittent or hard to follow. The map image may be downloaded through the White Mountain Wilderness link below. The image can then be expanded and/or manipulated at high resolution

DESCRIPTION: This trail provides a low elevation connection between FR117 and T22. Because there is no visible tread on the lower portion of T24, it is recommended that one hike T24 from the upper end. From FR117, a hike of 0.2 miles along a good trail brings one to a ridge and a sobering view of the devastation caused by the 20102 Little Bear fire. There are no live trees to be seen – reseeding and reforestation will take a long time.

From this point, the route shown on the Forest Service maps takes one on a difficult hike down a very steep slope with loose dirt (and poor footing). It is recommended that one turn right at this point and hike about 0.1 miles along the ridge to the head of a drainage [route C24-LM.gpx below, shown as a green dashed line on the map]. Follow this drainage, using it sometimes as a path and sometimes as a guide, to the junction of T22 and T24. There are many fallen trees along the way. Before the 2012 fire, the lower portion of T22 was on the left (west) side of the drainage, but there is very little tread now.

In order to hike up T24 one must find the two cairns that mark the unsigned lower trailhead, hike along the drainage and take the left fork when the drainage splits in order to avoid the steep climb across loose dirt.

ACCESS: To reach the upper trailhead for T24, make use of FR117. A high clearance vehicle is recommended and, if the road is wet, a 4-wheel drive vehicle may be useful. From Smokey Bear Ranger District Office in Ruidoso, drive New Mexico NM48 north 4.2 miles to the junction of NM532, Ski Run Highway. Turn left on NM532, and follow the pavement 0.9 mile. Turn right on FR117, Monjeau Lookout Road, and drive this largely graveled route 1.5 miles. The signed trailhead for T24 is on the right in the trees.

To reach the lower trailhead for T24, hike 2.2 miles up T22 from its lower trailhead to two cairns, just past a sandy-bottomed drainage. There is no T24 sign and no visible tread at this junction.

GPS Coordinates for Key Points

NAD83	Lat/Lon hddd mm ss.s	UTM (13 S)
Upper Trailhead	N33 25 09.3 W105 42 14.9	434534 3697989
Lower Trailhead	N33 25 51.8 W105 42 04.9	434809 3699132

Links to Other Resources

[C24-LM.gpx](#)

[White Mountain Wilderness Trails-p1 \(11 MB\)](#)

[Burned Trails Map \(34 MB\)](#)

[Angus Topo Map](#)

[WMW Forest Service Resource](#)
[Mills Trailhead](#) [1996 Information]

Last Hiked: 5/14/2016

2/7/2021