

T23

Sanders Ridge Trail

Smokey Bear Ranger District



T23

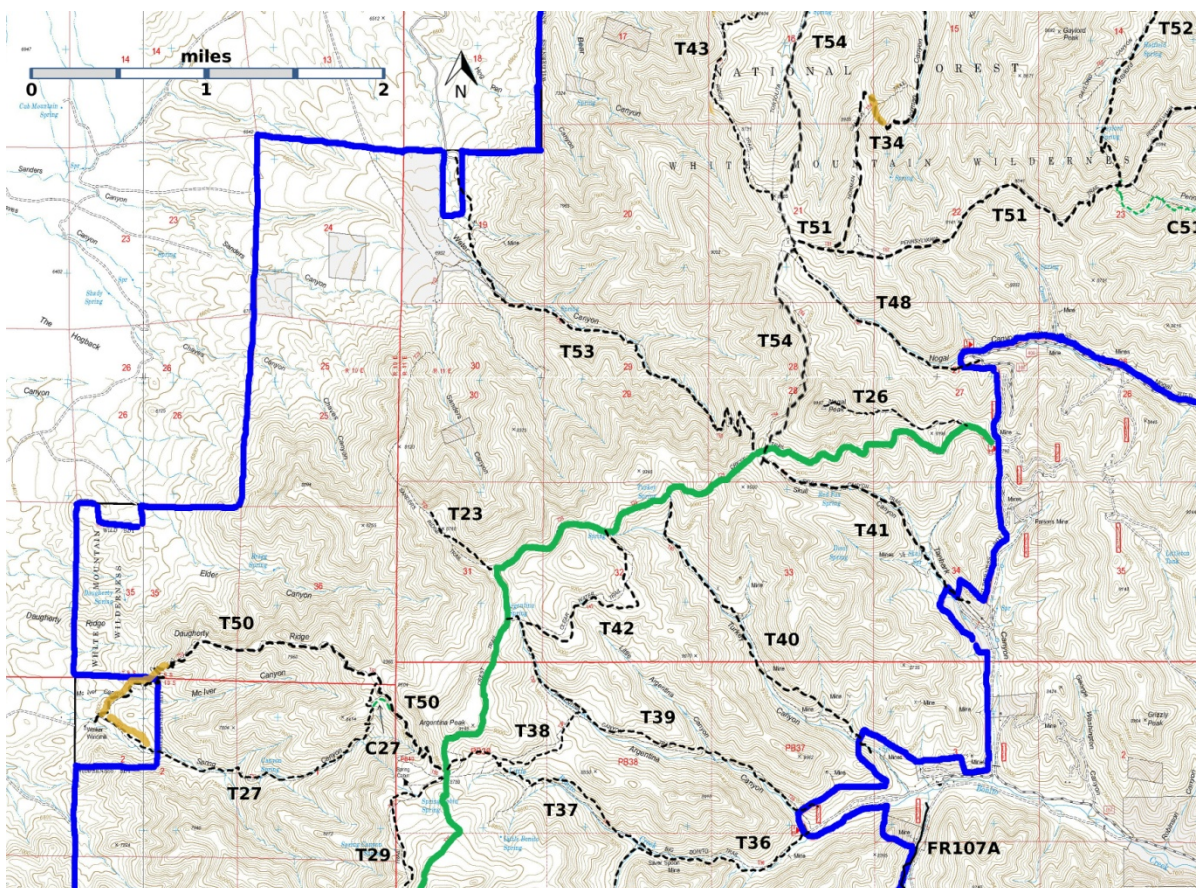
GPS Track (as .GPX)

Left click to open in your browser; then save from browser.

See CAUTION.

LENGTH	ELEVATION	DIFFICULTY	SCENERY
2.5 miles See Text	7020 - 8960 ft 1940 ft difference	Moderate	2

Allowed Usage				



[Link to map color/symbol codes](#)

T23, T26, T27, T29 (partial), T34 (partial), T36 (partial), T37, T38, T39, T40, T41, T42, T43 (partial), T48, T50, T51 (partial), T52 (partial), T53, and T54 (partial) are shown as labeled black dashed lines on the map. The solid blue line is the border of the White Mountain Wilderness. The solid green line is T25 Crest Trail. Yellow over a trail indicates that that portion of the trail is intermittent or hard to follow. The map image may be downloaded through the White Mountain Wilderness link below. The image can then be expanded and/or manipulated at high resolution.

CAUTION: Only the upper 0.3 miles of T23 are a reasonable trail for hiking. The remainder of the hike requires bushwhacking across steep terrain.

DESCRIPTION: Forest Service topo maps show that T23 begins at T25 and runs along Sander's Ridge to the base of the mountains. From the upper end of T23, an unsigned junction with T25, the first 0.3 miles of T23 provide a nice "out-and-back" hike along a ridge that narrows to about 6' at its western end. The Lincoln National Forest has very "vertigo" hikes and this is a nice short one. However, the ridge ends at a cliff, with no viable hike down. It is possible to reach the base of the mountains, but doing so requires OYB ("on your bottom") scrambles, avoiding cliffs, bushwhacking up and down through steep terrain, and probably use of GPS (with topo map downloaded) to reach the road that leads to T53 Water Canyon trail.

The GPS track provided on the web site is for the upper 0.3 miles only.

ACCESS: To access the upper trailhead from the junction of T25 with T40 Turkey Canyon Trail, hike 1.4 miles SW along T25 to the unsigned junction of T25 and T23. For access to T40, see its write-up.

Access to the lower trailhead – wherever it is --requires crossing private property.

GPS Coordinates for Key Points

NAD83	Lat/Lon hddd mm ss.s	UTM (13 S)
Junction of T23 and T25	N33 29 03.8 W105 50 16.4	422156 3705304
End of T23 at cliff (0.3 miles)	N33 29 08.6 W105 50 31.2	421776 3705457

Links to Other Resources

[White Mountain Wilderness Trails- p3 \(6 MB\)](#)
[Church Mountain Topo Map](#)
[Nogal Peak Topo Map](#)
[WMW Forest Service Resource](#)

Last Hiked: 11/8/2014

1/8/2018