

T20
Rodamaker Canyon Trail
Smokey Bear Ranger District

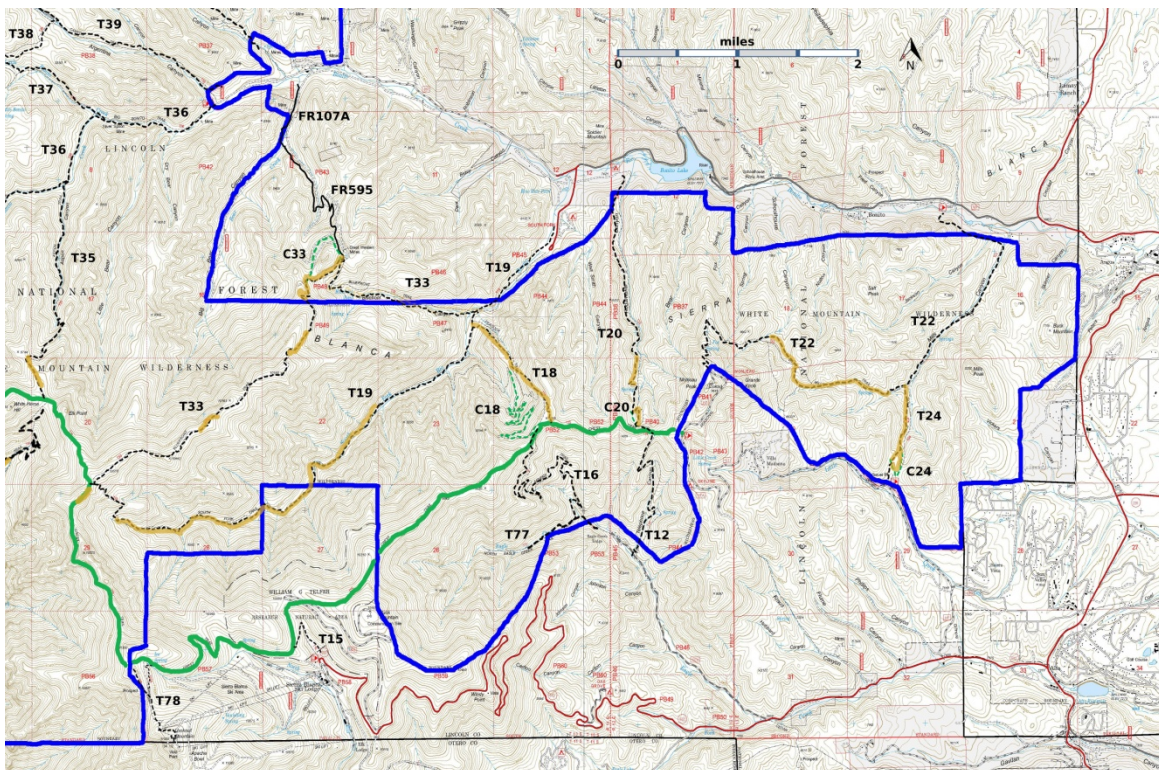


T20
 GPS Track (as .GPX)
 Left click to open in your browser; then save from browser.

T20 is now open.

LENGTH	ELEVATION	DIFFICULTY	SCENERY
2.5 miles	7420 - 9000 ft 1580 ft difference	Moderate	3

Allowed Usage				



[Link to map color/symbol codes](#)

T12, T15, T16, T18, T19, T20, T22, T24, T33, T35, T36 (partial), T37 (partial), T38, T39 (partial), T77, and T78 are shown as black dashed lines on the map. The solid blue line is the border

of the White Mountain Wilderness. The solid green line is T25 Crest Trail. Yellow over a trail indicates that that portion of the trail is intermittent or hard to follow. The map image may be downloaded through the White Mountain Wilderness link below. The image can then be expanded and/or manipulated at high resolution.

DESCRIPTION: The T12 Telephone Canyon Trail and T20 Rodemaker Canyon Trail form one continuous path and are joined on the ridge where T25 crosses them. At this common junction, vistas are spectacular and encompass a large portion of the White Mountain Wilderness! If you walk from one trail to the other, it is suggested that T12 be ascended and T20 be descended, due to the steepness and lack of a clear tread of the latter. The lower end of T12 begins in a recreation residential tract where privately owned homes are on public land. No camping is permitted there.

From the upper trailhead of T20, no tread is visible in the alpine meadow. Walk from the T20/T25 junction toward a large isolated rock (approximately a 3 foot cube). From that rock walk toward the upper end of the drainage and follow its left (west) side. A cairn with a stick in it will come in to view along with modest tread. Follow this drainage all the way to the lower trailhead at the Westlake Campground. The trail moves from one side of the drainage to the other, and sometimes seems to be in the drainage itself. Once you reach an old miner's road, the trail stays on the left (west) side of the drainage.

The difficulty in hiking up T20 is finding the correct drainage (out of three) as one nears the upper end. Look for a meadow on the right and a cairn in the meadow (Cairn 3, see GPS coordinates below).

T20 is steep along its upper section. Views of subalpine meadows are outstanding. The trail moderates in descent as it begins to pass along an intermittent creek and through a treed corridor with open understory. Several oak groves, large and quite old, are present. There are numerous fallen trees across the lower part of the trail. Forest Service maps show a long loop – to lessen the gradient – starting near the point where the drainage merges into the meadow. I found no trace of it in the meadow grass.

ACCESS: To access the lower end of T12 from Smokey Bear Ranger District Office in Ruidoso, drive NM48 north 4.2 miles to the junction of NM532 Turn left and follow paved NM532 for 2.5 miles to the junction of Forest Road FR127A, Eagle Creek Road. Turn right and drive the largely graveled and narrow FR127 for 1.4 miles to the locked gate to the Eagle Creek area. Park and hike 0.5 miles to the trailhead, marked by a T12 sign near the Eagle Creek Summer Home Association building

To locate the lower end of T20 from Smokey Bear Ranger District Office in Ruidoso, drive NM48 north 8.3 miles to the junction of NM37. Turn left and follow NM37 for 1.3 miles to FR107, Rio Bonito Road. Turn left (signed Bonito Lake) and follow the narrow two-lane pavement past Bonito Lake to a main road junction with a sign indicating "Westlake Campground 1/8 mile." Turn left and drive to the Westlake Campground entrance. The trailhead is 0.4 mile beyond the entrance, at the far end of a campground, owned and operated by the City of Alamogordo. If you drive through the campground to the trailhead, a fee may be charged, but you may park for free outside the campground and walk to the trailhead.

To reach T20 from its junction with T25, Crest Trail, drive NM532 for 0.9 mile from the intersection of NM532 and NM48 to the junction of FR 117, Monjeau Lookout Road, and turn right. Follow this mostly graveled route 5.0 miles to a junction on the left, a short road to the T25 trailhead. Hike T25 for 0.3 mile to the junction with T20.

GPS Coordinates for Key Points

NAD83	Lat/Lon hddd mm ss.s	UTM (13 S)
Junction of T20 and T25	N33 25 31.8 W105 44 21.8	431263 3698703
Cairn 1	N33 25.869 W105 44.510	431039 3699333
Lower Trailhead	N33 27 19.3 W105 44 43.1	430737 3702018

Links to Other Resources

[White Mountain Wilderness Trails-p1 \(11 MB\)](#)

[Burned Trails Map \(34 MB\)](#)

[Angus Topo Map](#)

[WMW Forest Service Resource](#)

Last Hiked: 5/23/2016

2/7/2021