

T16
Miner's Road Trail
Smokey Bear Ranger District



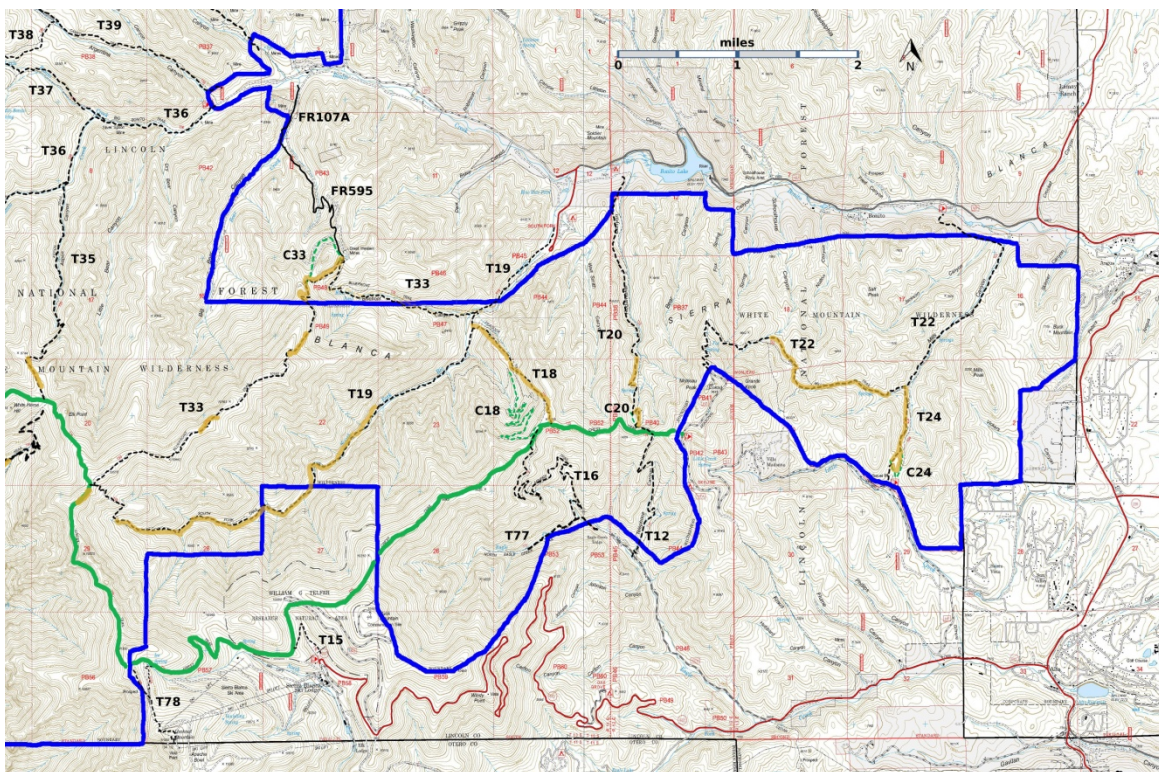
T16
 GPS Track (as .GPX)

Left click to open in your browser; then save from browser.

T16 is now open.

LENGTH	ELEVATION	DIFFICULTY	SCENERY
2.9 miles	8160 - 9200 ft 1040 ft difference	Difficult	2

Allowed Usage				



[Link to map color/symbol codes](#)

T12, T15, T16, T18, T19, T20, T22, T24, T33, T35, T36 (partial), T37 (partial), T38, T39 (partial), T77, and T78 are shown as black dashed lines on the map. The solid blue line is the border of the White Mountain Wilderness. The solid green line is T25 Crest Trail. Yellow over

a trail indicates that that portion of the trail is intermittent or hard to follow. The map image may be downloaded through the White Mountain Wilderness link below. The image can then be expanded and/or manipulated at high resolution.

DESCRIPTION: T16 Miner's Road Trail provides a near-constant grade from North Eagle Creek to the crest at T25 Rim Trail. Although there are many downed trees along the way, the old road is easy to follow. There are many berms across the old road, and crossing these can be tiresome. At a few of the switchbacks, there are long stems, and it is possible to miss the switchback and mistakenly hike out the stem. Most of these switchbacks also have a cairn to remind hikers to take the switchback turn. Because hikers must leave their vehicle at the locked gate, the hike is 1.2 miles longer than the actual T16 distance. Total distance $2.9 + 1.2 = 4.1$ miles. For a nice 7.5 miles loop hike, take T16 to T25 Crest Trail and follow it 1.2 miles east to the upper T12 Telephone Canyon trailhead (signed). Hike down T12 and return to your car through the Eagle Creek residential area. Note: Because of the lack of signage at the T16/T25 junction, it is probably better to hike this loop as T16 up and T12 down.

Although the Forest Service rates T16 as difficult, I would rate it as moderate.

ACCESS: To access the lower end of T16 from Smokey Bear Ranger District Office in Ruidoso, drive NM48 north 4.2 miles to the junction of NM532, Ski Run Highway. Turn left and follow paved NM532 for 2.5 miles to the junction of Forest Road FR127A, Eagle Creek Road. Turn right and drive the largely graveled and narrow FR127 for 1.4 miles to the locked gate to the Eagle Creek area. Park and hike for 0.8 miles to the trailhead for T77 near Eagle Creek Lodge. Hike for 0.4 miles up T77 to the lower trailhead for T16.

To reach T16 from its junction with T25, Crest Trail, drive NM532 for 0.9 mile from the intersection of NM532 and NM48 to the junction of FR117, Monjeau Lookout Road, and turn right. Follow this mostly graveled route 5.0 miles to a junction on the left, a short road to the T25 trailhead. Hike T25 for 1.6 mile to the (unsigned) junction with T16. An old mining road crosses T25 just before T25 makes a sharp rise to go up hill. T16 leads downhill to the left.

GPS Coordinates for Key Points

NAD83	Lat/Lon hddd mm ss.s	UTM (13 S)
Junction of T16 and T25	N33 25 28.7 W105 45 25.7	429612 3698620
Lower Trailhead	N33 24 52.2 W105 45 09.4	430025 3697494

Links to Other Resources

[White Mountain Wilderness Trails-p1 \(11 MB\)](#)

[Burned Trails Map \(34 MB\)](#)

[Nogal Topo Map](#)

[WMW Forest Service Resource](#)

Last Hiked: 5/17/2016

2/7/2021