

T15 Scenic Trail

Smokey Bear Ranger District



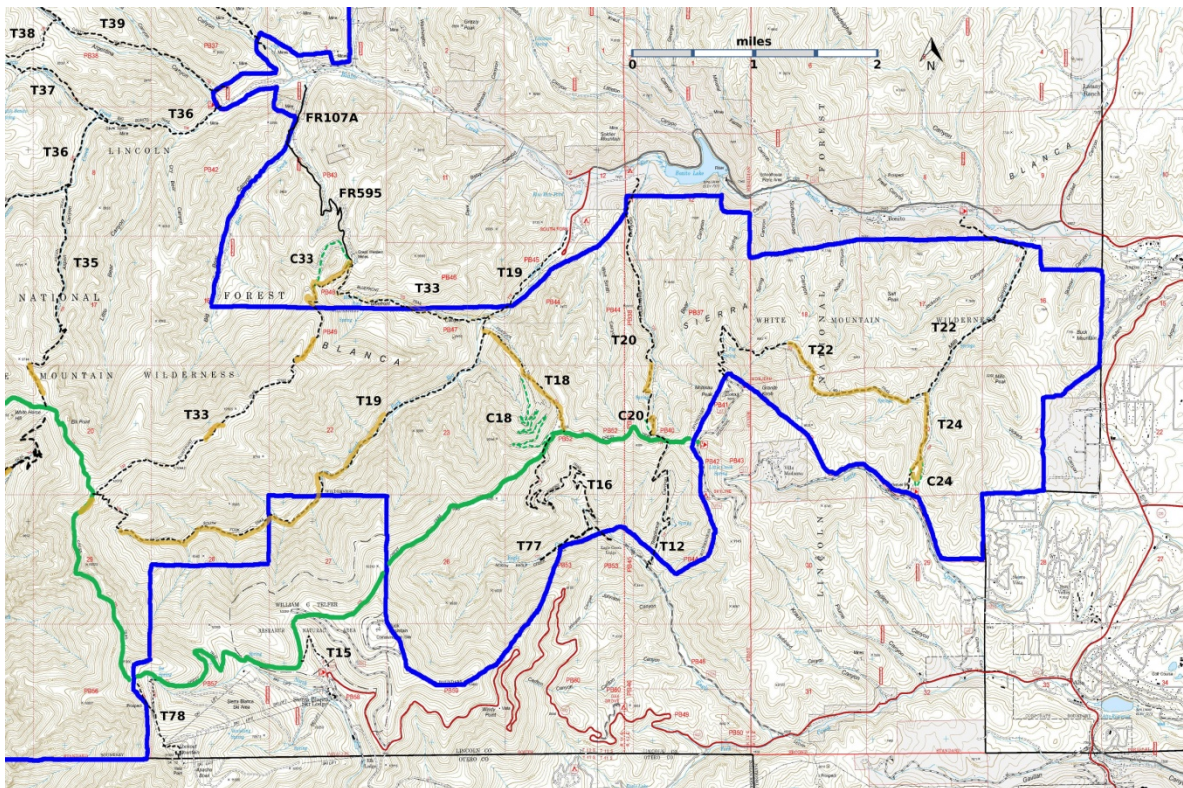
T15

GPS Track (as .GPX)

Left click to open in your browser; then save from browser.

LENGTH	ELEVATION	DIFFICULTY	SCENERY
0.6 miles	9840 - 10180 ft 340 ft difference	Difficult	3

Allowed Usage				



[Link to map color/symbol codes](#)

T12, T15, T16, T18, T19, T20, T22, T24, T33, T35. T36 (partial), T37 (partial), T38, T39 (partial), T77, and T78 are shown as black dashed lines on the map. The solid blue line is the border of the White Mountain Wilderness. The solid green line is T25 Crest Trail. Yellow over a trail indicates that that portion of the trail is intermittent or hard to follow. The map image may

be downloaded through the White Mountain Wilderness link below. The image can then be expanded and/or manipulated at high resolution.

NOTE: T15 is outside the White Mountain Wilderness area.

DESCRIPTION: The trail provides direct access via a fairly easy, steady gradient to the 21.7 mile long T25. Nearby, and within easy access along the route's first 0.3 mile, is an exquisitely beautiful, intermittent mountain stream amid mixed conifers. Here the path also threads through a lovely, wooded corridor of tall mature fir, blended with aspen and spruce. Surroundings include steep lush meadows where vegetation occasionally reaches six feet high, with adequate moisture. From June through September, the area is alive with wildflowers. Along T15, at mile 0.3 from the lower trailhead, the trail's only switchback, going left, could be missed.

ACCESS: To reach the trailhead from Smokey Bear Ranger District Office in Ruidoso, drive NM48 north 4.2 miles to NM532, Ski Run Highway. Turn left and follow paved NM 532 for nearly 12 miles until the signed T15 trailhead is noted on the right at a U-curve going left, just prior to entering the gated Ski Apache Ski Area. After the first 3.2 miles on NM 532, the fairly narrow 2-lane road becomes somewhat steep with many switchbacks. Take advantage of the few pullouts to enjoy outstanding views from the most scenic paved road in Lincoln National Forest!

GPS Coordinates for Key Points

NAD83	Lat/Lon hddd mm ss.s	UTM (13 S)
Junction of T15 and T25	N33 24 01.3 W105 47 36.2	426220 3695954
Lower Trailhead	N33 23 58.3 W105 47 22.1	426583 3695857

Links to Other Resources

[White Mountain Wilderness Trails-p1 \(11 MB\)](#)

[Burned Trails Map \(34 MB\)](#)

[Nogal Topo Map](#)

[WMW Forest Service Resource](#)

[Scenic Trailhead](#) [1996 Information]

Last Hiked: 6/22/16

2/7/2021