

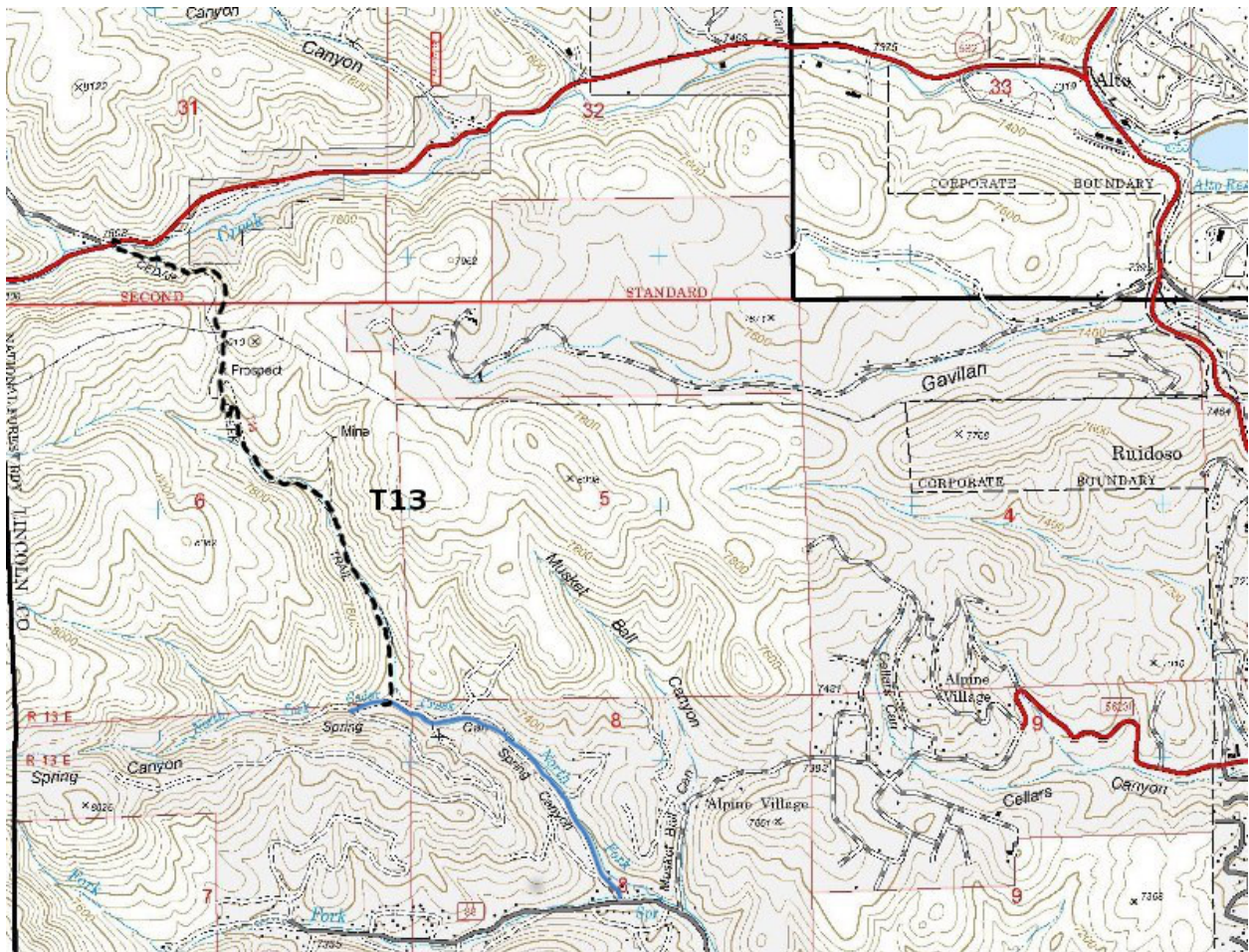
T13
South Cedar Creek Trail
Smokey Bear Ranger District



T13
 GPS Track (as .GPX)
 Left click to open in your browser; then save from browser.

LENGTH	ELEVATION	DIFFICULTY	SCENERY
1.7 miles	7360 -7970 ft 610 ft difference	Moderate	2

Allowed Usage				



[Link to map color/symbol codes](#)

T13 is shown as a black dashed line on the map.

DESCRIPTION: T13 is away from the developed portions of Ruidoso. Beginning at its lower, southern trailhead, the path follows a small, intermittent stream for the first 0.8 mile. At mile 0.5 from the trailhead, the official route makes a left turn at a trail junction; an unofficial path continues straight ahead into a narrow canyon with several closed mine entrances. After the left turn, T 13 eventually crosses a ridge and power line maintenance road at mile 1.2. The path is easy to follow and passes, in part, through a forest of white fir and southwestern white pine. Trail gradient is no higher than 25%, usually much lower.

ACCESS: The southern T13 trailhead is reached from the intersection of Mechem Drive (NM48) and Cedar Creek Road (FR88) the location of Smokey Bear Ranger District Office in Ruidoso, by driving Cedar Creek Road 2.0 miles to the signed Spring Canyon Road. Turn right and follow the graveled road for 0.8 mile to the signed Cedar Creek Trailhead on the right. Parking is available about 300 ft further along Spring Canyon Road.

The northern T13 trailhead is reached from Smokey Bear Ranger District Office by driving Mechem Drive (NM48) 4.2 miles north to the junction with NM532, Ski Run Highway. Turn left and drive paved NM532 for 2.5 miles to the junction of FR127, Eagle Creek Road, on the right. The somewhat hidden, signed T13 trailhead is across NM532 from the beginning of FR127.

DISTANCE AND ALTITUDE: From the southern trailhead (7360 ft) the trail ascends 510 ft in 1.2 miles (8% gradient) to the ridge (7970 ft). It then descends 350 ft in 0.5 miles (13% gradient) to the northern trailhead (7620 ft).

GPS Coordinates for Key Points

NAD83	Lat/Lon hddd mm ss.s	UTM (13 S)
North Trailhead	N33 22 38.2 W105 42 37.1	432793 3695034
South Trailhead	N33 22 35.7 W105 42 36.9	433934 3693261

Links to Other Resources

[Ruidoso Area Trails Map](#)

[Forest Service Resource](#)

Last Hiked: 10/20/2013

2/7/2017