

# T121

## Lower Jerryatrics Trail

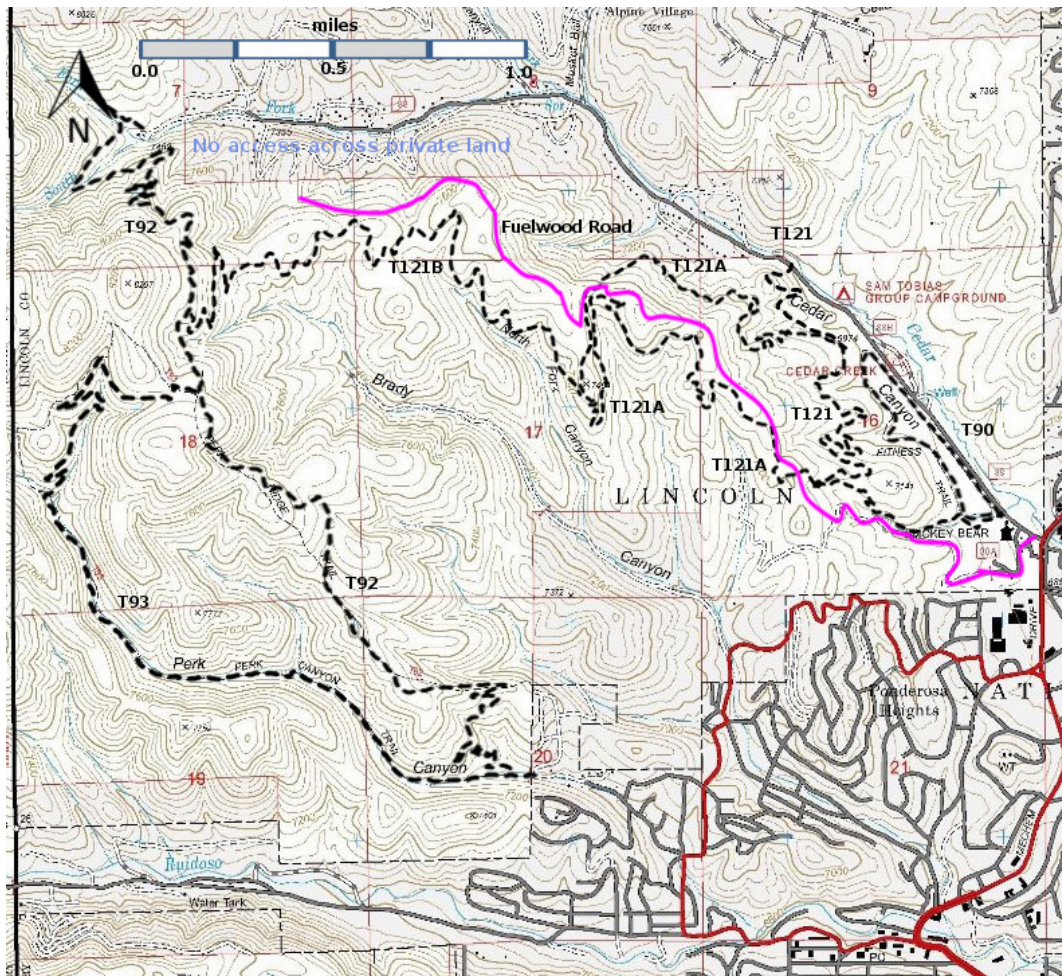
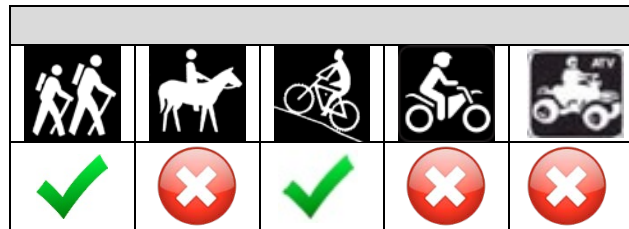
### Smokey Bear Ranger District



**T121**  
GPS Track (as .GPX)

Left click to open in your browser; then save from browser.

LENGTH	ELEVATION	DIFFICULTY	SCENERY
2.1 miles	6895 -7146 ft 250 ft difference	Moderate	2



[Link to map color/symbol codes](#)

T90, T92, T93, T121, T121A, and T121B are shown as black dashed lines on the map. There is no access across private land to Cedar Creek Road.

**DESCRIPTION:** T121 Lower Jeryatrics Trail provides a serpentine, low-gradient trail – popular with mountain bikers – that is easily accessible in Ruidoso. It begins just off Cedar Creek Road at the Fitness Trail parking lot and, with multiple switchbacks, ascends through canyons with very nice stands of Ponderosa pines. The elevation gain is about 250 feet. As one reaches the upper part of the trail there are nice views of Ruidoso and Sierra Blanca. T121 ends on Cedar Creek road just across from the Sam Tobias campground.

**ACCESS:** To access the south trailhead, begin at the intersection of NM48 (Mechem Drive) and Cedar Creek Road (FR88), the location of the Smokey Bear Ranger District office in Ruidoso. Drive 0.2 miles along Cedar Creek Road to a parking lot on the left. Trail T90 Fitness Trail also starts at this parking lot. T121 begins at the left side of the parking lot – SE corner.

You may want to spend some time at the hiker kiosk at the start of T90. There is a nice map showing the trails in the area.

To access the north trailhead, from the intersection of Mechem Drive (NM48) and Cedar Creek Road (FR88) drive along Cedar Creek Road 1.0 miles to the northwestern end of the Sam Tobias campground. The trailhead for T121A is just across Cedar Creek Road, near an orange-white striped sign. There is some parking near the entrance to the campground, but be sure not to block the entrance.

**GPS Coordinates for Key Points**

NAD83	Lat/Lon hddd mm ss.s	UTM (13 S)
South Trailhead Cedar Creek Road	N33 21 06.9 W105 40 38.9	436966 3690505
South Junction of T121 and T121A	N33 21 30.8 W105 41 06.8	436248 3691246
South Junction of T121 and T121A	N33 21 10.5 W105 41 12.2	436106 3690624
North Trailhead Cedar Creek Road	N33 21 39.7 W105 41 11.4	436133 3691522

**Links to Other Resources**

[Full Topo Map](#)

Last Hiked: 10/8/2018

1/19/2019