

T121B

Jerryatrics-Perk Crossover Trail

Smokey Bear Ranger District

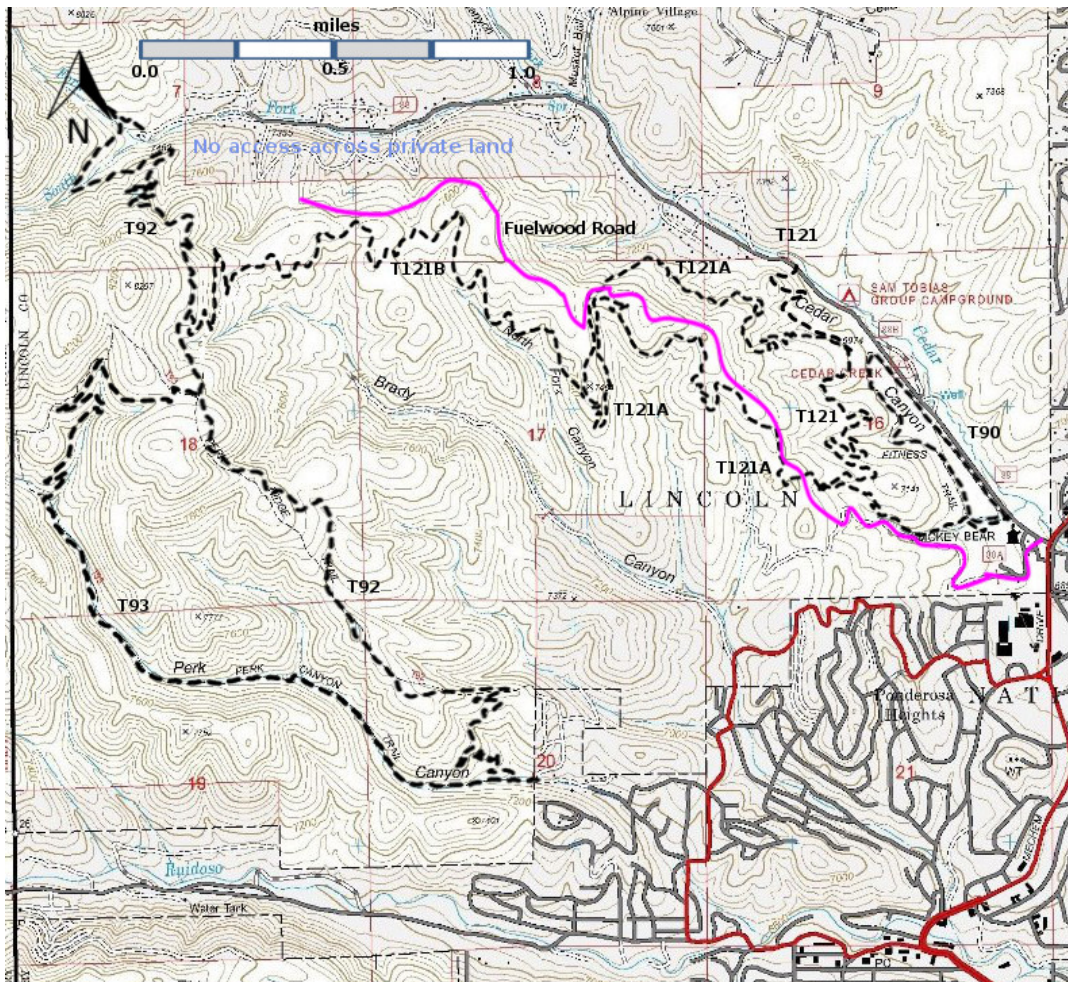
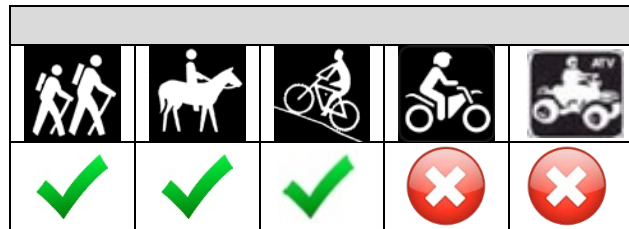


T121B

GPS Track (as .GPX)

Left click to open in your browser; then save from browser.

LENGTH	ELEVATION	DIFFICULTY	SCENERY
2.2 miles	7440 -7940 ft 500 ft difference	Moderate	3



[Link to map color/symbol codes](#)

T90, T92, T93, T121, T121A, and T121B are shown as black dashed lines on the map.

NOTE: The old T121B has been incorporated into the current T121A. .

DESCRIPTION: T121B connects T121A to T92. It is a new trail designed for cyclists. It passes through mature ponderosa and fir forests.

ACCESS: It is not possible to drive to either trailhead.

To access the west (upper) trailhead, Start at the north trailhead of T92 and hike 1.9 miles to its junction with T121B. To access the east (lower) trailhead, start at the north end of T120, hike 0.3 miles to its junction with T121A, and then hike along T121A for 1.5 miles to its junction with T121B.

GPS Coordinates for Key Points

NAD83	Lat/Lon hddd mm ss.s	UTM (13 S)
Junction of T121A and T121B	N33 21 29.8 W105 41 52.4	435070 3691223
Junction of T121B and T92	N33 21 38.2 W105 43 03.6	433233 3691494

Links to Other Resources

[Full Topo Map](#)

Last Hiked: 10/8/2018

1/19/2019