

T121A

Upper Jerryatrics Trail

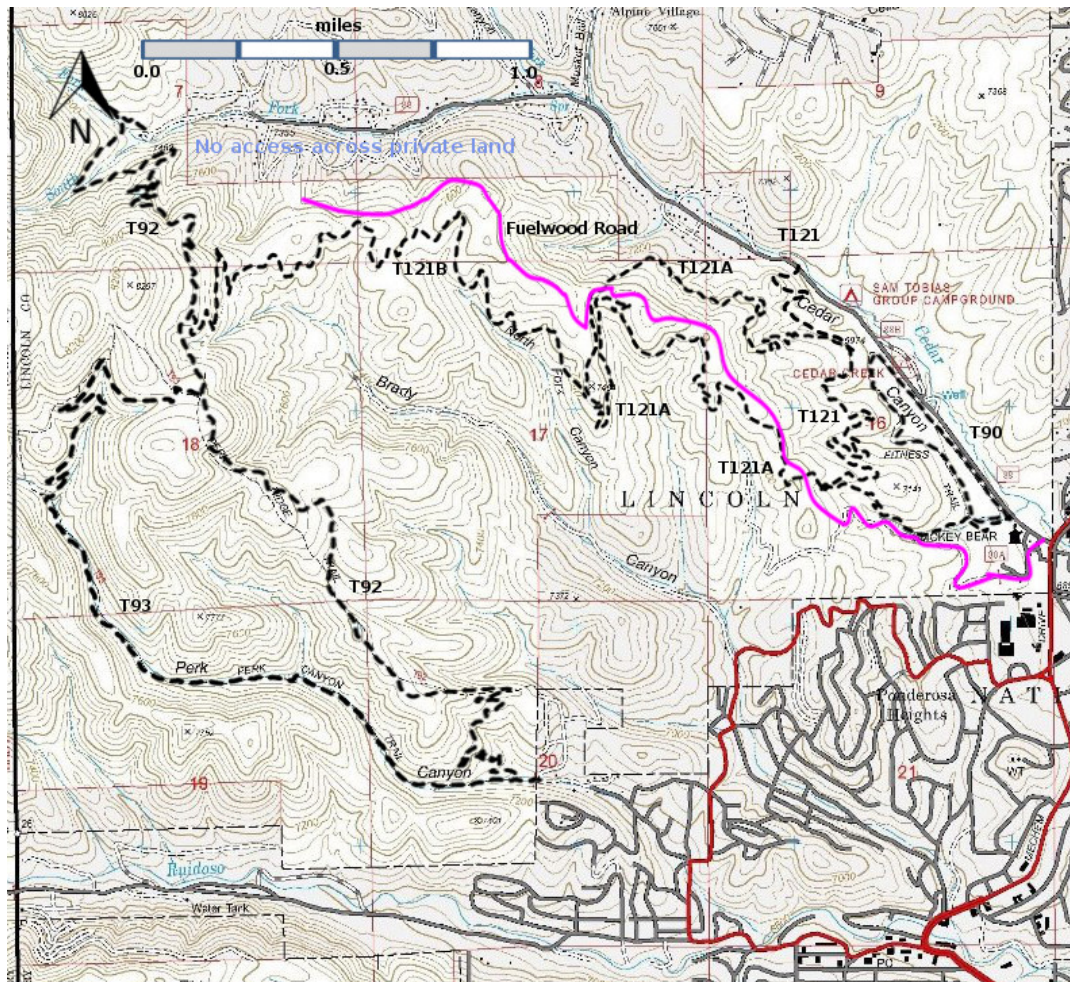
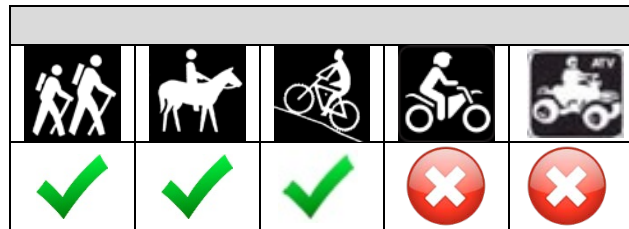
Smokey Bear Ranger District



T121A
GPS Track (as .GPX)

Left click to open in your browser; then save from browser.

LENGTH	ELEVATION	DIFFICULTY	SCENERY
3.6 miles	7130 - 7210 ft 80 ft difference	Easy	2



[Link to map color/symbol codes](#)

T90, T92, T93, T121, T121A, and T121B are shown as black dashed lines on the map.

NOTE: The former T121A, a 0.3 mile connector trail, has been incorporated into T120. T121A is now a long bicycle trail connecting to T120 at two points.

DESCRIPTION: T121A connects to T120 near its northern end, climbs toward a ridge, loops around the ridge, and switchbacks downhill to connect with T120 near its southern end. It is a well-constructed trail and will be attractive to cyclists. The forest and views are similar to those for T120.

ACCESS: T120 can be accessed from T120 in two ways: (1) Start at T120 at its southern end and hike 0.7 miles to its junction with the southern end of T121A, or (2) Start at T120 at its northern end and hike 0.3 miles to its junction with the northern end of T21A.

GPS Coordinates for Key Points

NAD83	Lat/Lon hddd mm ss.s	UTM (13 S)
Junction of T121 and north end of T121A	N33 21 30.8 W105 41 06.8	436248 3691246
Junction of T121A and T121B	N33 21 29.8 W105 41 52.4	435070 3691223
Junction of T121 and south end of T121A	N33 21 10.5 W105 41 12.2	436106 3690624

Links to Other Resources

[Full Topo Map](#)

Last Hiked: 9/6/2018

1/19/2019