

# T120F

## Downhill Bike Trail

Bicycles only

**Smokey Bear Ranger District**

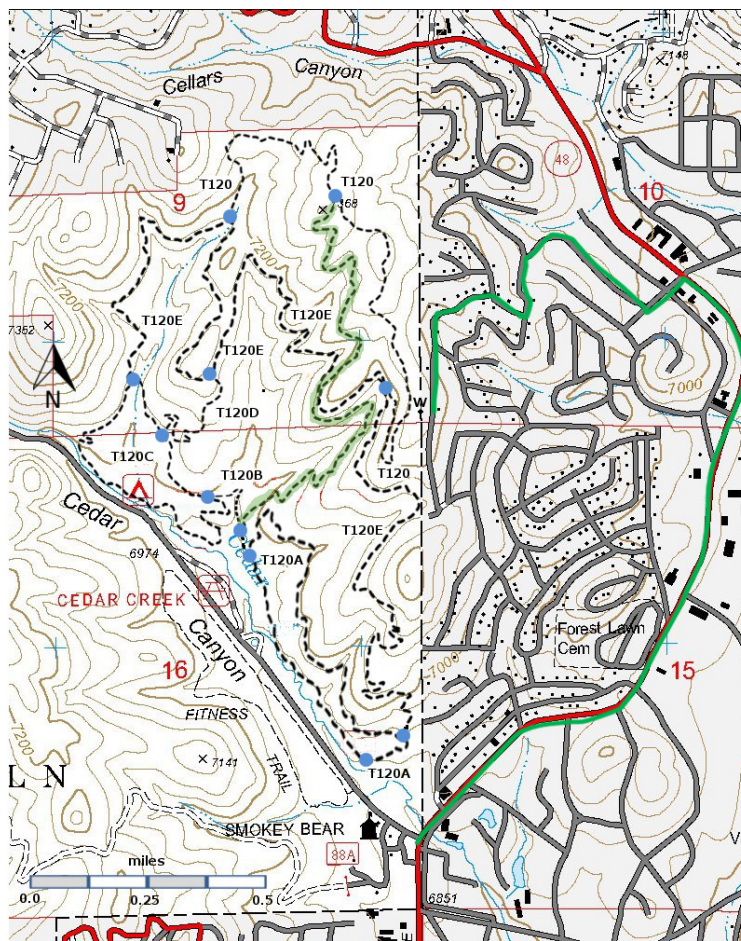
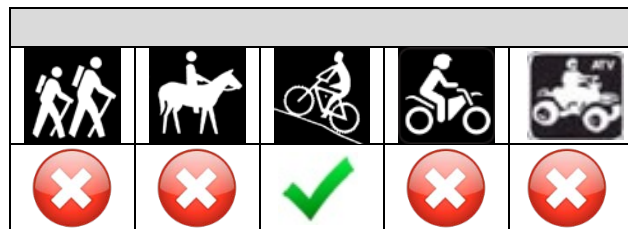


### T120F

GPS Track (as .GPX)

Left click to open in your browser; then save from browser.

LENGTH	ELEVATION	DIFFICULTY	SCENERY
1.3 miles	6960 ft – 7350 ft 390 ft difference	Moderate	3



[Link to map color/symbol codes.](#)

T120, T120A, T120B, T120C, T120D, and T120E are shown as black dashed lines on the map. T120F (bicycles only) is shown as a black dashed line overlain with green.

**WARNING: Safety Matters! Bicycles will come down T120F at high speed. Hikers on this trail can cause accidents in which they and the cyclists are injured. Be smart and leave this trail to bicycles only.**

**NOTE:** The reconstruction of the trails north of Cedar Creek Road is now complete. These trails were formerly known as the Spaghetti Bowl trails. All of the T120 trails are on the north side of Cedar Creek Road with Mechem Drive on the east and the Sam Tobias Campground on the southwest. The maximum elevation change is about 500 feet, from Cedar Creek Road to the top of the ridge. The trails are designed for bicycles – 3-4 feet wide with low gradients.

Drop by the Smokey Bear Ranger District office at Mechem and Cedar Creek Road for a nice map of the Cedar Creek trails. GPS coordinates for the Cedar Creek trail junctions are given in the T120 web page.

**DESCRIPTION:** T120F was designed and built to provide exhilarating rides to bicyclists. It has many steeply banked sharp curves as well as jump ramps. Forget about the views; all attention should be on navigating the trail challenges safely.

T120F crosses T120E. Signs advise cyclists to slow down when approaching this intersection, but it is wise to have this intersection in mind before starting downhill.

**ACCESS:**

From T120 (upper end), T120E (middle), or T120B (lower end)

**Links to Other Resources**

[Full Topo Map](#)

Last Hiked: 10/13/2018

1/21/2019