

T120E

Upper Cedar Creek Trail

Smokey Bear Ranger District

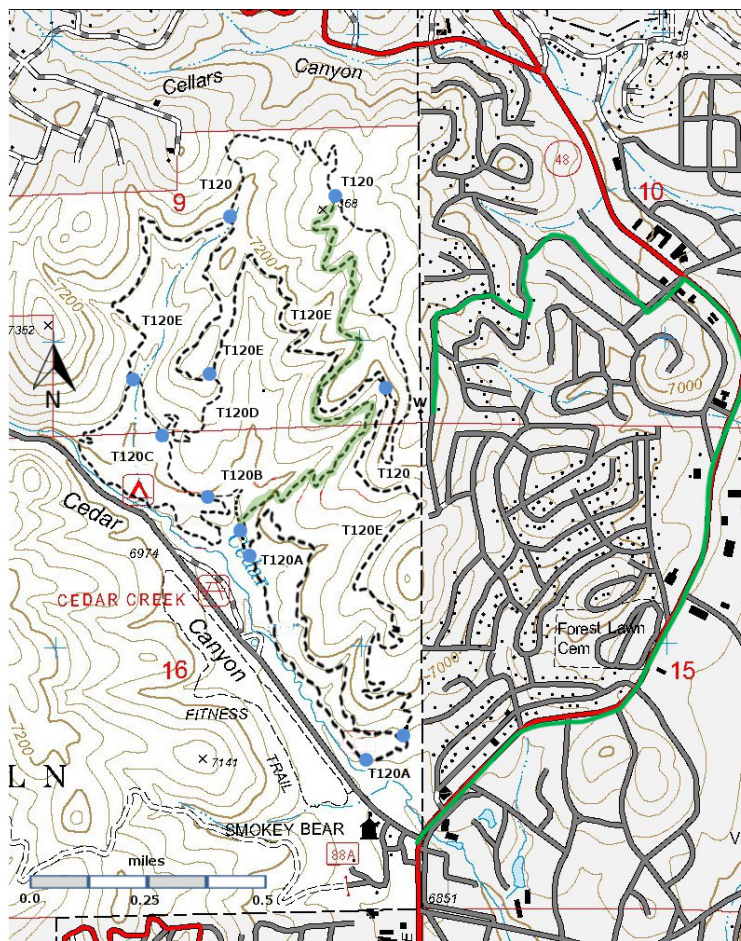
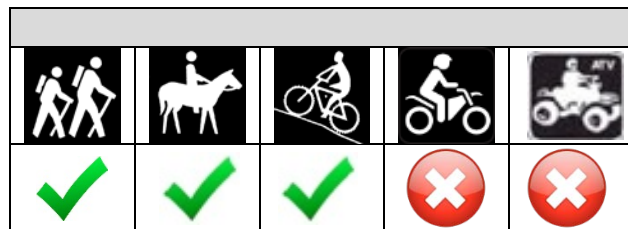


T120E

GPS Track (as .GPX)

Left click to open in your browser; then save from browser.

LENGTH	ELEVATION	DIFFICULTY	SCENERY
3.4 miles	6910 ft – 7190 ft 280 ft difference	Moderate	3



[Link to map color/symbol codes.](#)

T120, T120A, T120B, T120C, T120D, and T120E are shown as black dashed lines on the map. T120F (bicycles only) is shown as a black dashed line overlain with green.

Warning!. T120F Downhill Bike trail crosses T120E. There are signs before this intersection on both T120E and T120F, but – just like yur mother told you – you should stop, look, and listen before entering the intersection

NOTE: The reconstruction of the trails north of Cedar Creek Road is now complete. These trails were formerly known as the Spaghetti Bowl trails. All of the T120 trails are on the north side of Cedar Creek Road with Mecham Drive on the east and the Sam Tobias Campground on the southwest. The maximum elevation change is about 500 feet, from Cedar Creek Road to the top of the ridge. The trails are designed for bicycles – 3-4 feet wide with low gradients.

Drop by the Smokey Bear Ranger District office at Mechan and Cedar Creek Road for a nice map of the Cedar Creek trails. GPS coordinates for the Cedar Creek trail junctions are given in the T120 web page.

DESCRIPTION: T120E is a nice long trail, halfway up to the ridge. There are some distant views.

ACCESS:

From T120A or T120C, and from the water tower (W)

Links to Other Resources

[Full Topo Map](#)

Last Hiked: 10/13/2018

1/21/2019