

T120D

Upper Cut Trail

Smokey Bear Ranger District



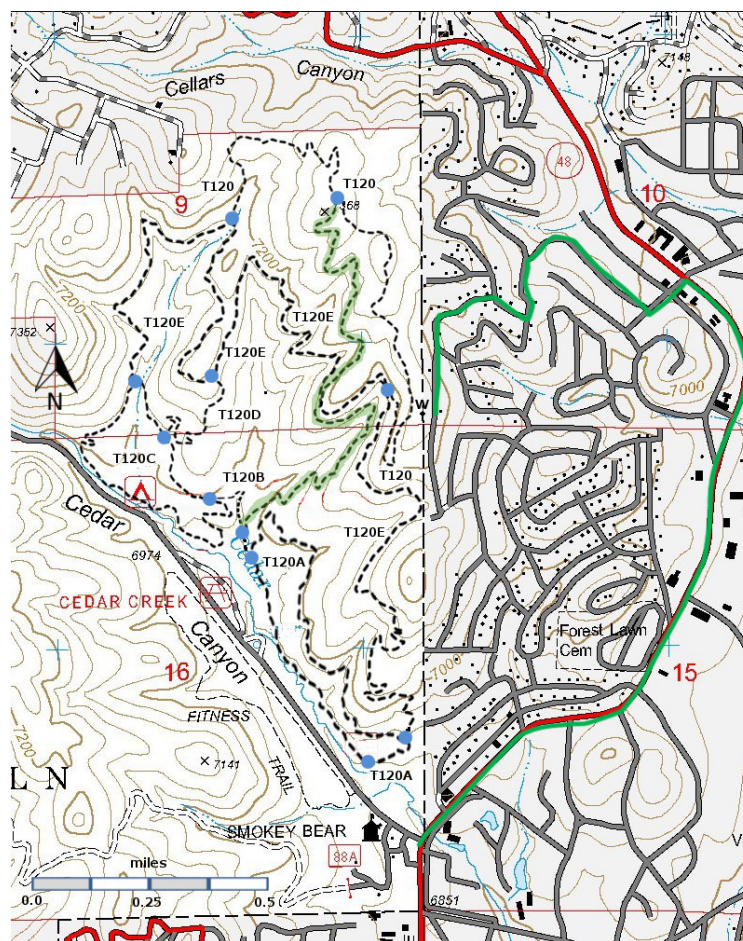
T120C

GPS Track (as .GPX)

Left click to open in your browser; then save from browser.

LENGTH	ELEVATION	DIFFICULTY	SCENERY
0.4 miles	7010 ft -7120 ft 110 ft difference	Moderate	1

✓	✓	✓	✗	✗



[Link to map color/symbol codes.](#)

T120, T120A, T120B, T120C, T120D, and T120E are shown as black dashed lines on the map. T120F (bicycles only) is shown as a black dashed line overlain with green.

NOTE: The reconstruction of the trails north of Cedar Creek Road is now complete. Trails in this area were formerly known as the Spaghetti Bowl trails. All of the T120 trails are on the north side of Cedar Creek Road with Mecham Drive on the east and the Sam Tobias Campground on the southwest. The maximum elevation change is about 500 feet, from Cedar Creek Road to the top of the ridge. The trails are designed for bicycles – 3-4 feet wide with low gradients.

Drop by the Smokey Bear Ranger District office at Mechan and Cedar Creek Road for a nice map of the Cedar Creek trails. GPS coordinates for the Cedar Creek trail junctions are given in the T120 web page.

DESCRIPTION: T120D provides a connection between the low trails (T1120A, T120B, and T120C) and the upper trails (T120, T120E, and T120F)

ACCESS:

From T120 B and T120E

Links to Other Resources

[Full Topo Map](#)

Last Hiked: 10/13/2018

1/21/2019