

# T120A

## Lower Cedar Creek Trail

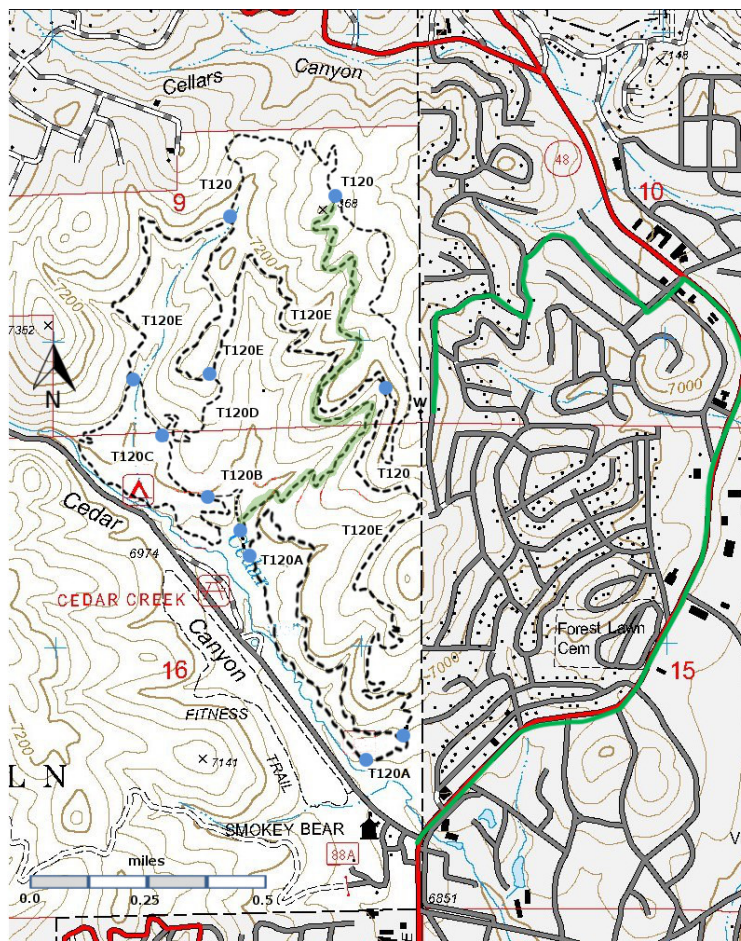
### Smokey Bear Ranger District



**T120A**  
GPS Track (as .GPX)

Left click to open in your browser; then save from browser.

LENGTH	ELEVATION	DIFFICULTY	SCENERY
1.5 miles	6860 -6950 ft 90 ft difference	Easy	2

[Link to map color/symbol codes.](#)

T120, T120A, T120B, T120C, T120D, and T120E are shown as black dashed lines on the map. T120F (bicycles only) is shown as a black dashed line overlain with green.

**NOTE:** The reconstruction of the trails north of Cedar Creek Road is now complete. These trails were formerly known as the Spaghetti Bowl trails. All of the T120 trails are on the north side of Cedar Creek Road with Mechem Drive on the east and the Sam Tobias Campground on the southwest. The maximum elevation change is about 500 feet, from Cedar Creek Road to the top of the ridge. The trails are designed for bicycles – 3-4 feet wide with low gradients.

Drop by the Smokey Bear Ranger District office at Mechem and Cedar Creek Road for a nice map of the Cedar Creek trails. GPS coordinates for the Cedar Creek trail junctions are given in the T120 web page.

**DESCRIPTION:** T120A is a gentle walk-along-the-edge-of-the-creek loop trail. At many points you can leave the trail and return to the campground or vice versa.

**ACCESS:**

For a prettier hike that makes use of part of T120A, drive along Cedar Creek Road approximately 0.1 miles from the intersection and park in a small parking lot on the north side of Cedar Creek Road. Exit the back of the parking lot and look for the trailhead

**Links to Other Resources**

[Full Topo Map](#)

Last Hiked: 10/13/2018

1/21/2019