

T9652 Long Canyon Trail

Sacramento Ranger District



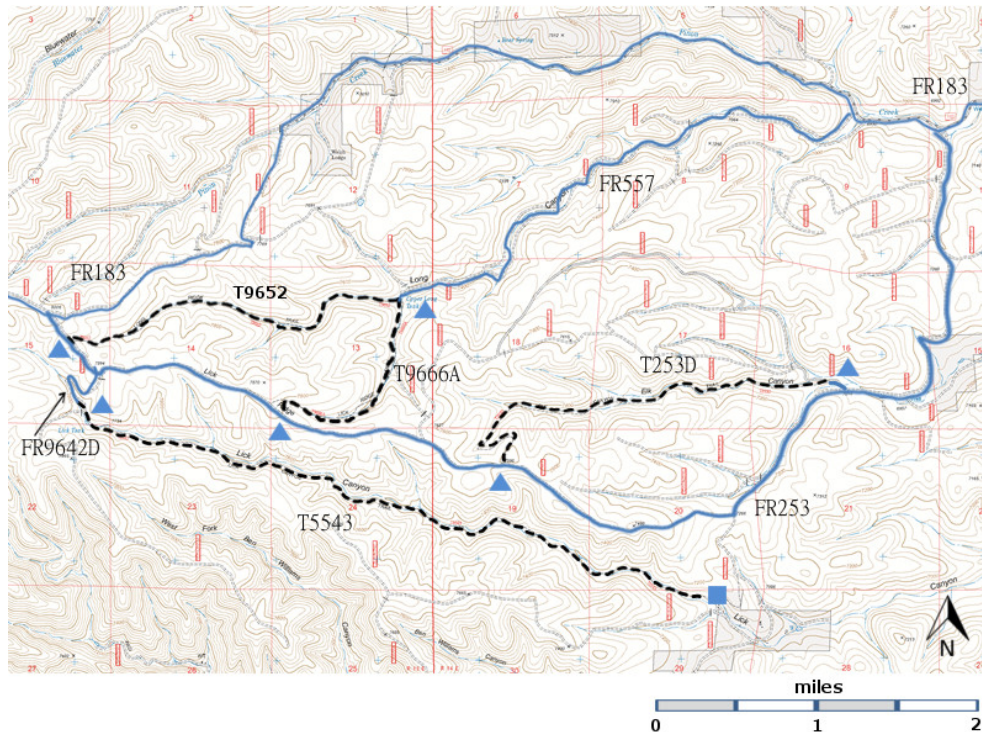
T9652

GPS Track (as .GPX)

Left click to open in your browser; then save from browser.

LENGTH	ELEVATION	DIFFICULTY	SCENERY
2.1 miles See Text	7420 - 7820 ft 400 ft difference	Moderate	2

Allowed Usage				



[Link to map color/symbol codes](#)

T253D, T5543, T9646F, T9652, and T9666A are shown as black dashed lines on the map

DESCRIPTION:T9652 follows an old timber road going up the canyon through pleasant mixed conifer forest. Eventually the road disappears, and the trail continues up the canyon bottom. Near the end of Long Canyon, at about mile 2, there is a cairn made of rocks piled on an old stump. The canyon forks, and the trail is indistinct. Angle to the right, and follow the west side of a draw to a carsonite sign. At that sign,

turn left and follow the old cow path for 75 yards to the trailhead at FR253. T9666A, T9652, and the portion of FR253 connecting their upper trailheads make a nice loop hike.

CAUTION: FR253 can be a really tough drive. There are large rocks and/or ledges. In the wet season it can be soft and muddy. Even when it is dry, there may be deep ruts. In recent years many dead trees have fallen across FR253, and they may block the road.

ACCESS: You may wish to hike more than one trail when you make the drive to the (remote) Piñon Draw area. The write up for T253D contains a table giving distances between the trailheads -- and a table giving trail lengths and altitude changes. The eastern intersection of FR183 and FR253 is 6.0 miles from NM 24.

Lower Trailhead: From the eastern intersection of FR183 and FR253 drive for 0.5 miles along FR183 to the signed intersection with FR557 on the left. Drive FR557 for 3.6 miles and park in the open area near a cattle tank. The well-signed trailhead is just across a small draw. T9666A leaves from the same trailhead.

Upper Trailhead: From the eastern intersection of FR183 and FR253, drive 7.9 miles on FR253 to the signed junction with FR9642D. The signed trailhead for T9652 is approximately 0.2 miles past this junction, along FR253. Hike along the old cow path approximately 75 yards to a carsonsite sign that directs you to turn right and hike down the canyon. The first part of this section of the trail is indistinct. . Look for a cairn made of rocks on an old stump and follow the canyon bottom east. Eventually the poorly defined trail becomes an old road.

Alternate Route: A second route from another direction can reach the upper trailhead, although it includes a road segment that is not passable when wet. Return to the eastern junction of FR183 and FR253. *Zero your trip odometer here.* Continue west along FR 183 to mile 4.3, site of a well-kept former ranger station, now privately owned. The graveled road ends here (end of county maintenance), and a short, rough, often muddy segment begins straight ahead, and continues to about mile 4.5. Stay on FR183 to mile 6.6 at an intersection with FR253 where two large water storage tanks are on the left. In the following paragraphs this point is referred to as the western intersection of FR183 and FR253.. Turn left onto FR253. *Zero your trip odometer again.*

Lower Trailhead: The lower trailhead should be accessed as described in the first set of instructions.

Upper Trailhead: From the western intersection of FR183 and FR253, drive approximately 0.3 miles along FR253 to the4 singed T9652 trailhead. Look for a cairn made of rocks on an old stump and follow the canyon bottom east. Eventually the poorly defined trail becomes an old road.

GPS Coordinates for Key Points

NAD83	Lat/Lon hddd mm ss.s	UTM (13 S)
Upper Trailhead	N32 39 17.0 W105 35 49.5	444007 3613169
Lower Trailhead	N32 39 33.3 W105 33 43.9	447282 3613651

Links to Other Resources

[Link to Full Topo Map](#)

Last Hiked: November 17, 2013

Updated 2/19/2017