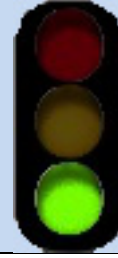


T9646F

Juniper Ridge Trail

Sacramento Ranger District



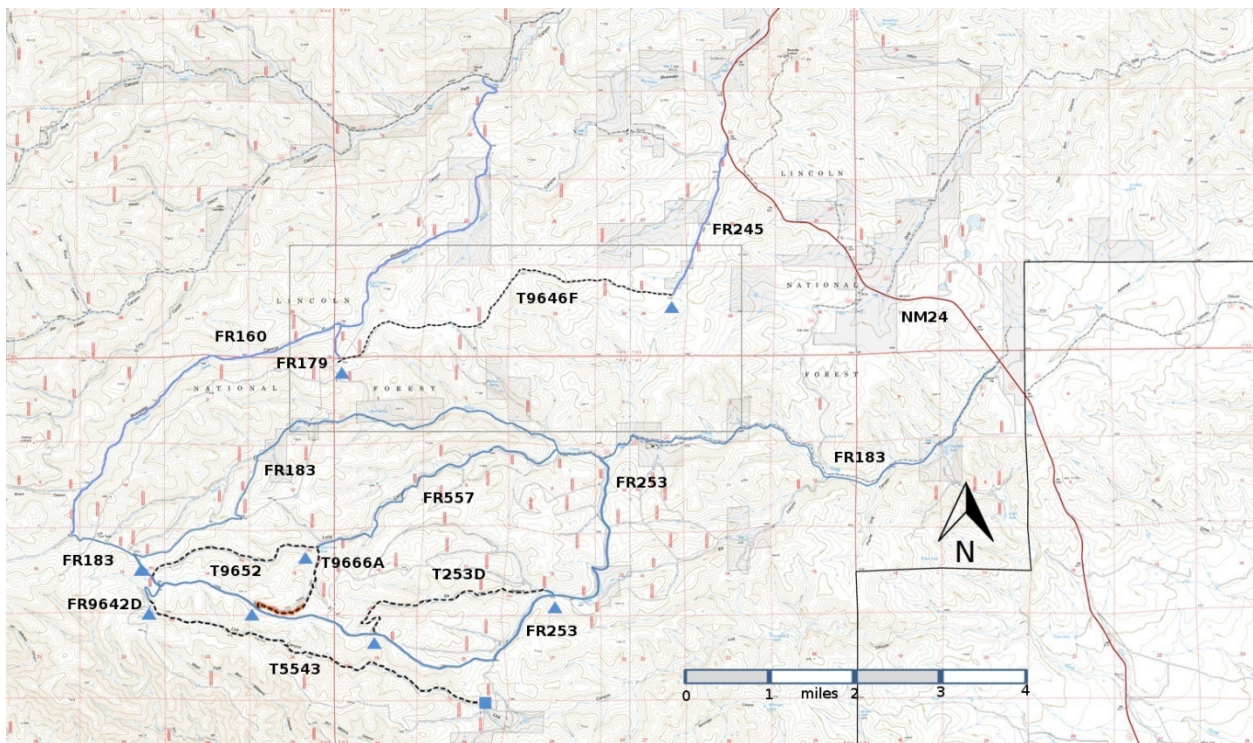
T9646F

GPS Track (as .GPX)

Left click to open in your browser; then save from browser.

LENGTH	ELEVATION	DIFFICULTY	SCENERY
4.6 miles	7180 -7650 ft 470 ft difference	Moderate	1

Allowed Usage				
✓	✓	✓	✓	✓



[Link to map color/symbol codes](#)

T253D, T5543, T9646F, T9652, and T9666A are shown as black dashed lines on the map.

DESCRIPTION: T9646F was FR9646F, a rocky, rough forest road that ran up a ridge for the most part through piñon-juniper woodlands, with few scenic views. The upper 0.5 miles of T9646F runs through ponderosa forest with a soft dirt base. Consider starting at the upper (west) trailhead and hiking this upper portion as an out-and-back picnic hike.

ACCESS: Lower (east) Trailhead: From the intersection of NM24 and Agua Chiquita Road, drive 8.6 miles south on NM24 to FR245. The FR245 sign is a bit hard to find, but there is a large sign for Franco's Lazy dollar Ranch at this junction. Follow FR245 2.0 miles to the T9646F trailhead, which may still have the carsonite sign for FR9646F. About 0.4 miles from NM24, FR9647A branches off from FR245; FR245 is the left fork, two dirt tracks across a meadow. About 0.2 miles further along FR245, the road crosses a small drainage, which when it is wet, is filled with black, slick mud. CAUTION: Even with a four wheel drive vehicle, you will have very little traction in this drainage when it is wet.

Upper (west) Trailhead: From the intersection of NM24 and Agua Chiquita Road, drive 0.5 miles west along Agua Chiquita Road to FR171 (turnoff to Weed). Follow FR171 6.2 miles to its intersection with FR160. Turn left onto FR160 and follow it 4.4 miles to its intersection with FR179 on the left. Follow FR179 for 0.9 miles to the top of the ridge and the upper trailhead for T9646F, which may still be marked with a carsonite sign for FR9646F. The roads along this route are generally good gravel roads. However, in the rainy season the portion of FR160 in Bluewater Canyon may be muddy.

Portions of FR179 are labeled as FR129 on some maps. It seems that FR179 could be used to get from FR160 to FR183, but there is no access across the private property.

GPS Coordinates for Key Points

NAD83	Lat/Lon hddd mm ss.s	UTM (13 S)
Upper Trailhead	N32 42 04.7 W105 29 30.4	447710 3617075
Lower Trailhead	N32 00 00.9 W104 46 35.7	453905 3618280

Links to Other Resources

[Link to Full Topo Map](#)

Last Hiked: 6/26/2015

1/14/2016