

# T9611A

## Prestridge East Trail

### Sacramento Ranger District



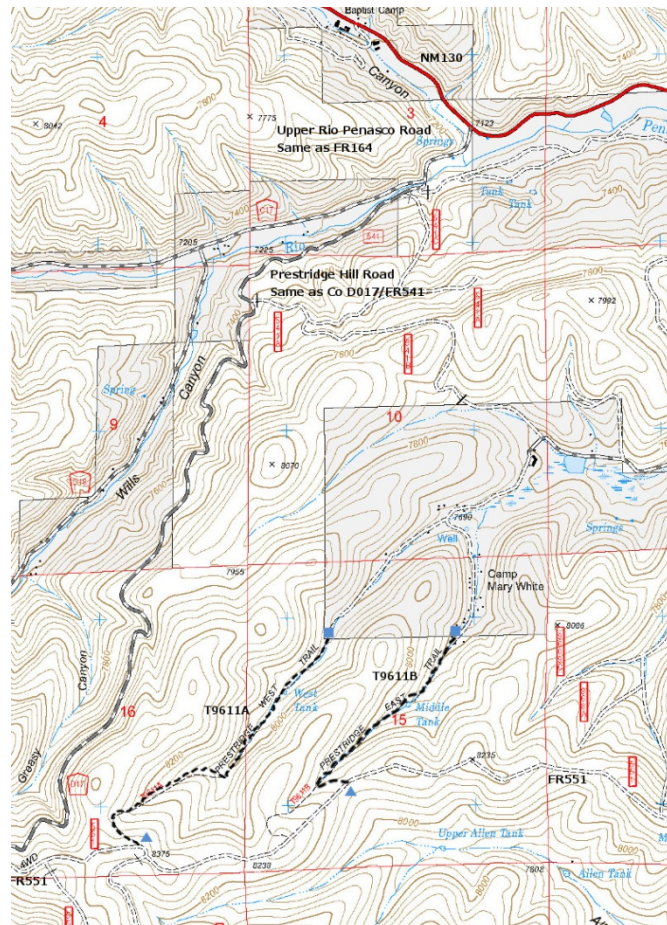
### T9611A

GPS Track (as .GPX)

Left click to open in your browser; then save from browser.

LENGTH	ELEVATION	DIFFICULTY	SCENERY
1.2 miles	7840 8380 ft 540 ft difference	Moderate	2

Allowed Usage				



[Link to map color/symbol codes](#)

T9611A and T9611B are shown as black dashed lines on the map.

**DESCRIPTION:** T9611A was once a road, and it is a nice hike, with an average gradient of about 9%. One descends along the old road, initially through Piñon and scrub oak. The trail continues down canyon through a mixed conifer forest and terminates with no sign at the edge of private property. Hikers should return along the same path. When hiking up from the lower trailhead, one encounters a fork in the trail. Take the left fork, which is the better road.

**ACCESS:** Trailhead: Begin in Cloudcroft at the US82 and NM130 intersection, drive on NM130 south 13 miles to FR164. Turn right onto FR164 (same as Upper Penasco Road) and proceed 0.3 miles to the junction with Prestridge Hill Road. Take the left fork onto Prestridge Hill Road (same as FR541 and County D017) and follow it 3.3 miles to the ridge. FR 551 intersects Prestridge Hill Road at the ridge. Turn left onto FR551 and go 0.4 miles to a green cattle gate; open it, pass through, and close it. Go 0.2 miles further to the upper trailhead for T9611A. FR 551 is rough but passable. T611A intersects FR551 at an acute angle from the left and may not be readily visible. The carsonsite T9611A sign may have fallen down.

The lower end of T9611A is not accessible by road.

#### GPS Coordinates for Key Points

NAD83	Lat/Lon hddd mm ss.s	UTM (13 S)
Trailhead	N32 49 21.5 W105 37 03.0	442200 3631792
Trail End	N32 49 56.9 W105 36 24.4	443209 3632878

#### Links to Other Resources

[Sacramento Topo Map](#)

Last Hiked: August 2013

Updated 1/17/2016